



US-WA-5105 Cle Elum
(T-Mobile SE09034J)

Proposed 150' Monopole

Strictly Private and Confidential

City of Cle Elum

A photograph of a tall, white metal cell tower structure with various antennas and equipment attached, set against a clear sky. The image is partially obscured by a green overlay on the left and a dark grey box at the bottom right.

Enabling Mobile
& Internet
Connectivity

Agenda

Section	Index
1	Project Overview
2	Propagation Maps
3	Photo Simulations
4	Project History & Sites Considered
5	Community Benefits
6	Additional Coverage Maps

Enabling Mobile
& Internet
Connectivity



Project Overview

1

Project Overview



Vertical Bridge is proposing a new 150' unmanned tower facility that will be capable of holding three (3) broadband carriers as well as several smaller wireless internet, E-911 & utility collocations. T-Mobile is slated to be our first tenant to be installed immediately after tower construction. The proposed tower will improve in-building coverage throughout the City of Cle Elum as well as cover traffic along I-90. The site will be located south of 5th Street with access from the west off 5th Street extension. Vertical Bridge intends to install an initial 40'X50' fenced area along the southside of the existing park access trail. Utilities will run underground along the access road. The propose site will have a retaining wall to keep the site level and help with drainage.

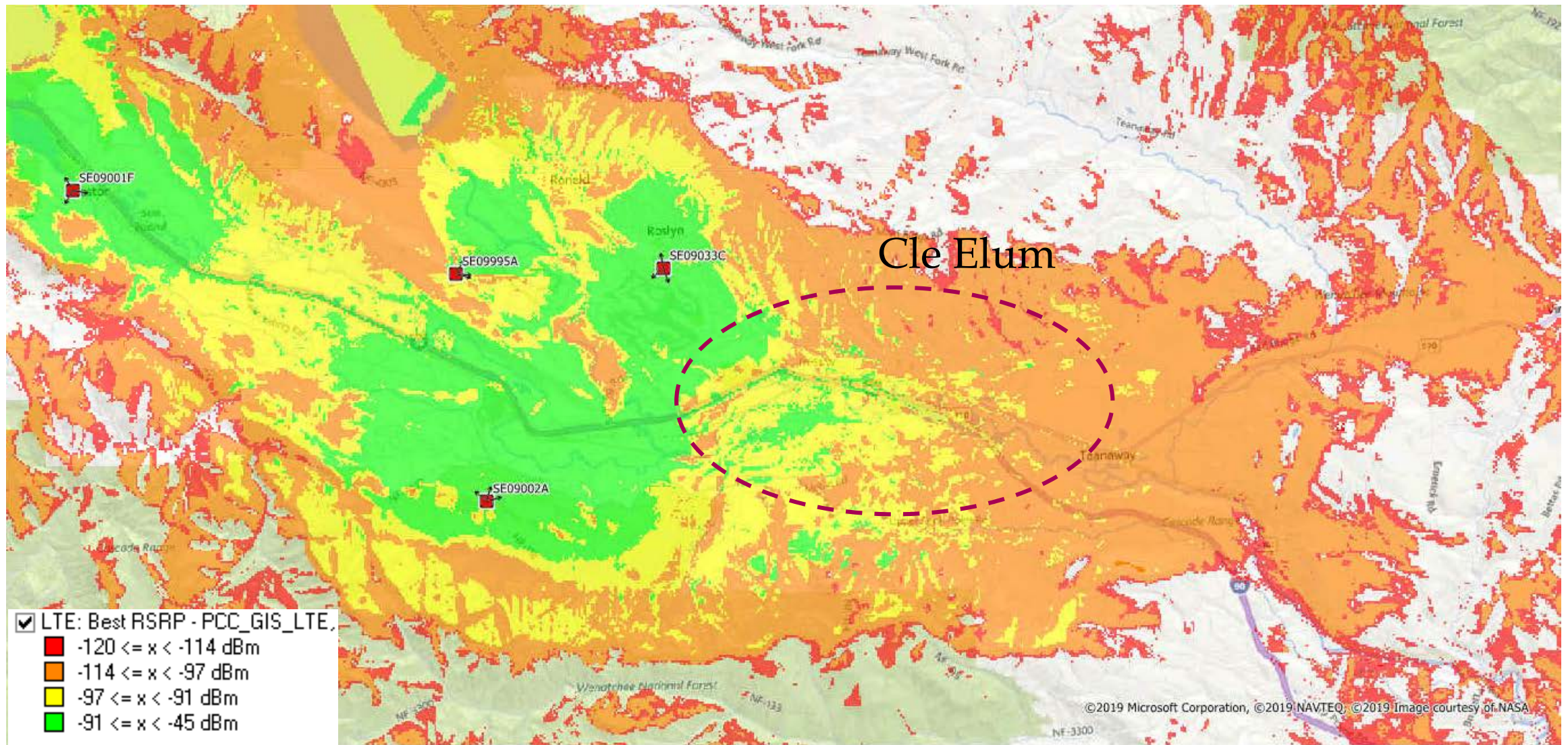
Enabling Mobile
& Internet
Connectivity



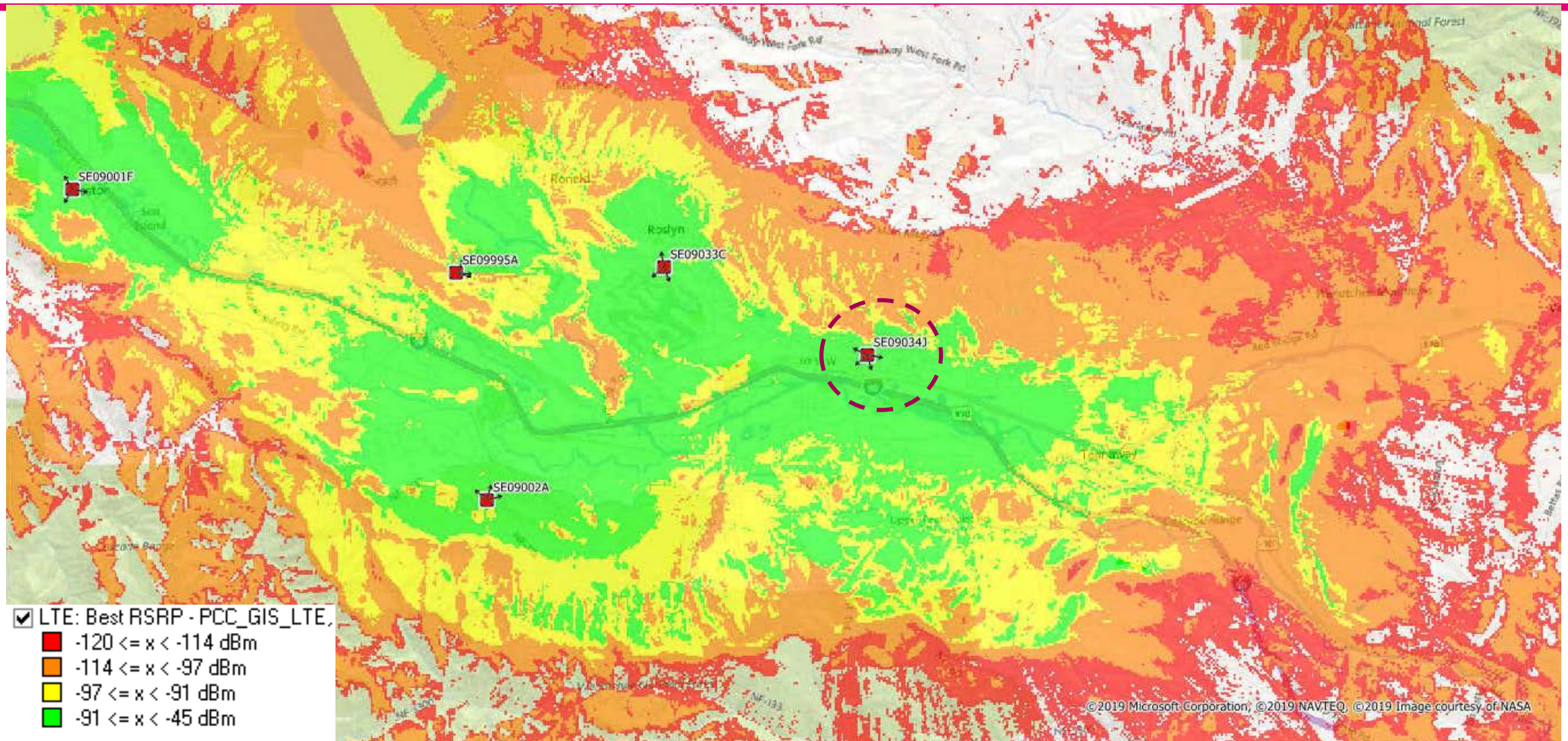
Propagation Maps

2

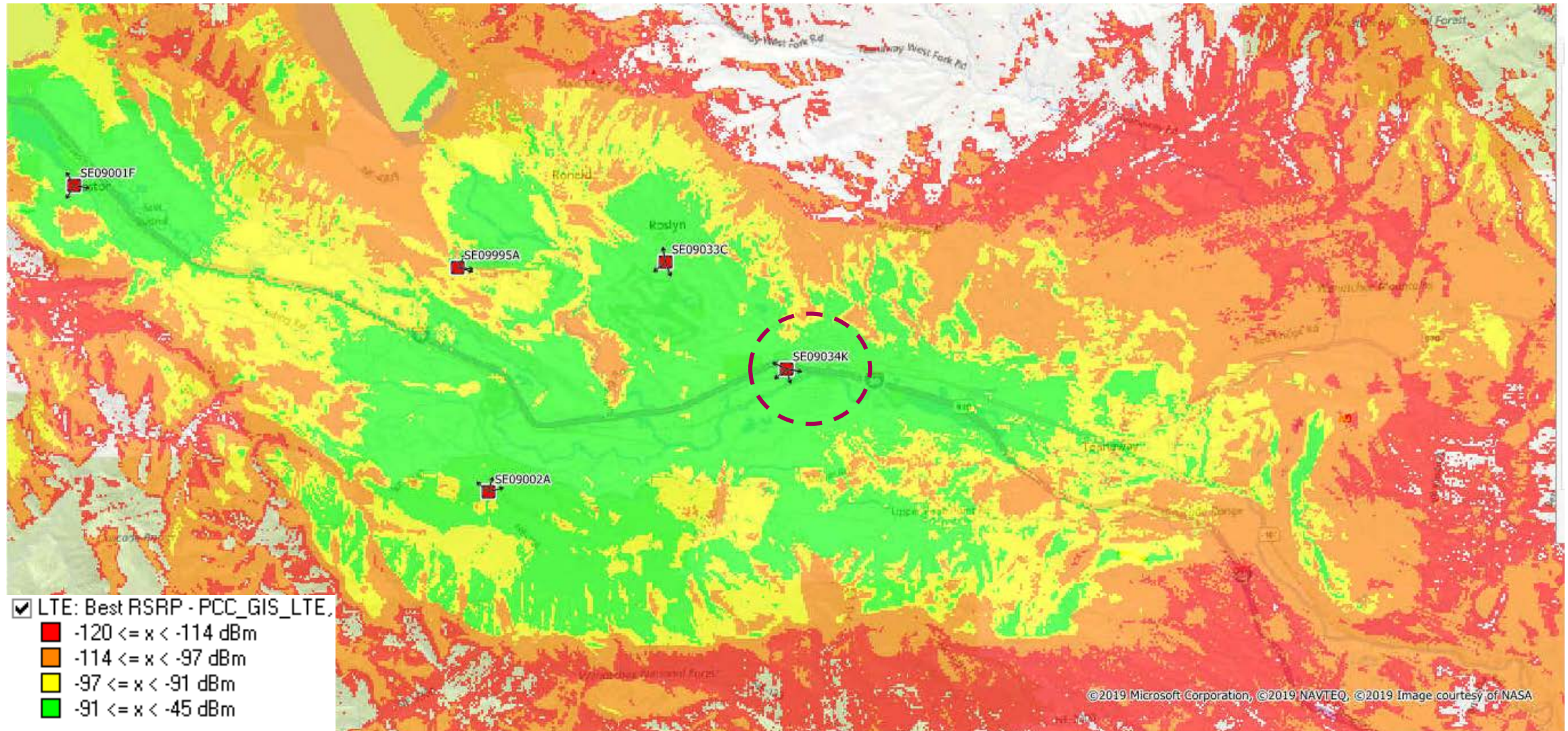
Area LTE coverage without SE09034J (Current Candidate)



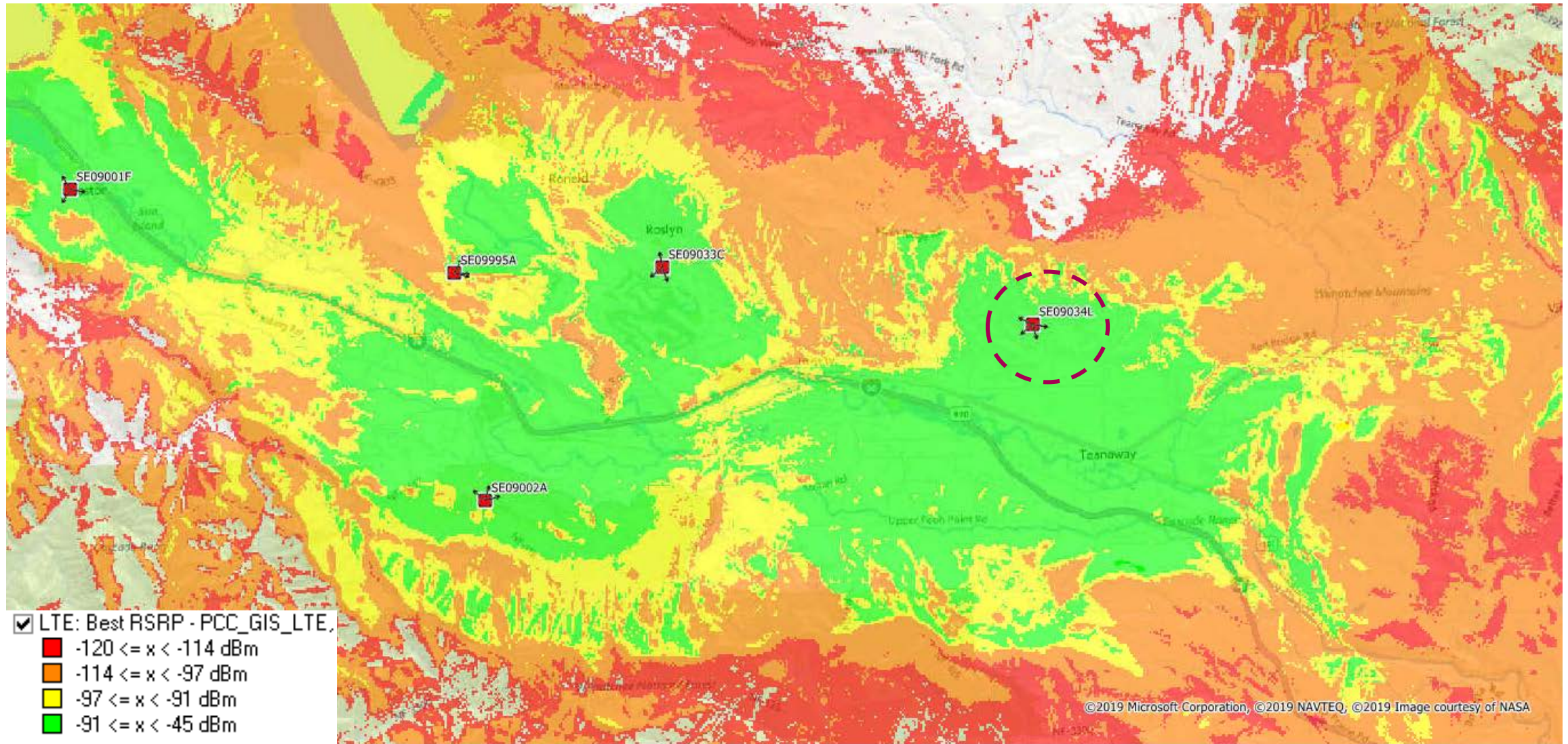
Area LTE coverage with SE09034J (Current Candidate)



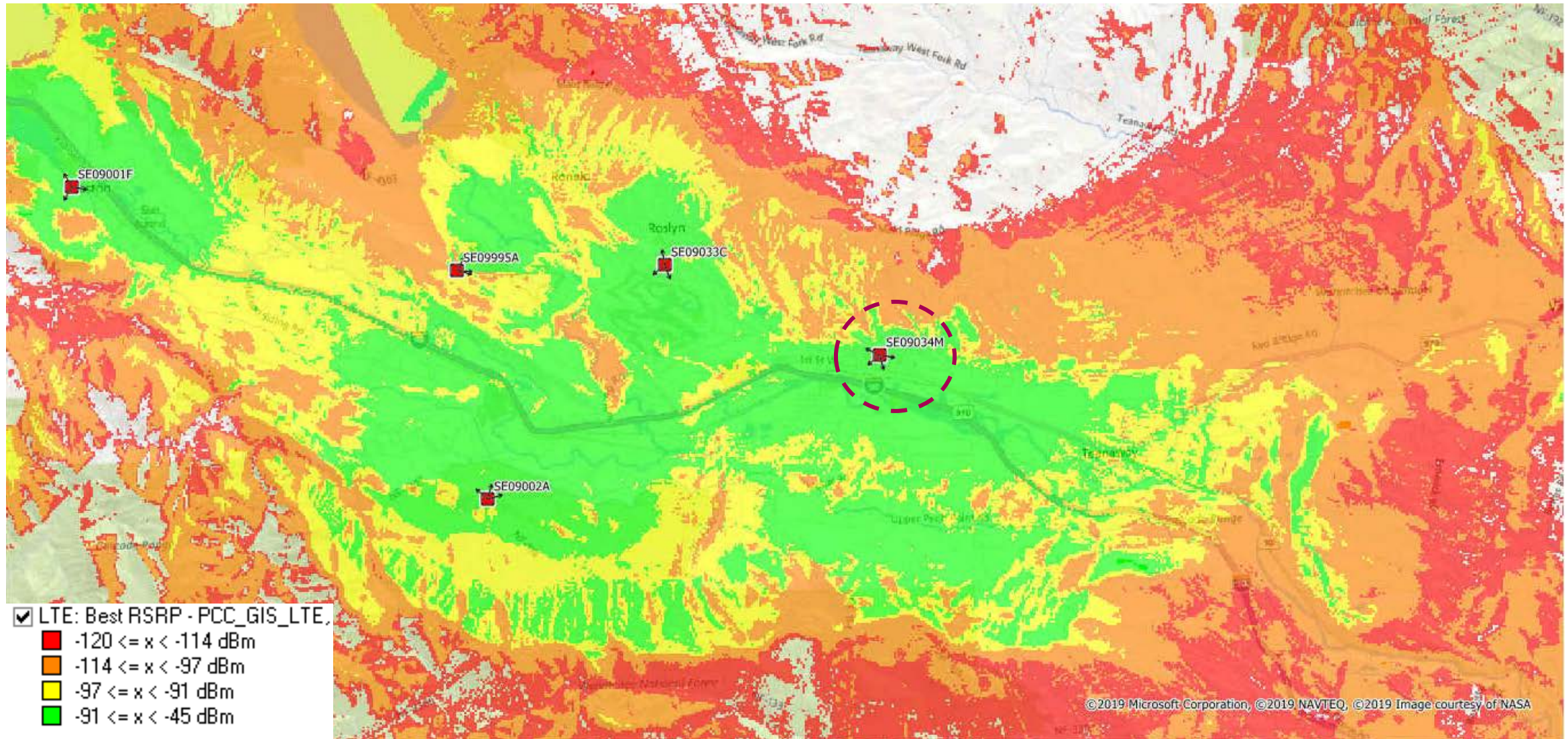
SE09034K- Miller Property



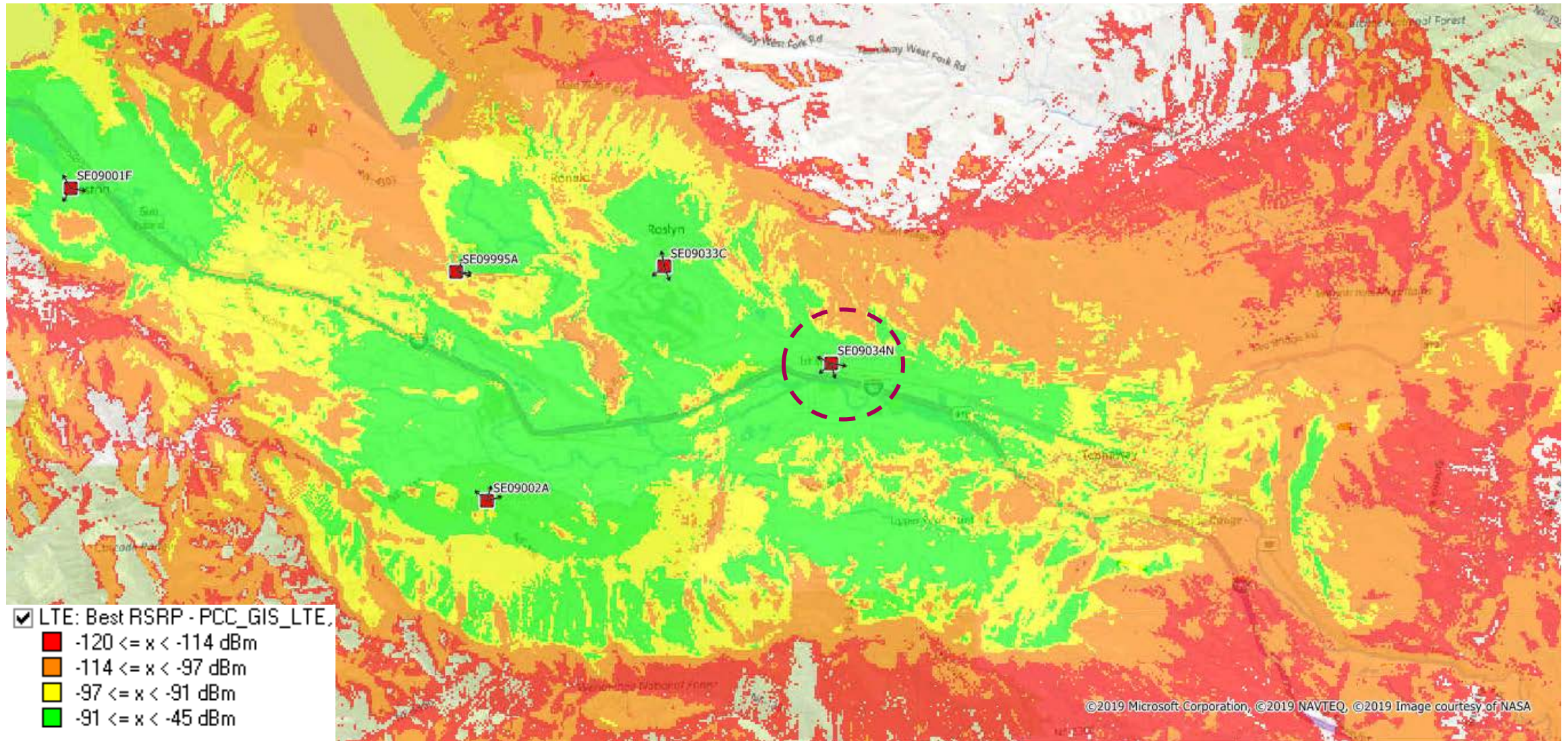
SE09034L - Peppin Property



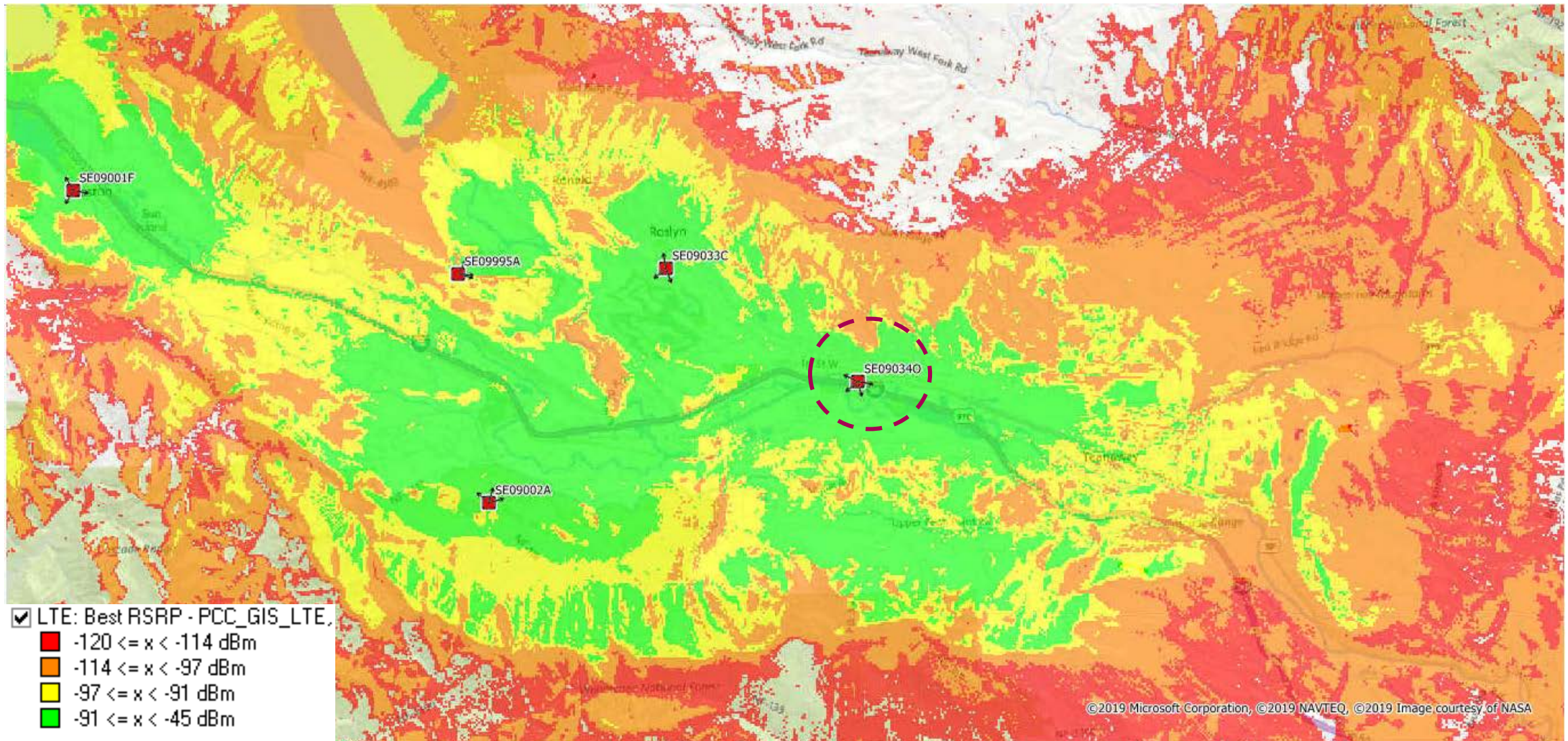
SE09034M - Beell Property



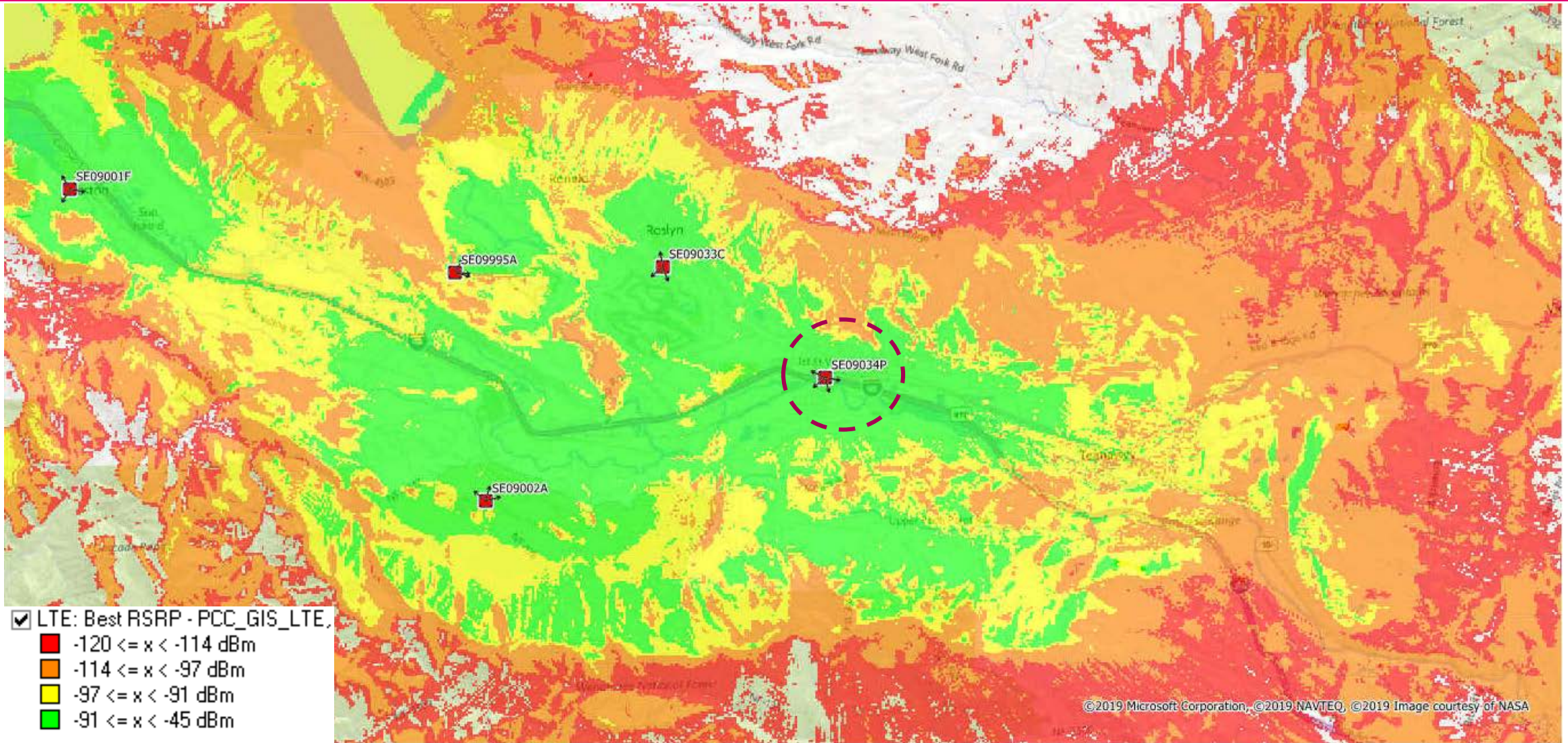
SE09034N - Murray Property



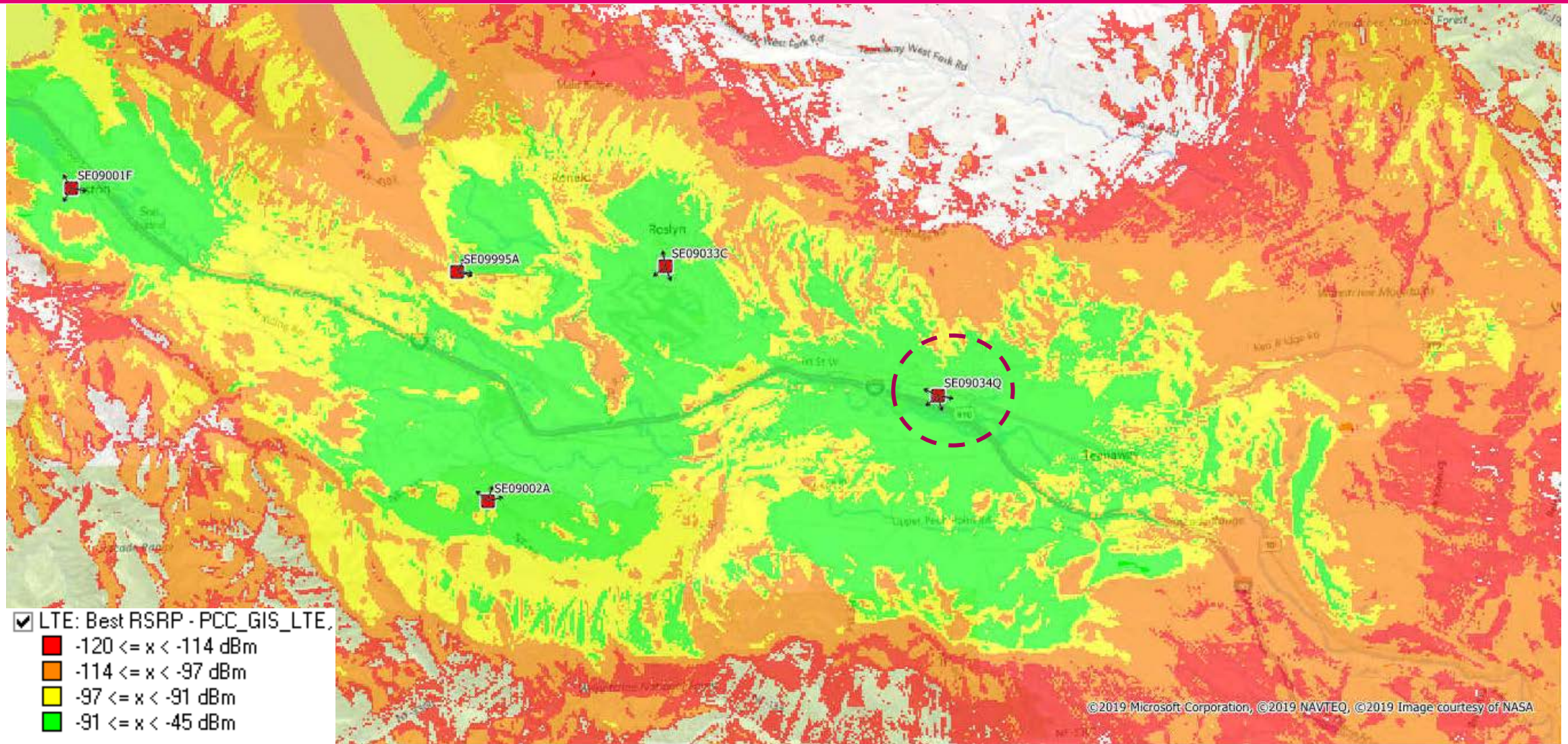
SE090340 - Interchange/Gore



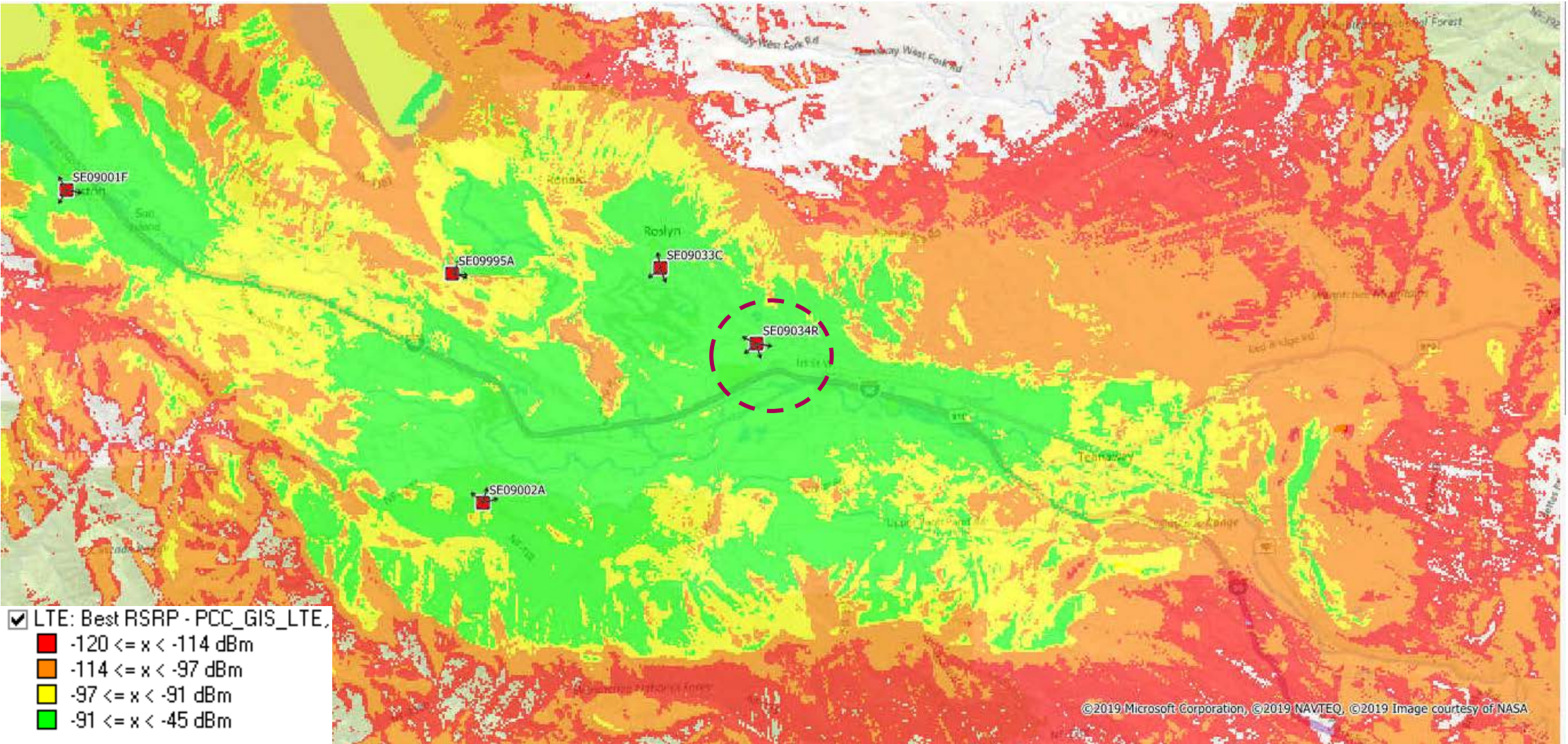
SE09034P - Future Dog Park



SE09034Q - Wastewater Treatment Plant



SE09034R - Water Treatment Plant



SE09034S - DOT ROW Property

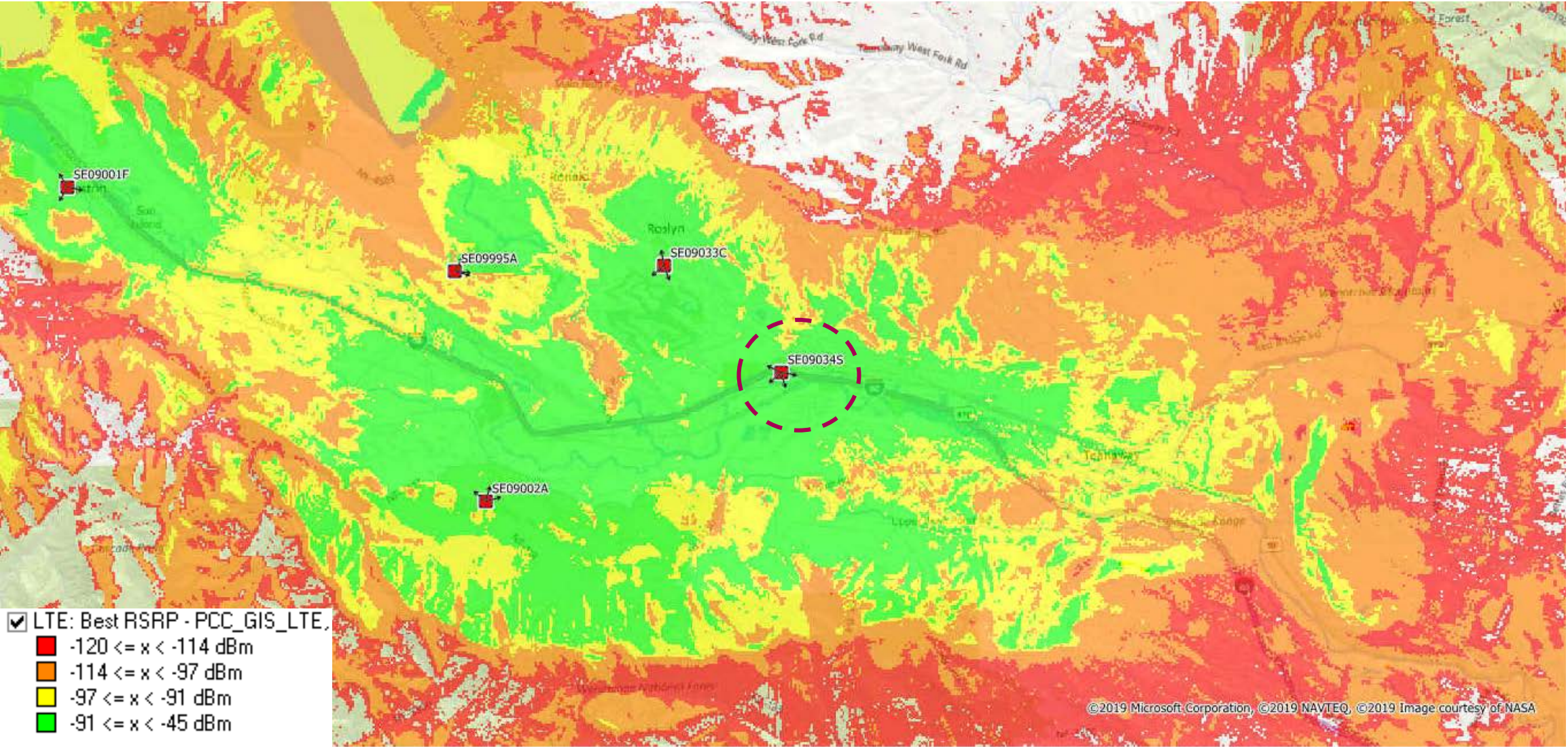
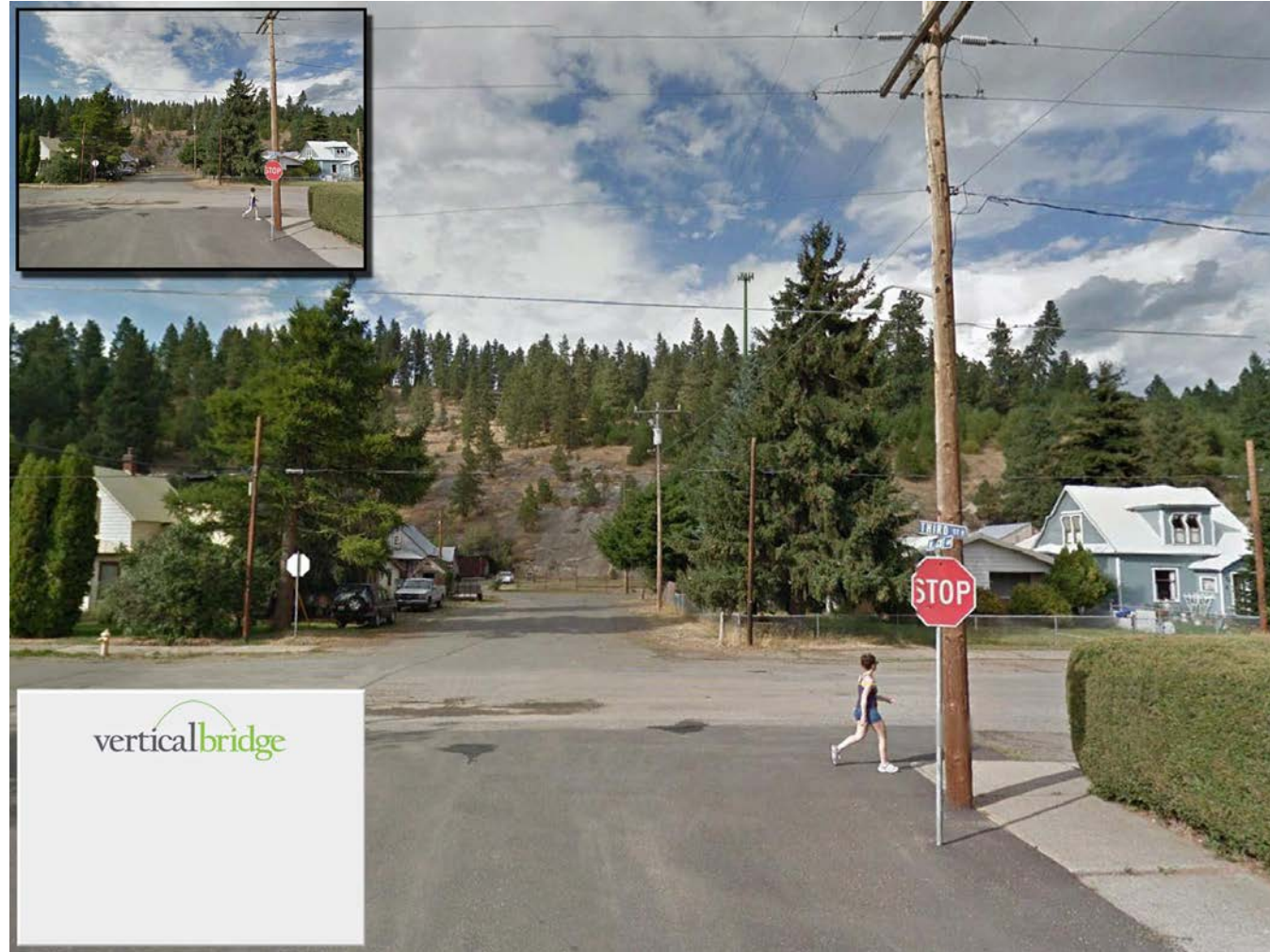


Photo Simulations

3

Photosim View From 3rd Street & Wright Ave

Street View



Photosim View From Park Hillside

Shows proposed retaining wall, fenced compound and tower base



Photosim View From Park Access Trail

Shows proposed fenced compound & tower



Photosim View From Park Access Trail

Shows proposed fenced compound & tower





Enabling Mobile
& Internet
Connectivity

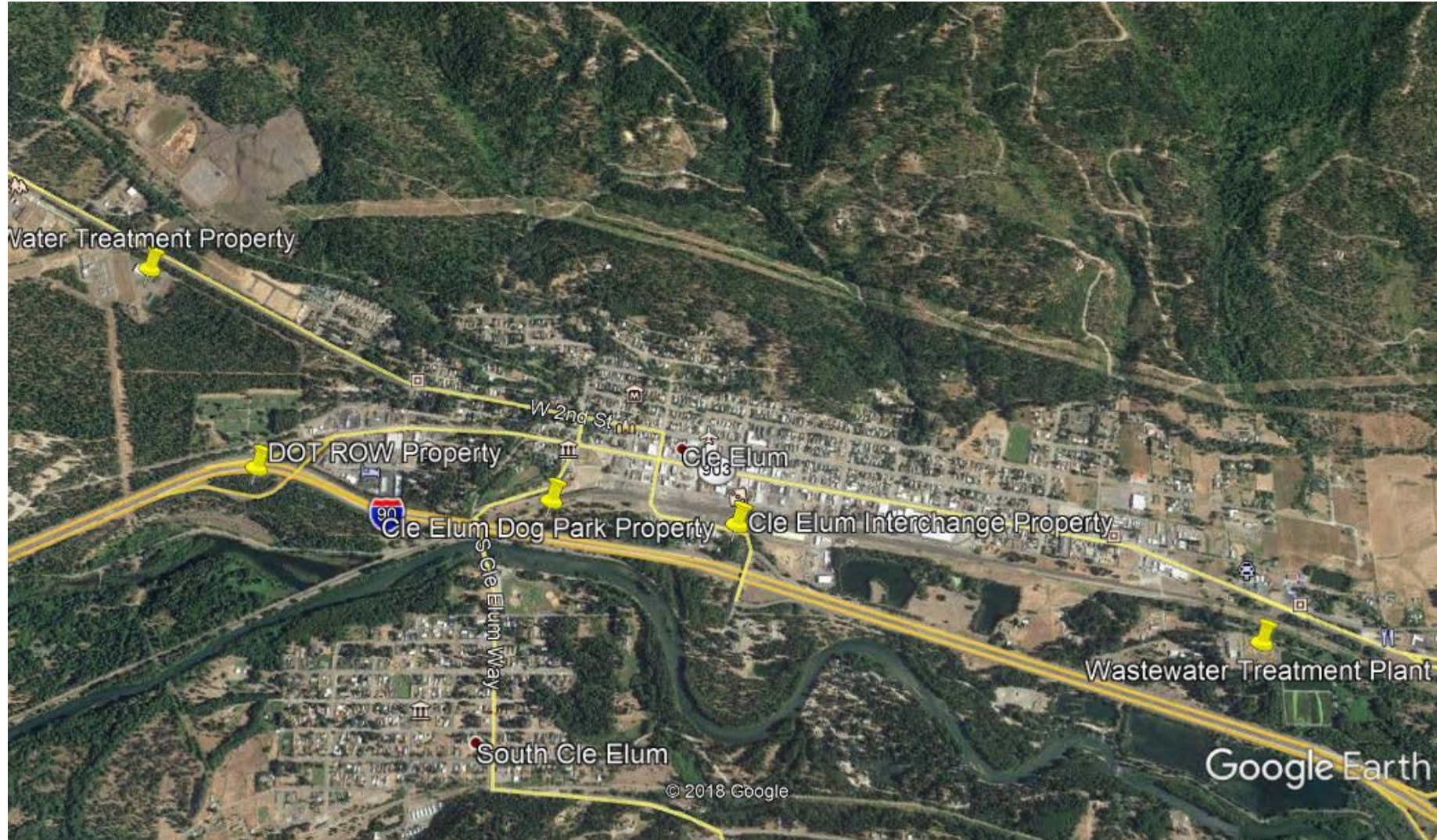
Project History & Sites Considered

4

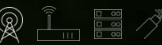
Project History

- Performed exhaustive search over multiple properties to find the least impactful location within the City
- Vertical Bridge explored several different sites
 - Searched sites west and east of City
 - Explored site along railroad tracks
- Discussed proposed options with City of Cle Elum
- Desirable location for City of Cle Elum and T-Mobile
 - Site did not block view of Peoh point
 - Site met RF objectives and able to cover the entire City of Cle Elum downtown area
- T-Mobile selected City of Cle Elum as Primary Candidate and awarded contract to Vertical Bridge
- Vertical Bridge accommodated the City of Cle Elum in the final site selection location
 - Explored site on hill to keep away from City center
 - Factored obstructions and view to Peoh Point
 - Produced Geotech Report, Drainage Site Plans/Report, and Stormwater Pollution Prevention Plan to alleviate City concerns on runoff from added traffic and improvements to the side of the hill.

Original Sites Considered



Enabling Mobile
& Internet
Connectivity



Community Benefits

5

Community Benefits

- Was considered the least intrusive site with the least direct community impact on the City & residents.
- Because the tower facility is unmanned, it has ZERO impact on water, wastewater & traffic.
- Positively increase the City's tax base and provide additional revenue
- Positively improve communications for citizens of City of Cle Elum
 - T-Mobile's target is to provide -88dBm of signal strength to its customers in all areas. This level of coverage guarantees reliable signal strength inside buildings to provide excellent voice and data quality in residential neighborhoods and commercial areas
 - T-Mobile operates the largest all-digital, nationwide wireless network based on the globally dominant GSM (Global System for Mobile Communications), UMTS (Universal Mobile Telecommunication System), and LTE (Long Term Evolution) technologies. T-Mobile's entire network has been enhanced to provide its customers with best in class wireless Internet service
 - Assists with bolstering the Emergency Services/E-911 capabilities in the area that is currently under served.

The background of the slide features a green-tinted image of a hand holding a smartphone, with a cellular tower and signal waves visible in the background.

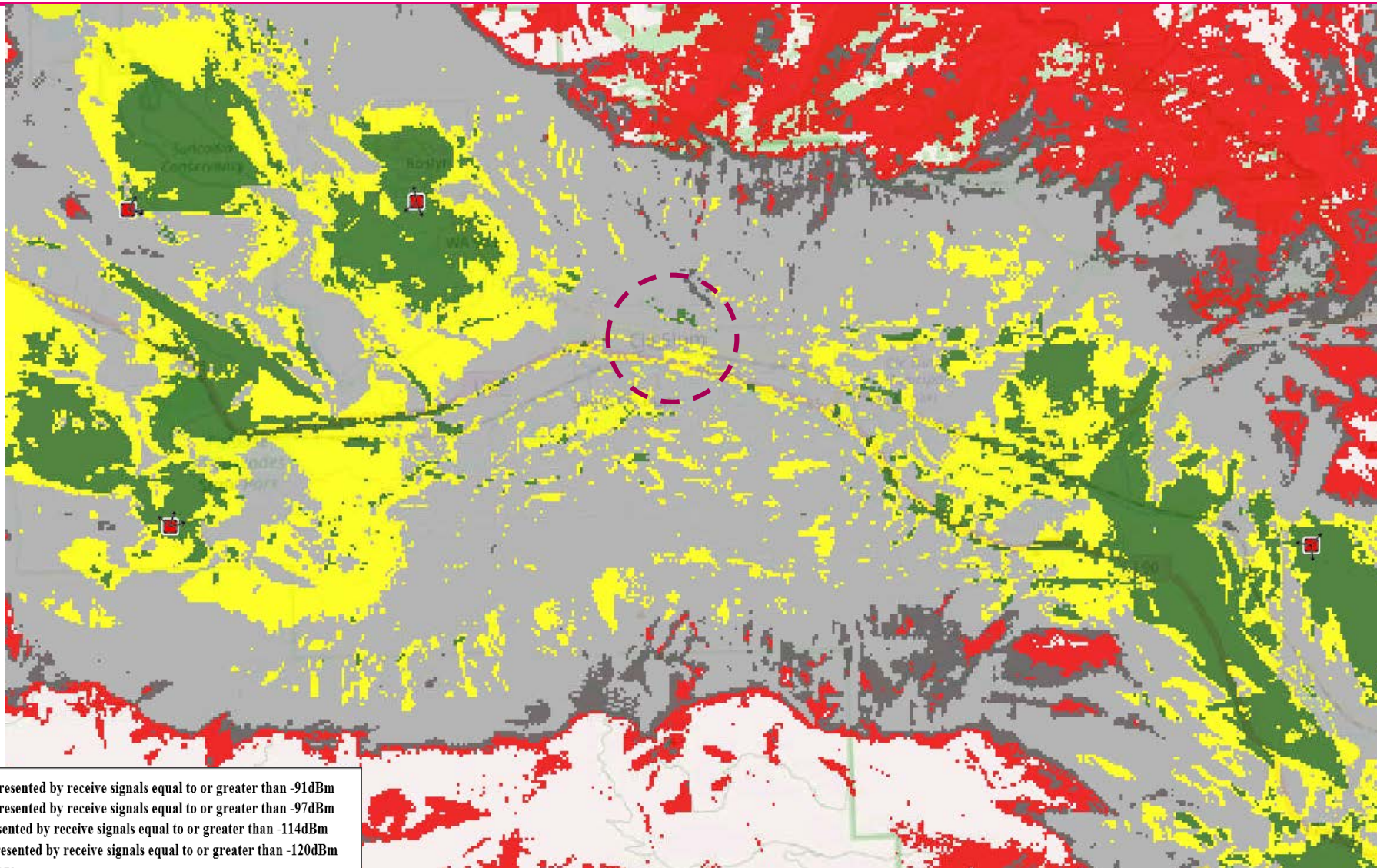
Enabling Mobile
& Internet
Connectivity



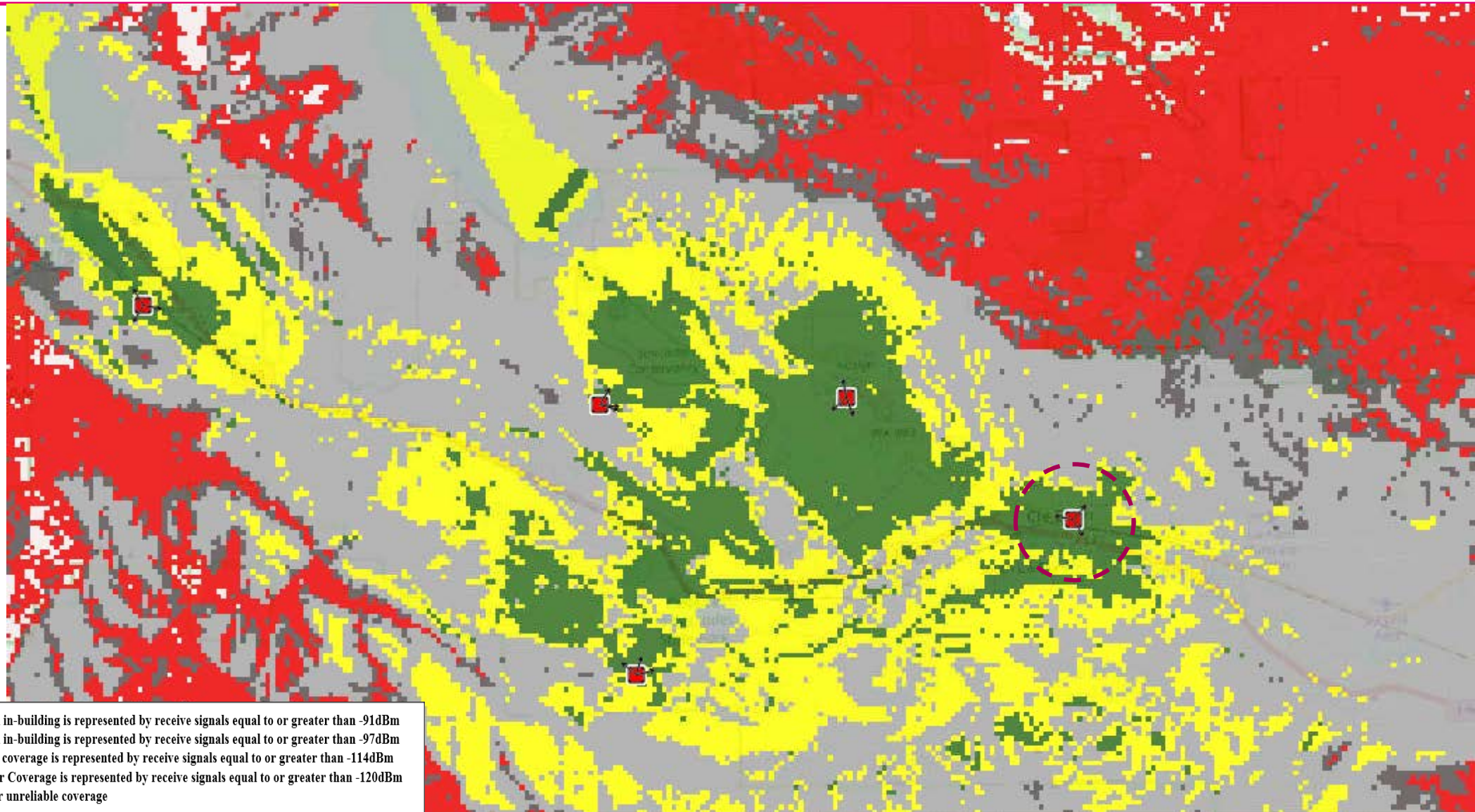
Additional Coverage Maps

6

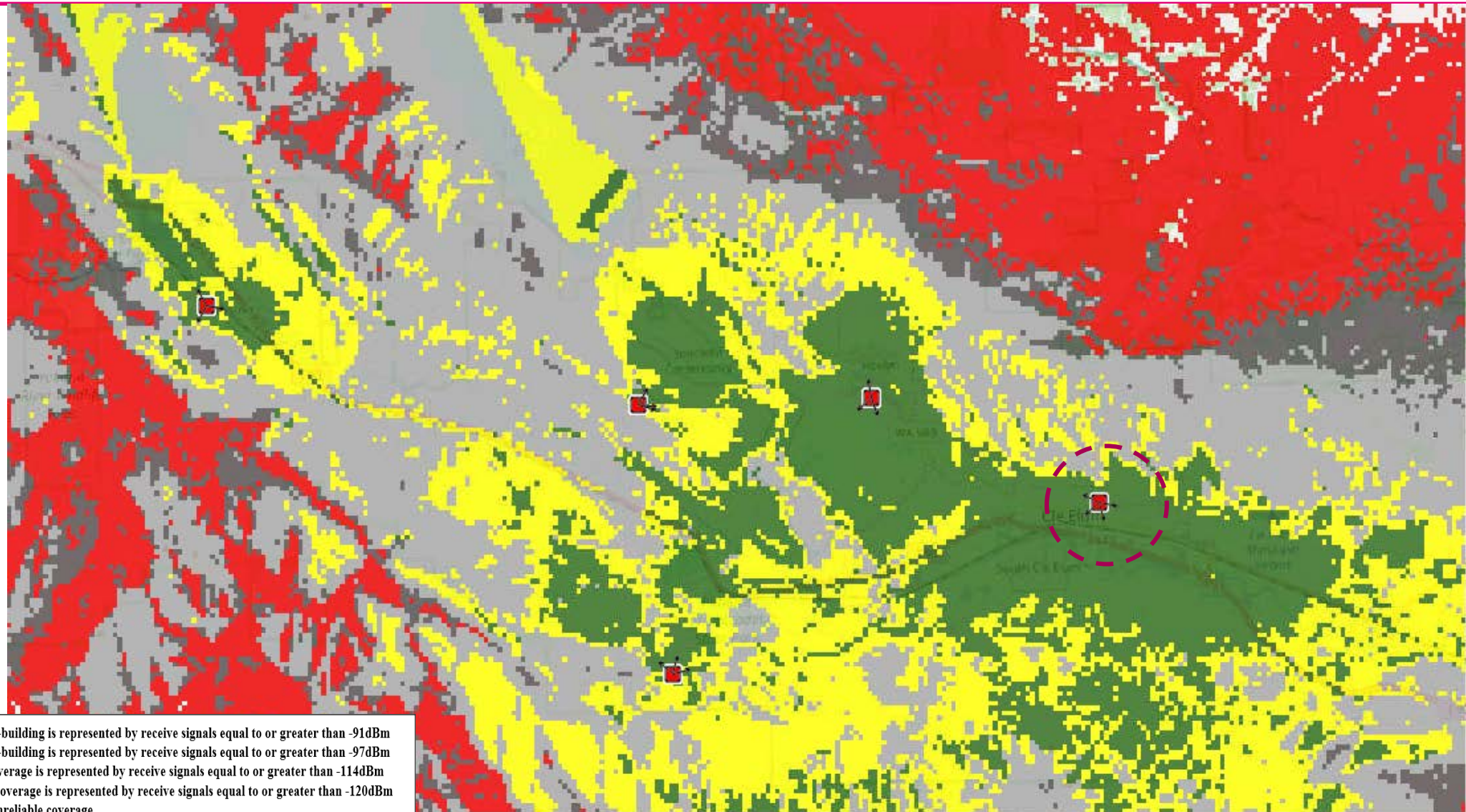
Area LTE coverage without SE09034J



Area LTE coverage with SE09026A @ 50 feet RAD Center



Area LTE coverage with SE09034J @ 150 feet RAD Center



Area LTE coverage without SE09034J (Close up)

