

*City of Cle Elum*  
119 West First Street  
Cle Elum, WA 98922



Telephone: (509) 674-2262  
Fax: (509) 674-4097  
[www.cityofcleelum.com](http://www.cityofcleelum.com)

**CITY OF CLE ELUM**  
**OPTIONAL DNS PROCESS**  
**FOR STATE ENVIRONMENTAL POLICY ACT (SEPA) CHECKLIST,**  
**SITE & DESIGN REVIEW, AND FLOODPLAIN PERMIT**

**Who?**

Applicant: Garnet Ledge Investments LP; PO Box 946, Roslyn, WA 98941; 509-572-7721

State Environmental Policy Act (SEPA) Lead Agency: City of Cle Elum

SEPA Official: Lucy Temple, City Planner

**What?**

The City received an application for a proposed 8,000 sf pre-manufactured steel building to be operated as a climate-controlled and dry wine storage facility, with 43 new or adjusted parking spaces.

The City of Cle Elum has chosen to use the Optional DNS Process per WAC 197-11-355, as a combined Notice of Application for a State Environmental Policy Act (SEPA) Checklist, Site & Design Review (SDR), and Floodplain Permit (FP) for the subject project to provide a combined 14-day public comment period and accept public comment.

Documentation is available at City Hall or on the City webpage: <http://cityofcleelum.com/city-services/administrative-services/public-notices/>

**When?**

A 14-day comment period is required for the project, which ends **December 16, 2020**. Once the comment period ends and all written comments received are reviewed, the City anticipates issuing a SEPA Determination of Nonsignificance (DNS) before moving forward with permit processes.

**Where?**

The proposed location is within the area known locally as the Swiftwater Business Park on parcel 123134 at 400 Swiftwater Blvd, Cle Elum, WA (vicinity map on reverse side).

**Why?**

The purpose of this review is to environmentally evaluate the project.

Per Cle Elum Municipal Code 15.28.200, WAC 197-11-355 the SEPA Checklist is being distributed to agencies with Jurisdiction. Others will receive this summary documentation as a neighboring property owner, courtesy, or due to a request.

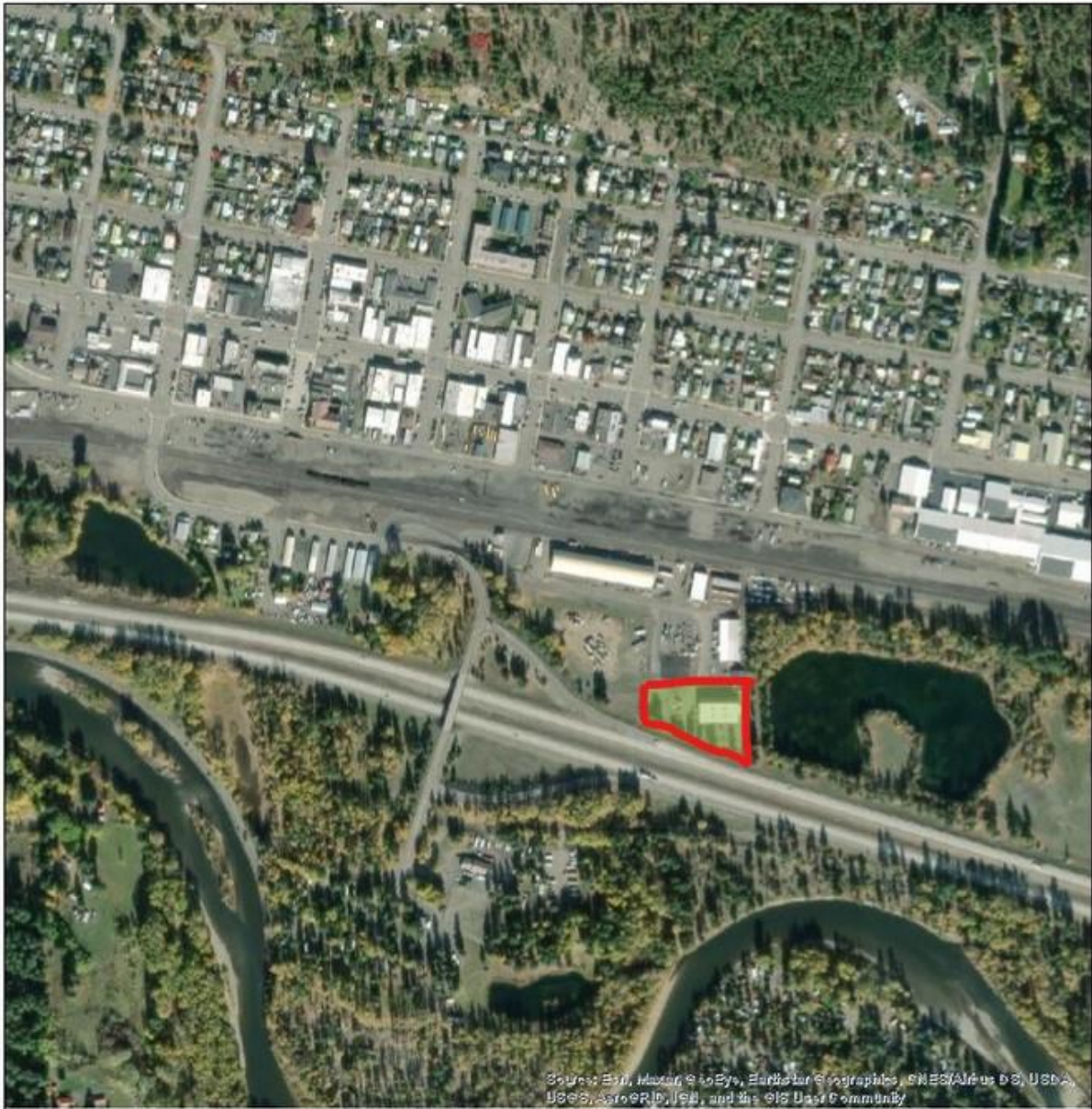
**COMMENTS SHOULD BE SENT TO:**

[ltemple@cleelum.gov](mailto:ltemple@cleelum.gov)

OR

Lucy Temple  
SEPA Responsible Official  
119 West First Street  
Cle Elum, WA 98922

# Project Vicinity Map



Source: Esri, Maxar, GeoEye, Earthstar Geographics, CNES/Airbus DS, USDA, USGS, AeroGRID, IGN, and the GIS User Community

Date: 11/16/2020

1 inch = 752 feet  
Relative Scale 1:9,028

**Disclaimer:**  
Kittitas County makes every effort to produce and publish the most current and accurate information possible. No warranties, expressed or implied, are provided for the data, its use, or its interpretation. Kittitas County does not guarantee the accuracy of the material contained herein and is not responsible for any use, misuse or representations by others regarding this information or its derivatives.

