

City of Cle Elum
119 West First Street
Cle Elum, WA 98922



Telephone: (509) 674-2262
Fax: (509) 674-4097
www.cityofcleelum.com

CITY OF CLE ELUM
OPTIONAL DNS PROCESS
DNS ISSUED

Who?

Applicant: Garnet Ledge Investments LP; PO Box 946, Roslyn, WA 98941; 509-572-7721

State Environmental Policy Act (SEPA) Lead Agency: City of Cle Elum

SEPA Official: Lucy Temple, City Planner

What?

The City received an application for a proposed 8,000 sf pre-manufactured steel building to be operated as a climate-controlled and dry wine storage facility, with 43 new or adjusted parking spaces.

The City of Cle Elum chose to use the Optional DNS Process per WAC 197-11-355, as a combined Notice of Application for a State Environmental Policy Act (SEPA) Checklist, Site & Design Review (SDR), and Floodplain Permit (FP) for the subject project.

The comment period ended on December 16, 2020 and the City has issued the Determination of Nonsignificance (DNS).

Documentation is available at City Hall or on the City webpage: <http://cityofcleelum.com/city-services/planning/garnet-ledge-investments-storage-facility/>

When?

The City issued a SEPA Determination of Nonsignificance (DNS) on December 17, 2020.

Where?

The proposed location is within the area known locally as the Swiftwater Business Park on parcel 123134 at 400 Swiftwater Blvd, Cle Elum, WA (vicinity map on reverse side).

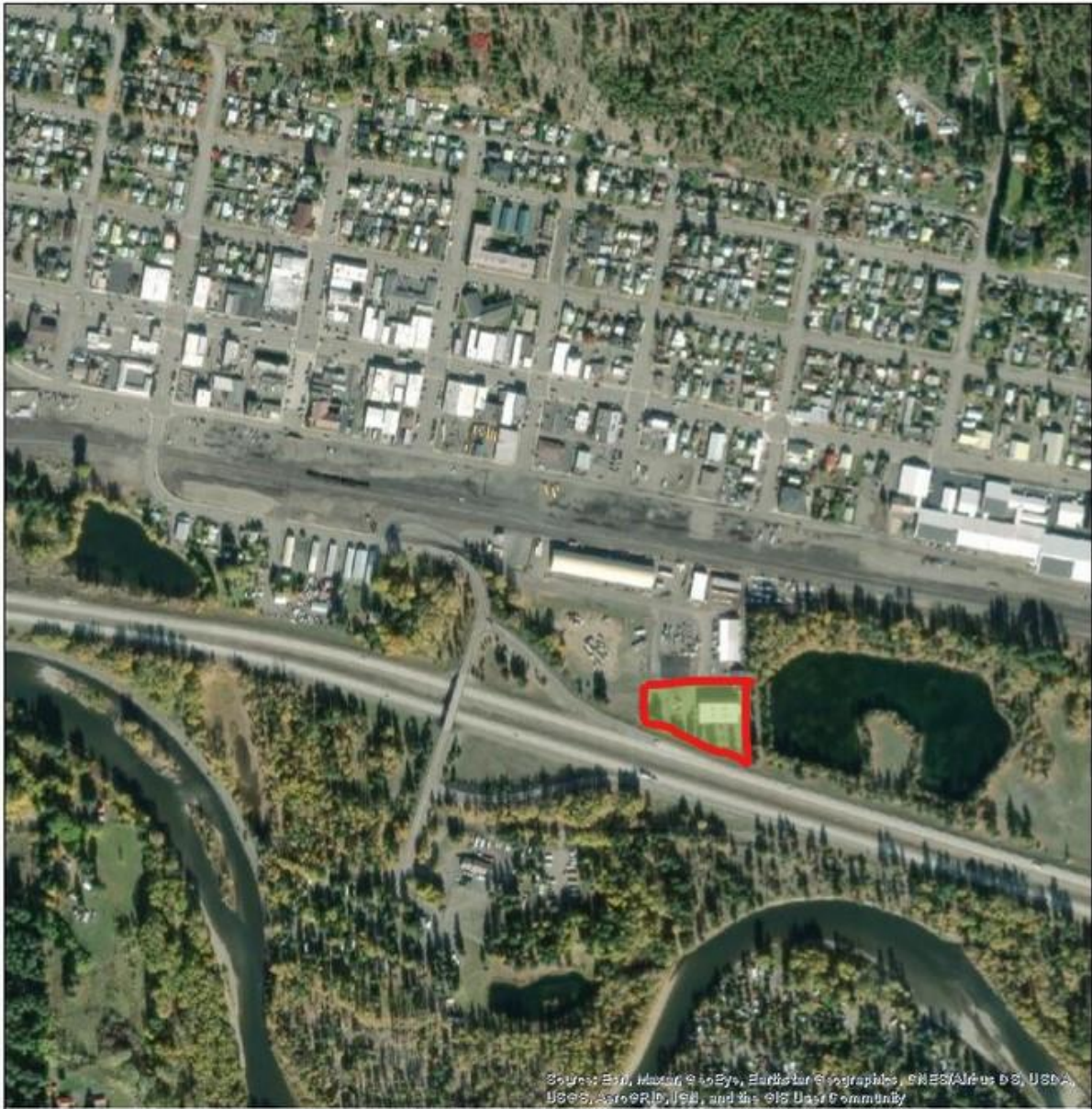
Why?

The purpose of this review was to environmentally evaluate the project.

Per Cle Elum Municipal Code 15.28.200, WAC 197-11-355 the SEPA DNS is being distributed to agencies with Jurisdiction and other parties of record, including property owners within 300 feet.

The comment period is no longer open on this project.

Project Vicinity Map



Source: Esri, Maxar, GeoEye, Earthstar Geographics, CNES/Airbus DS, USDA, USGS, AeroGRID, IGN, and the GIS User Community

Date: 11/16/2020

1 inch = 752 feet
Relative Scale 1:9,028

Disclaimer:
Kittitas County makes every effort to produce and publish the most current and accurate information possible. No warranties, expressed or implied, are provided for the data, its use, or its interpretation. Kittitas County does not guarantee the accuracy of the material contained herein and is not responsible for any use, misuse or representations by others regarding this information or its derivatives.

