

*City of Cle Elum*  
119 West First Street  
Cle Elum, WA 98922



Telephone: (509) 674-2262  
Fax: (509) 674-4097  
[www.cityofcleelum.com](http://www.cityofcleelum.com)

**CITY OF CLE ELUM**  
**NOTICE OF APPLICATION**  
**FOR SITE & DESIGN REVIEW**

**Who?**

Applicant: Gravity Coffee c/o PM Design

Applicant Contact: Amanda Martin of PM Design; 425-967-8409; 19401 40<sup>th</sup> Ave W #420, Lynnwood, WA 98036

City Contact: Lucy Temple, City Planner, [ltemple@cleelum.gov](mailto:ltemple@cleelum.gov); 509-674-2262 x102

**What?**

The City received an application for a proposed redevelopment project on December 7, 2021.

The City of Cle Elum has issued a Notice of Application per CEMC 17.100.110 for a Site & Design Review (SDR) for the subject project to provide a 14-day public comment period.

Documentation is available at City Hall or on the City webpage: <http://cityofcleelum.com/city-services/planning/proposed-gravity-coffee/>

**When?**

A 14-day comment period is required for the project, which ends **January 27, 2021**.

**Where?**

The proposed location is 808 W Davis, Cle Elum, WA 98922, Parcel #951507 (vicinity map on reverse side).

**Why?**

The purpose of this review is to collect community comments on the project.

If you are receiving this notice, you are an agency with jurisdiction, neighboring property owner, or a requested party of record.

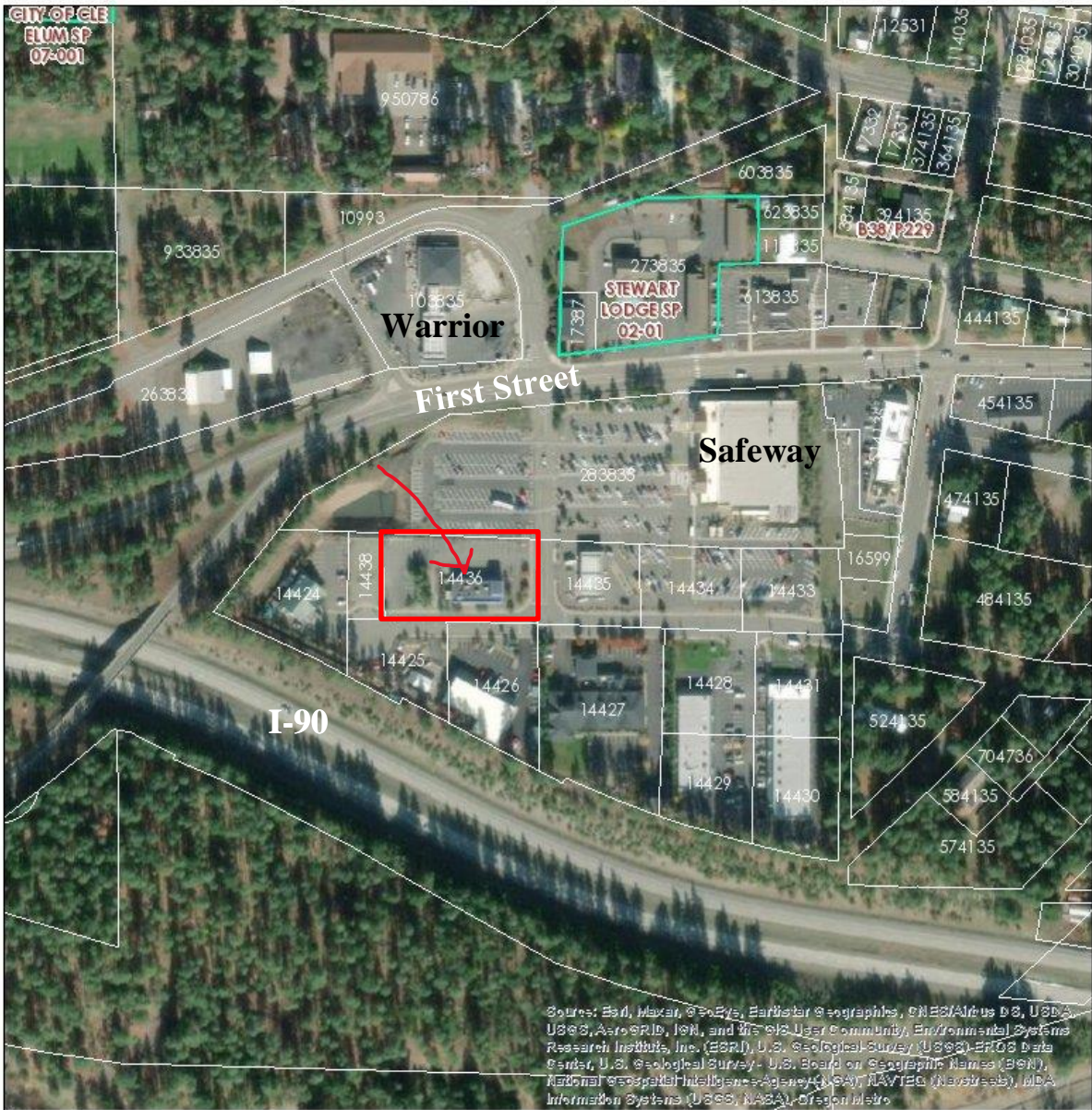
**COMMENTS SHOULD BE SENT TO:**

[ltemple@cleelum.gov](mailto:ltemple@cleelum.gov)

OR

Lucy Temple  
119 West First Street  
Cle Elum, WA 98922

# Kittitas County COMPAS Map



Source: Esri, Maxar, GeoEye, Earthstar Geographics, CNES/Airbus DS, USDA, USGS, AeroGRID, IGN, and the GIS User Community, Environmental Systems Research Institute, Inc. (ESRI), U.S. Geological Survey (USGS), ERDC Data Center, U.S. Geological Survey - U.S. Board on Geographic Names (BGN), National Geospatial Intelligence Agency (NGA), NAVTEQ (Navstar), BDA Information Systems (USGS), NASA, GEBCO, etc.

Date: 1/12/2021

1 inch = 376 feet  
Relative Scale 1:4,514

**Disclaimer:**  
Kittitas County makes every effort to produce and publish the most current and accurate information possible. No warranties, expressed or implied, are provided for the data, its use, or its interpretation. Kittitas County does not guarantee the accuracy of the material contained herein and is not responsible for any use, misuse or representations by others regarding this information or its derivatives.

