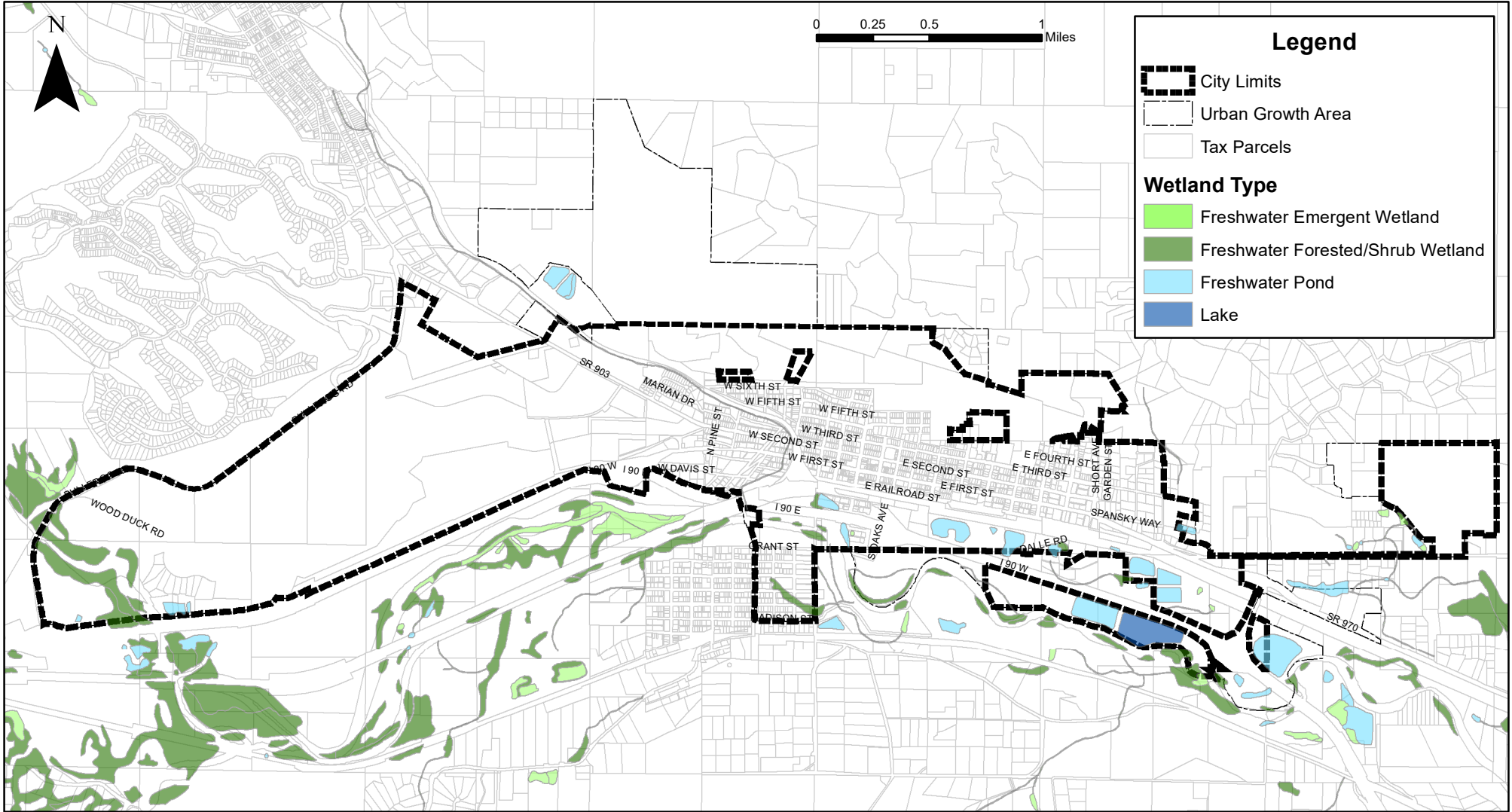




# CITY OF CLE ELUM

## Critical Areas



**Legend**

- City Limits
- Urban Growth Area
- Tax Parcels

**Wetland Type**

- Freshwater Emergent Wetland
- Freshwater Forested/Shrub Wetland
- Freshwater Pond
- Lake



Planning Department  
 119 West First Street  
 Cle Elum, WA 98922

Data:  
 Kittitas County Tax  
 Parcel Data  
 by, KitCoGIS

City Boundaries  
 by, KitCoGIS

Urban Growth Area  
 by, KitCoGIS

National Wetlands  
 Inventory  
 by, Fish and Wildlife

3/19/19

Wetlands  
 Figure 4