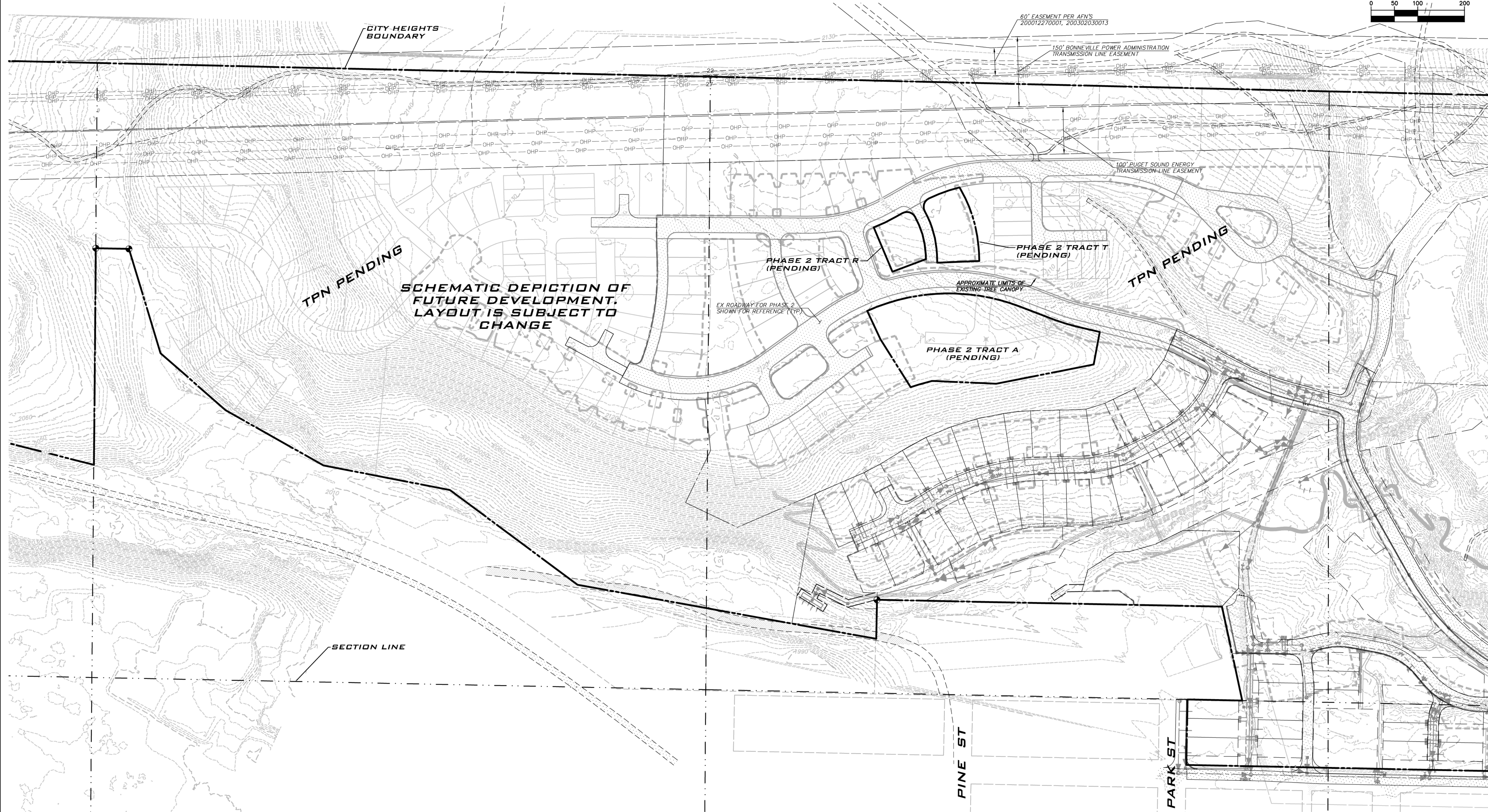




SCALE: 1" = 100'
0 50 100 200

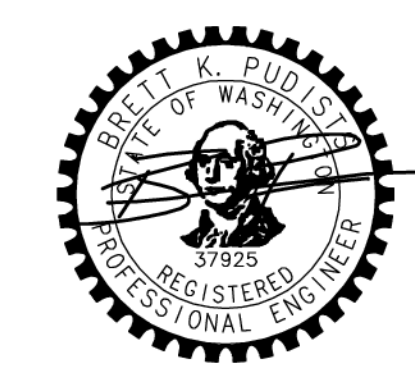
BLUELINE
25 CENTRAL WAY, SUITE 400,
KIRKLAND, WA 98033
P: 425.216.4051 F: 425.216.4052
WWW.THEBLUELINEGROUP.COM

SCALE:
AS NOTED
PROJECT MANAGER:
BRETT K PUDISTS, PE
PROJECT ENGINEER:
DENE KUZARO
DESIGNER:
AARON LANCE
ISSUE DATE:
1/19/2023



NO	DATE	BY	REVISIONS

EXISTING CONDITIONS MAP
CITY HEIGHTS
PHASE 3
PRELIM CLEARING, GRADING & INFRASTRUCTURE PLANS
CITY OF GLE ELUM
WASHINGTON

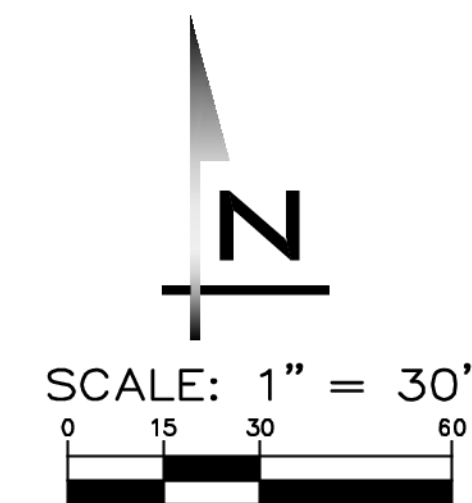


1/19/23
JOB NUMBER:
19-349
SHEET NAME:
EC-01
SHT **3** OF **23**

BASE MAP NOTES
BASE MAP INFO - UNLESS OTHERWISE NOTED, BASE MAP INFO SHOWN IS PER FILES PROVIDED BY SURVEYOR(S) OF RECORD.

EX PARCEL NOTES
AFTER RECORDING OF CITY HEIGHTS PHASE 2 FINAL PLAT
ONCE CITY HEIGHTS PHASE 2 FINAL PLAT RECORDS THREE NEW TRACTS NAMED TRACTS A, R, & T WILL BE CREATED TO INCLUDE LAND SET ASIDE FOR DEVELOPMENT OF PHASE 3 (THE LIMITS OF THESE TRACTS IS SHOWN FOR REFERENCE).

EXISTING UTILITY NOTE
EXISTING UTILITIES ARE SHOWN IN THE APPROXIMATE LOCATION. THERE IS NO GUARANTEE THAT ALL UTILITY LINES ARE SHOWN, OR THAT THE LOCATION, SIZE AND MATERIAL IS ACCURATE. THE CONTRACTOR SHALL UNCOVER ALL INDICATED PIPING WHERE CROSSING, INTERFERENCES, OR CONNECTIONS OCCUR PRIOR TO TRENCHING OR EXCAVATION FOR ANY PIPE OR STRUCTURES. TO DETERMINE ACTUAL LOCATIONS, SIZE AND MATERIAL THE CONTRACTOR SHALL MAKE THE APPROPRIATE PROVISION FOR PROTECTION OF SAID FACILITIES. THE CONTRACTOR SHALL NOTIFY ONE CALL AT 8-1-1 (WASHINGTON11.COM) AND ARRANGE FOR FIELD LOCATION OF EXISTING FACILITIES BEFORE CONSTRUCTION.



TRACT TABLE		
TRACT	DESCRIPTION	AREA
A	OPEN SPACE (PRIVATE)	12,476 SF (0.29 AC)
B	OPEN SPACE (PRIVATE)	8,846 SF (0.20 AC)

LOT AREAS	
LOT #	AREA
1	2,896 SF
2	2,004 SF
3	1,947 SF
4	2,454 SF
5	2,776 SF
6	1,990 SF
7	3,147 SF
8	2,910 SF
9	2,781 SF
10	3,691 SF
11	3,377 SF
12	3,207 SF
13	4,045 SF
14	4,000 SF
15	4,001 SF
16	4,353 SF
17	4,000 SF
18	3,909 SF
19	4,753 SF

OPEN SPACE, NATURAL AREAS & PUBLIC SPACES (*125 Ac Cumulative)			
Phase	Tract Name	Area (Ac)	Designation/Description
3	A	0.29	OPEN SPACE (PRIVATE)
3	B	0.20	OPEN SPACE (PRIVATE)
Phase 3 Total		0.49	
Phase 2 Total		10.76	
Phase 1 Total		18.32	
Current Total		29.57	

*Per DA Appendix B and H, 125 Acres (35% of total site acreage) to be set aside as open space, natural areas, parks, recreation areas, village greens, commons or public assembly areas or otherwise undeveloped space.

BUILDING SETBACK NOTE

- 5' BUILDING SETBACK FROM ALL LOT LINES TO BE DEPICTED ON FINAL PLAT.
- 5' SIDE YARD SETBACK MAY BE ELIMINATED FOR ZERO LOT LINE ATTACHED PRODUCT.

ROAD DESIGNATIONS & ACCESS EASEMENTS

- UNLESS OTHERWISE NOTED, TRACT ROADS (MOUNTAINEER WAY) WILL BE PRIVATELY OWNED AND MAINTAINED AND WILL INCLUDE A PUBLIC ACCESS EASEMENT TO ACCOMMODATE EMERGENCY VEHICLES.
- ROADS IN RIGHT OF WAY ARE LOCAL UNLESS OTHERWISE NOTED AS COLLECTOR.

EASEMENT NOTES

- PROVIDE 5' EASEMENT FOR SNOW PLOWING AND STORAGE ALONG LOTS FRONTING ONSITE ROADS THAT ARE NOT COLLECTORS.
- PROVIDE 10' EASEMENT ALONGSIDE COLLECTOR ROADS FOR SNOW PLOWING AND STORAGE.

EXISTING UTILITY NOTE

EXISTING UTILITIES ARE SHOWN IN THE APPROXIMATE LOCATION. THERE IS NO GUARANTEE THAT ALL UTILITY LINES ARE SHOWN, OR THAT THE LOCATION, SIZE AND MATERIAL IS ACCURATE. THE CONTRACTOR SHALL UNCOVER ALL INDICATED PIPING WHERE CROSSING, INTERFERENCES, OR CONNECTIONS OCCUR PRIOR TO TRENCHING OR EXCAVATION FOR ANY PIPE OR STRUCTURES. TO DETERMINE ACTUAL LOCATIONS, SIZE AND MATERIAL, THE CONTRACTOR SHALL MAKE THE APPROPRIATE PROVISION FOR PROTECTION OF SAID FACILITIES. THE CONTRACTOR SHALL NOTIFY ONE CALL AT 8-1-1 (WASHINGTON811.COM) AND ARRANGE FOR FIELD LOCATION OF EXISTING FACILITIES BEFORE CONSTRUCTION.



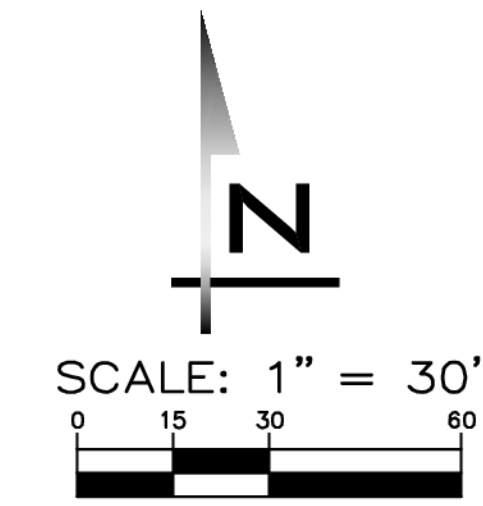
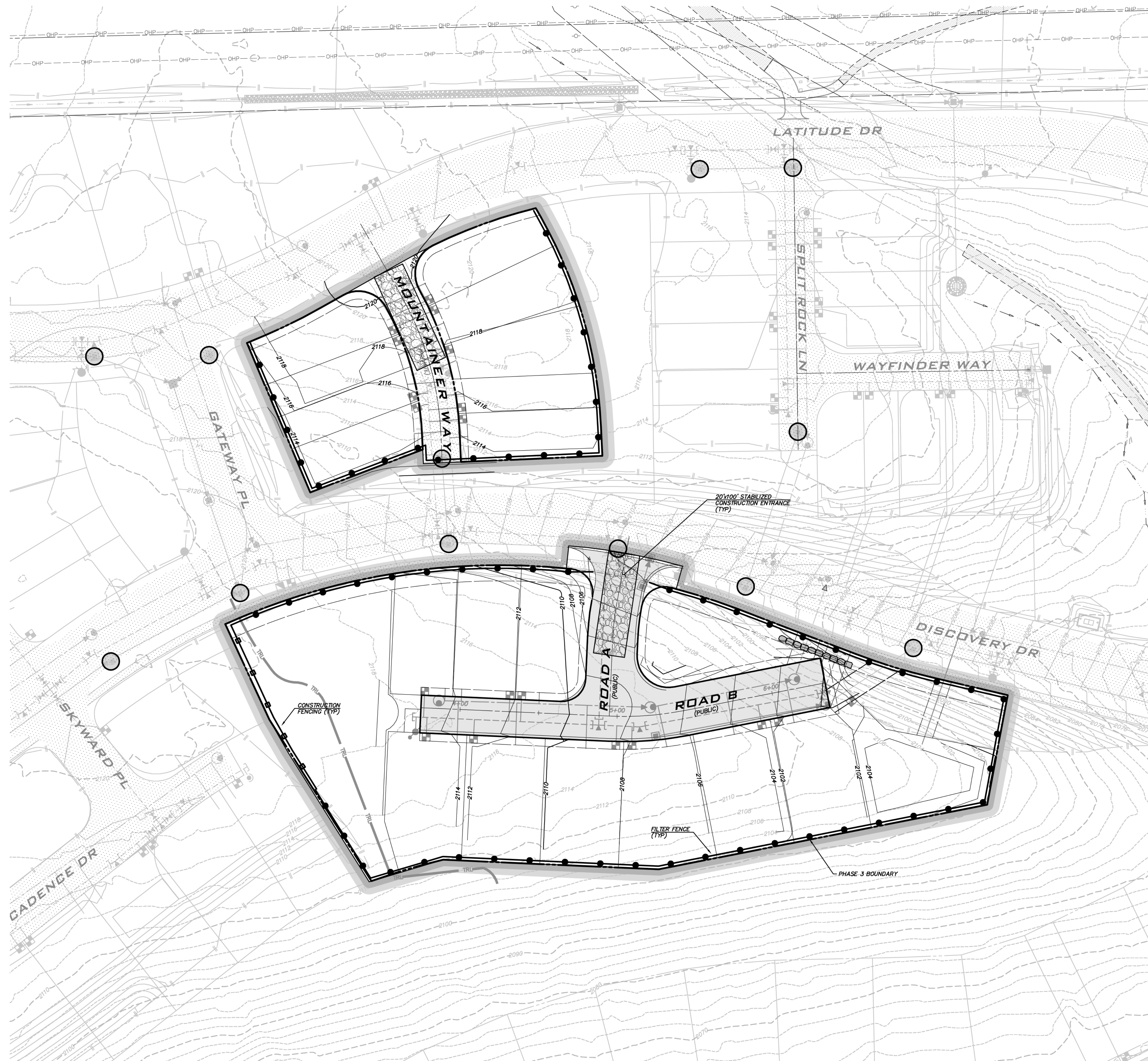
SCALE: AS NOTED
 PROJECT MANAGER: BRETT K PUDISTS, PE
 PROJECT ENGINEER: DENÉ KUZARO
 DESIGNER: AARON LANCE
 ISSUE DATE: 1/19/2023

NO	DATE	BY	REVISIONS

SITE PLAN
CITY HEIGHTS
PHASE 3
 PRELIM CLEARING, GRADING & INFRASTRUCTURE PLANS
 WASHINGTON
 CITY OF GLE ELUM



1/19/23
 JOB NUMBER: 19-349
 SHEET NAME: S1-01
 SHT 5 OF 23



BLUELINE
 25 CENTRAL WAY, SUITE 400,
 KIRKLAND, WA 98033
 P: 425.216.4051 F: 425.216.4052
 WWW.THEBLUELINEGROUP.COM

SCALE:
 AS NOTED
 PROJECT MANAGER:
BRETT K PUDISTS, PE
 PROJECT ENGINEER:
DENE KUZARO
 DESIGNER:
AARON LANCE
 ISSUE DATE:
1/19/2023

NO	DATE	BY

TESS PLAN
CITY HEIGHTS
PHASE 3
PRELIM CLEARING, GRADING & INFRASTRUCTURE PLANS
CITY OF GLE ELUM
WASHINGTON

LEGEND	
TESS FEATURES	
●	FILTER FENCE
—	CONSTRUCTION FENCE OR LATHE/FLAGGING
—	TREE PROTECTION FENCE
—	INTERCEPTOR SWALE
—	INTERCEPTOR CULVERT
—	TEMPORARY STORM PIPE
—	LIMITS OF CLEARING
○	INTERIM CATCH BASIN PROTECTION (GRAVEL)
○	INTERIM CATCH BASIN PROTECTION (INSERT)
■	RIPRAP PAD
■	ROCK CHECK DAM
■	STRAW BALE
■	OVERFLOW STRUCTURE
●	TEMPORARY CB, TYPE I
●	TEMPORARY CB, TYPE II
○	PIPE FLOW
○	TEMPORARY STAND PIPE
△	TRIANGULAR SILT DIKE

TESS NOTE
 SEE SHEET TD-01 FOR ADDITIONAL TESS NOTES AND DETAILS.

CLEARING NOTES

- AREAS WITHIN LIMITS OF DISTURBANCE ARE SUBJECT TO TREE REMOVAL AND CLEARING. REFER TO TREE PRESERVATION AND CLEARING PLAN FOR INFO.
- DELINEATE UP GRADIENT LIMITS OF DISTURBANCE WITH SURVEY FLAGGING AND LATHE OR ORANGE CONSTRUCTION FENCING.
- DUST CONTROL MEASURES AS DESCRIBED IN BMP C140 (SUMMEW) SHALL BE UTILIZED TO CONTROL DUST. THESE MEASURES MAY INCLUDE, BUT ARE NOT LIMITED TO: CLEARING ONLY AREAS WHERE CUTTING WILL TAKE PLACE; WETTING CLEARED AREAS; VEGETATING/MULCHING; AREAS THAT WILL NOT RECEIVE VEHICLE TRAFFIC, ETC.. CONTRACTOR WILL HAVE ACCESS TO A WATER TRUCK AT ALL TIMES.

GEOTECHNICAL NOTES
 REFER TO SHEET EC-01 FOR GEOTECHNICAL NOTES.

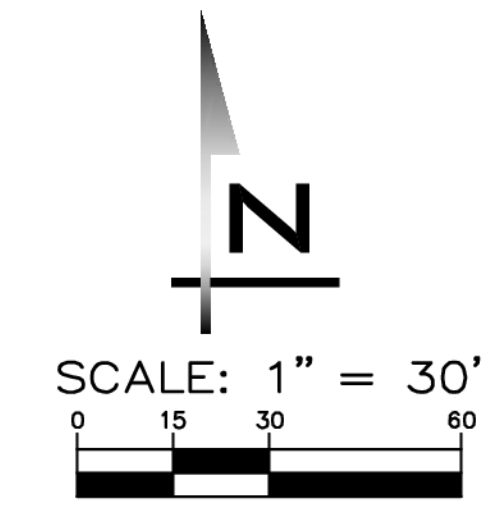
EXISTING UTILITY NOTE

EXISTING UTILITIES ARE SHOWN IN THE APPROXIMATE LOCATION. THERE IS NO GUARANTEE THAT ALL UTILITY LINES ARE SHOWN, OR THAT THE LOCATION, SIZE AND MATERIAL IS ACCURATE. THE CONTRACTOR SHALL UNCOVER ALL INDICATED PIPING WHERE CROSSING, INTERFERENCES, OR CONNECTIONS OCCUR PRIOR TO TRENCHING OR EXCAVATION FOR ANY PIPE OR STRUCTURES. TO DETERMINE ACTUAL LOCATIONS, SIZE AND MATERIAL. THE CONTRACTOR SHALL MAKE THE APPROPRIATE PROVISION FOR PROTECTION OF SAID FACILITIES. THE CONTRACTOR SHALL NOTIFY ONE CALL AT 8-1-1 (WASHINGTON11.COM) AND ARRANGE FOR FIELD LOCATION OF EXISTING FACILITIES BEFORE CONSTRUCTION.



1/19/23
 JOB NUMBER:
19-349
 SHEET NAME:
TP-01
 SHT **6** OF **23**

2/4/23
 Jan 19, 2023 11:56am User: adance
 C:\Projects\19-349 (City of Gle Elum)\Map\TP-01.dwg
 © 2023 BLUELINE



BLUELINE
 25 CENTRAL WAY, SUITE 400,
 KIRKLAND, WA 98033
 P: 425.216.4051 F: 425.216.4052
 WWW.THEBLUELINEGROUP.COM

SCALE: AS NOTED
 PROJECT MANAGER:
BRETT K PUDISTS, PE
 PROJECT ENGINEER:
DENE KUZARO
 DESIGNER:
AARON LANCE
 ISSUE DATE:
1/19/2023

NO	DATE	BY	REVISIONS

GRADING PLAN
CITY HEIGHTS
PHASE 3
 PRELIM CLEARING, GRADING & INFRASTRUCTURE PLANS
 CITY OF GLE ELUM
 WASHINGTON

ESTIMATED EARTHWORK QUANTITIES

CUT (CY)	FILL (CY)	NET (CY)
6,880	850	6,030 (CUT)

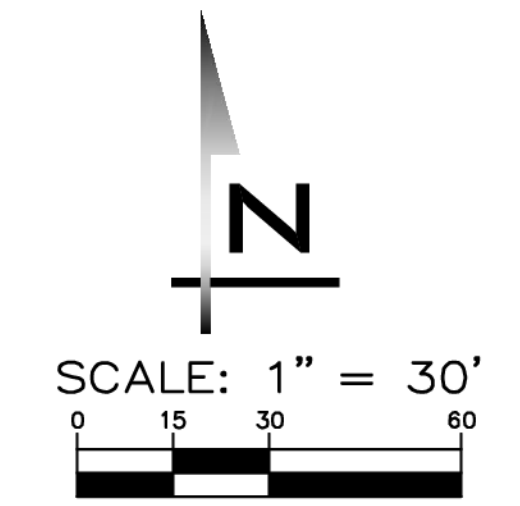
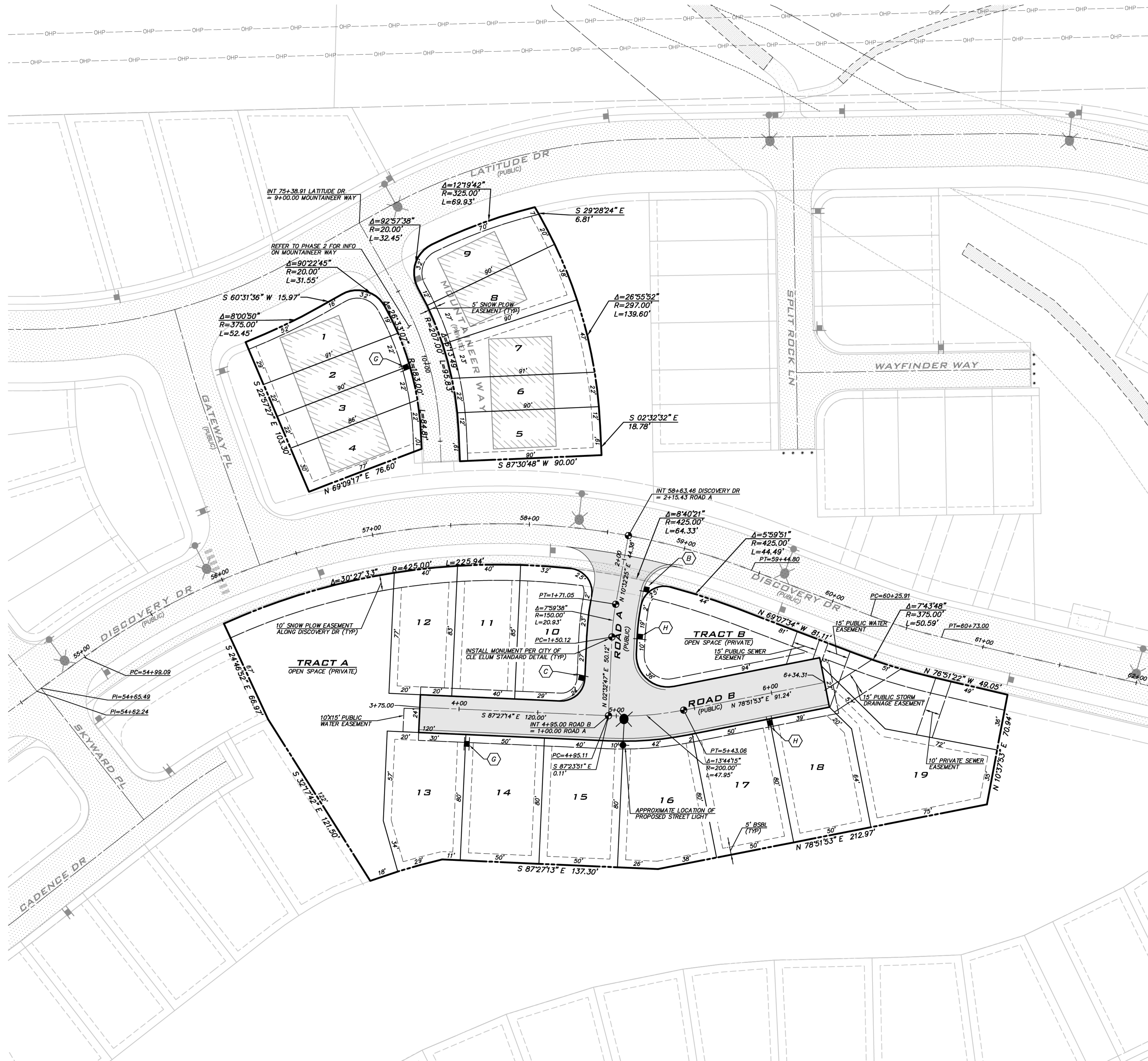
NOTE
 SEE SHEET RD-01 FOR TYPICAL ROADWAY SECTIONS.

- GRADING NOTES**
- MAX SLOPE OF PERMANENT GRADES TO BE 2:1.
 - PERMANENT DISTURBED SLOPES TO BE RE-VEGETATED TO PREVENT EROSION RELATED CONCERNS USING REGION SPECIFIC HYDRO SEED MIX OR ALTERNATE COMBINATION OF GROUND COVER AND PLANTINGS AS SPECIFIED BY THE PROJECT LANDSCAPE ARCHITECT.
 - INTERIM SLOPES AND DISTURBED AREAS TO BE HYDROSEEDED UNTIL PERMANENT COVER IS INSTALLED.

EXISTING UTILITY NOTE
 EXISTING UTILITIES ARE SHOWN IN THE APPROXIMATE LOCATION. THERE IS NO GUARANTEE THAT ALL UTILITY LINES ARE SHOWN, OR THAT THE LOCATION, SIZE AND MATERIAL IS ACCURATE. THE CONTRACTOR SHALL UNCOVER ALL INDICATED PIPING WHERE CROSSING, INTERFERENCES, OR CONNECTIONS OCCUR PRIOR TO TRENCHING OR EXCAVATION FOR ANY PIPE OR STRUCTURES, TO DETERMINE ACTUAL LOCATIONS, SIZE AND MATERIAL. THE CONTRACTOR SHALL MAKE THE APPROPRIATE PROVISION FOR PROTECTION OF SAID FACILITIES. THE CONTRACTOR SHALL NOTIFY ONE CALL AT 8-1-1 (WASHINGTON11.COM) AND ARRANGE FOR FIELD LOCATION OF EXISTING FACILITIES BEFORE CONSTRUCTION.

1/19/23
 JOB NUMBER:
19-349
 SHEET NAME:
GP-01
 SHT **8** OF **23**

2/4/23
 Jan 19, 2023 11:56am User: adance
 C:\Projects\19-349 (City of Gle Elum)\Drawings\GP-01.dwg



BLUELINE
 25 CENTRAL WAY, SUITE 400,
 KIRKLAND, WA 98033
 P: 425.216.4051 F: 425.216.4052
 WWW.THEBLUELINEGROUP.COM

SCALE:
 AS NOTED
 PROJECT MANAGER:
BRETT K PUDISTS, PE
 PROJECT ENGINEER:
DENE KUZARO
 DESIGNER:
AARON LANCE
 ISSUE DATE:
1/19/2023

NO	DATE	BY	REVISIONS

ALIGNMENT & SIGNAGE PLAN
CITY HEIGHTS
PHASE 3
PRELIM CLEARING, GRADING & INFRASTRUCTURE PLANS
CITY OF GLE ELUM
WASHINGTON

PAVEMENT WIDTHS
 SEE CROSS SECTIONS ON SHEET RD-01 FOR PAVEMENT WIDTHS.

- KEY NOTES**
- (A) INSTALL STOP SIGN (MUTCD R1-1) AND STREET NAME SIGN (MUTCD D3-1)
 - (B) INSTALL STOP SIGN (MUTCD R1-1), STREET NAME SIGN (MUTCD D3-1) AND NO OUTLET BLADE (MUTCD W14-2A)
 - (C) INSTALL STREET NAME SIGN (MUTCD D3-1)
 - (D) NO OUTLET BLADE (MUTCD W14-2A)
 - (E) INSTALL "PRIVATE ROAD" BLADE
 - (F) INSTALL 15 MPH SIGN
 - (G) INSTALL "NO PARKING - BOTH SIDES" SIGNS AT 150 SPACING
 - (H) INSTALL "NO PARKING" SIGN AT 150' ± SPACING
 - (I) INSTALL 20 MPH SIGN
 - (J) INSTALL "ONE WAY SIGN" WITH RIGHT ARROW
 - (K) INSTALL 4" YELLOW CENTERLINE LINE PER WSDOT STANDARD PLAN SKIP LINE M-20.10-03.
 - (L) INSTALL "DEAD END" SIGN
- MARKINGS SHALL BE PER WSDOT / APWA STANDARDS UNLESS OTHERWISE APPROVED.

- EASEMENT NOTES**
- PROVIDE 10' EASEMENT FOR SNOW PLOWING AND STORAGE ALONG LOTS FRONTING COLLECTOR ROADS (DISCOVERY DR).
 - PROVIDE 5' EASEMENT FOR SNOW PLOWING AND STORAGE ALONG LOTS FRONTING ALL OTHER ONSITE ROADS.

EXISTING UTILITY NOTE
 EXISTING UTILITIES ARE SHOWN IN THE APPROXIMATE LOCATION. THERE IS NO GUARANTEE THAT ALL UTILITY LINES ARE SHOWN, OR THAT THE LOCATION, SIZE AND MATERIAL IS ACCURATE. THE CONTRACTOR SHALL UNCOVER ALL INDICATED PIPING WHERE CROSSING, INTERFERENCES, OR CONNECTIONS OCCUR PRIOR TO TRENCHING OR EXCAVATION FOR ANY PIPE OR STRUCTURES, TO DETERMINE ACTUAL LOCATIONS, SIZE AND MATERIAL. THE CONTRACTOR SHALL MAKE THE APPROPRIATE PROVISION FOR PROTECTION OF SAID FACILITIES. THE CONTRACTOR SHALL NOTIFY ONE CALL AT 8-1-1 (WASHINGTON11.COM) AND ARRANGE FOR FIELD LOCATION OF EXISTING FACILITIES BEFORE CONSTRUCTION.



1/19/23
 JOB NUMBER:
19-349
 SHEET NAME:
AL-01
 SHT **9** OF **23**

24x36
 Jan 19, 2023 11:56am User: adance
 C:\Projects\19-349 (Lang) From: WSP\BKS\Drawings\19-349-AL.dwg
 © 2023 BLUELINE



BLUELINE

25 CENTRAL WAY, SUITE 400,
KIRKLAND, WA 98033
P: 425.216.4051 F: 425.216.4052
WWW.THEBLUELINEGROUP.COM

SCALE:
AS NOTED

PROJECT MANAGER:
BRETT K PUDISTS, PE

PROJECT ENGINEER:
DENE KUZARO

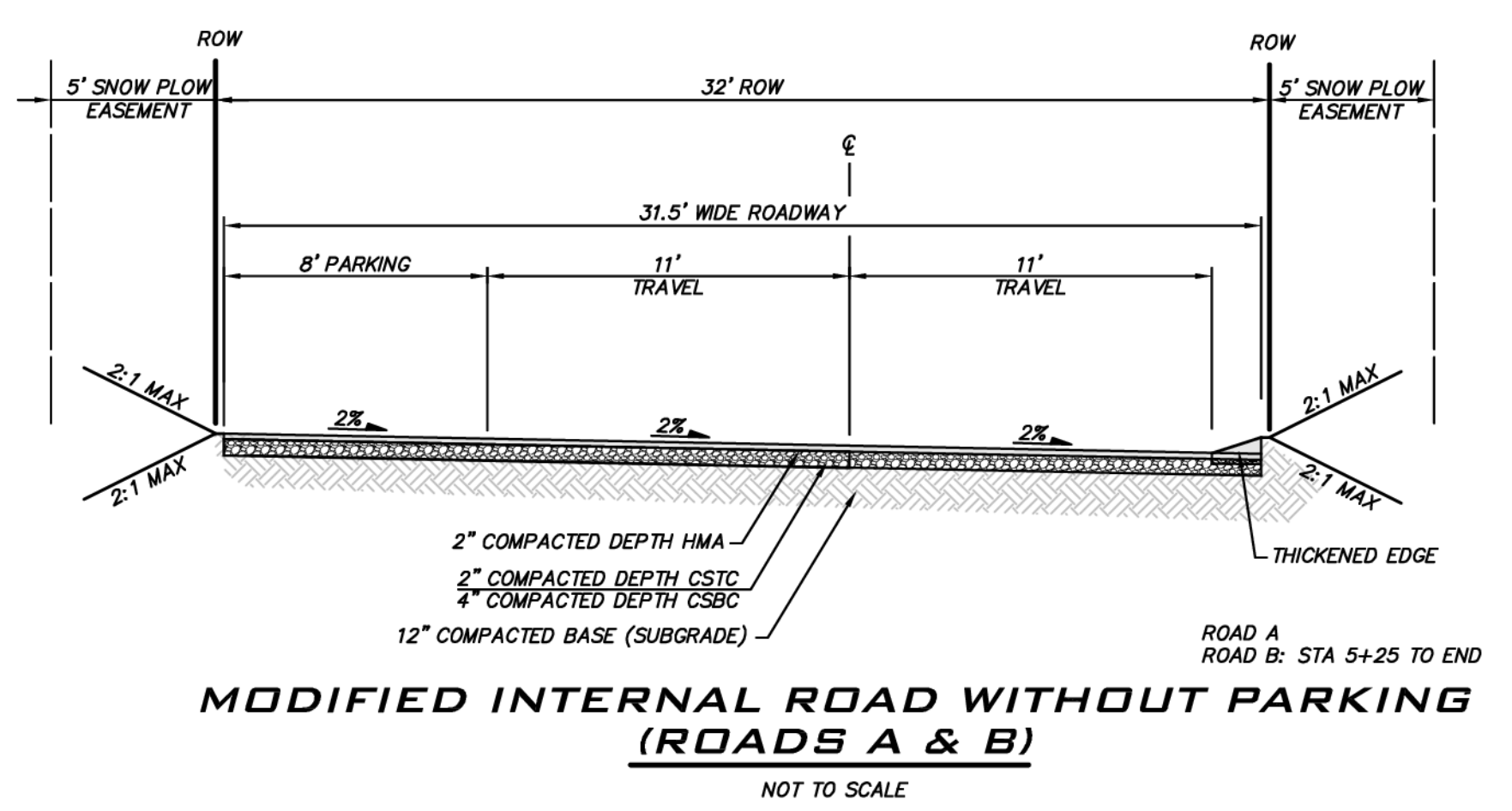
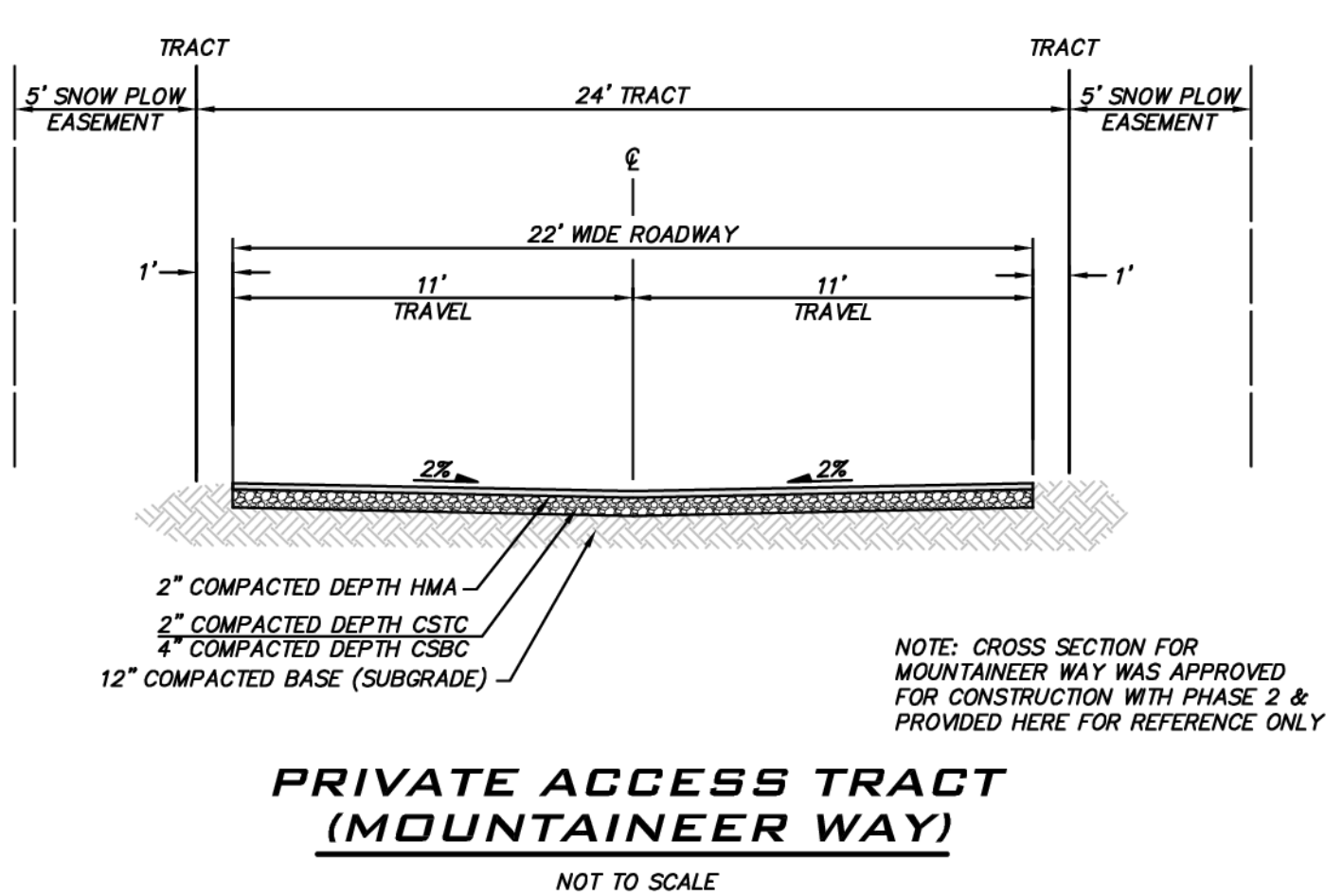
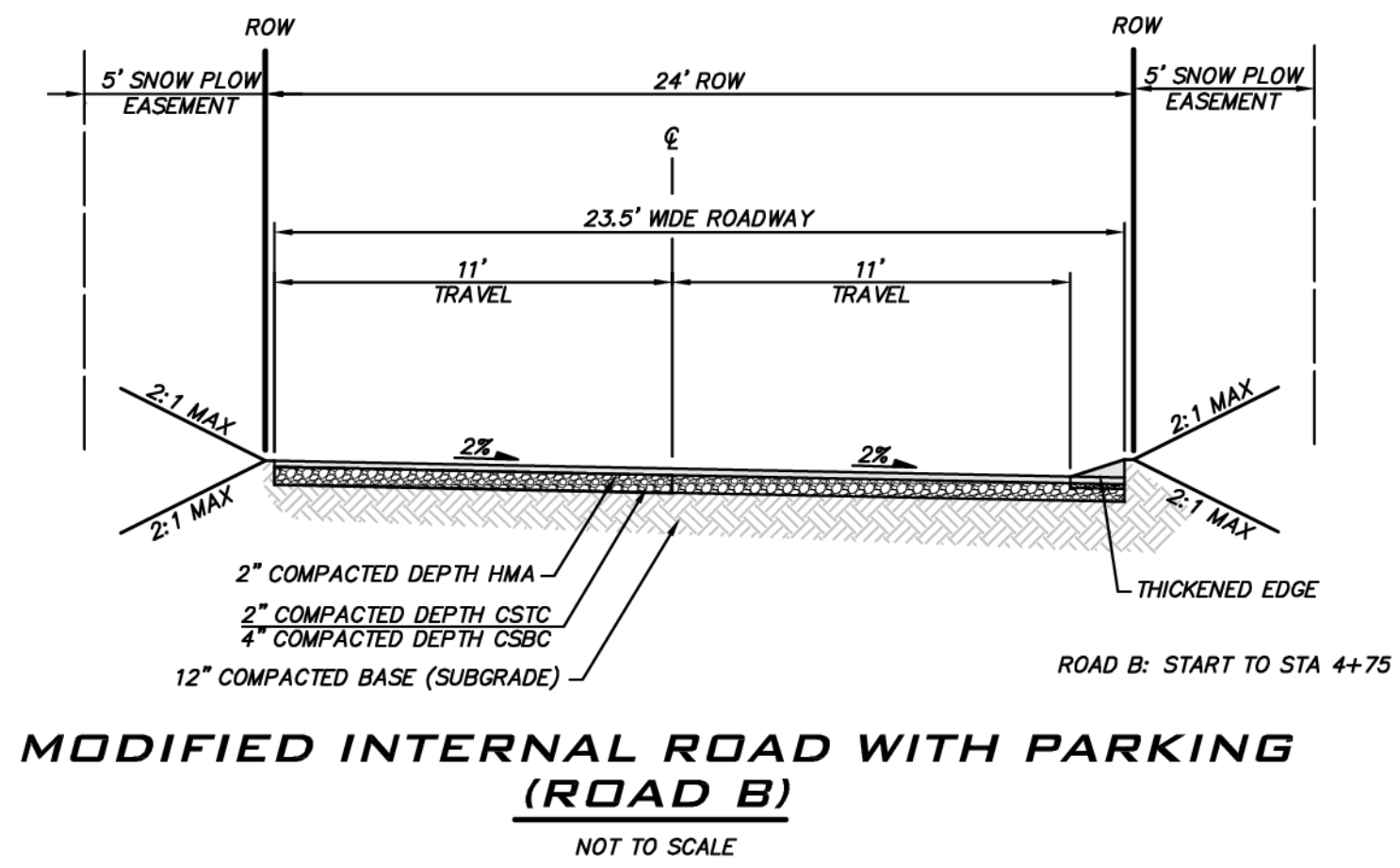
DESIGNER:
AARON LANCE

ISSUE DATE:
1/19/2023

REVISIONS

NO	DATE	BY

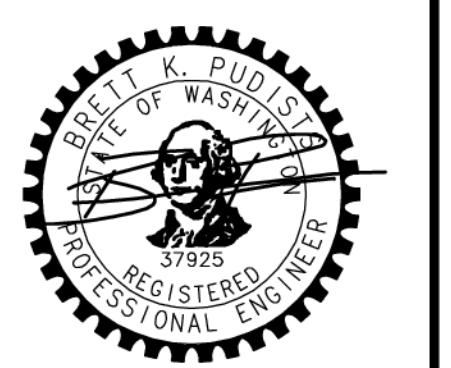
ROAD SECTIONS
CITY HEIGHTS
 PHASE 3
 PRELIM CLEARING, GRADING & INFRASTRUCTURE PLANS
 CITY OF GLE ELUM
 WASHINGTON



- ROAD SECTION NOTES**
- ALL DEPTHS ARE MINIMUM COMPATED DEPTHS.
 - SUBGRADE TO BE PREPARED BASED ON RECOMMENDATIONS FROM GEOTECH DURING CONSTRUCTION.
 - ROADS TO BE PUBLIC UNLESS OTHERWISE NOTED.

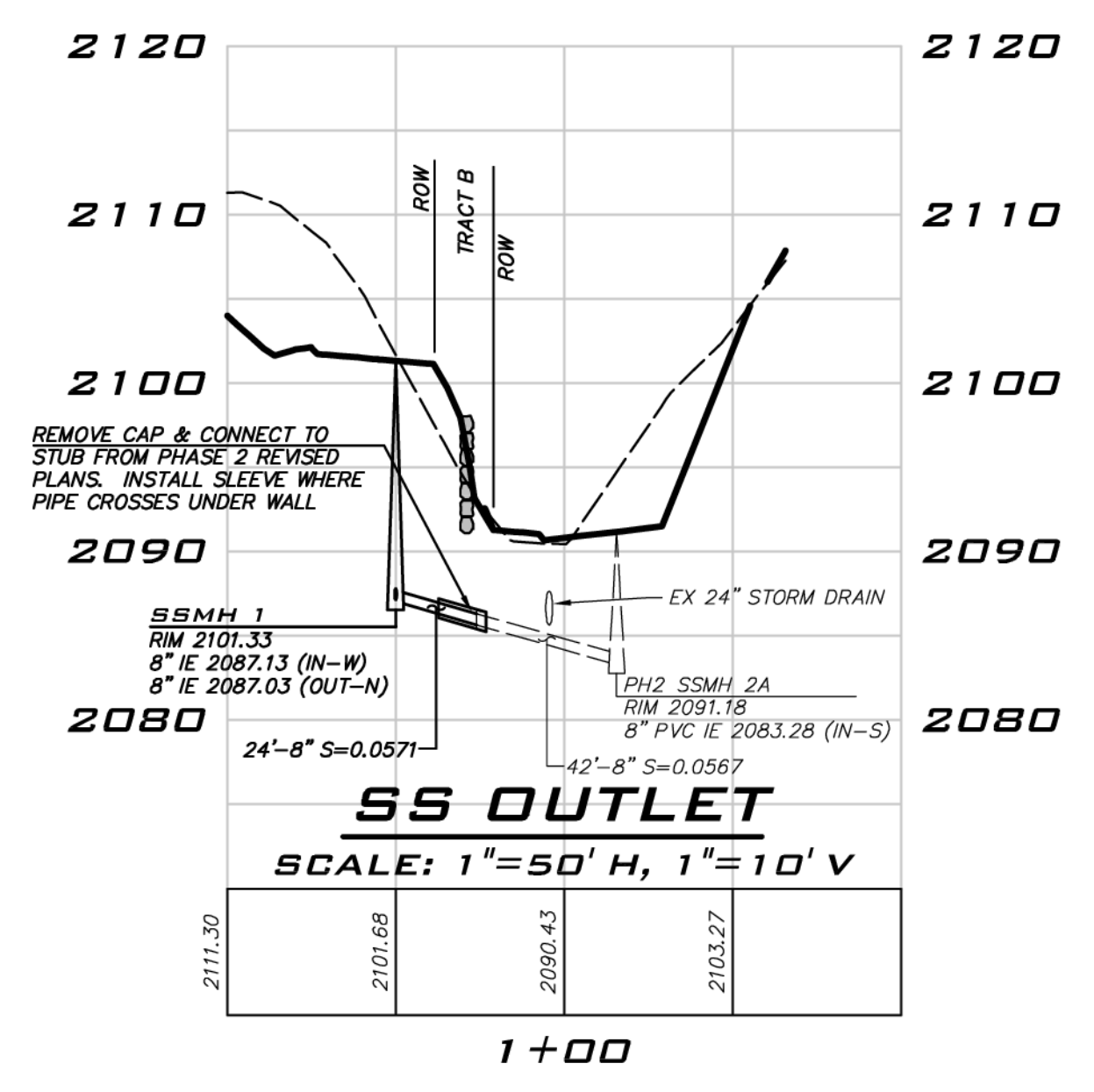
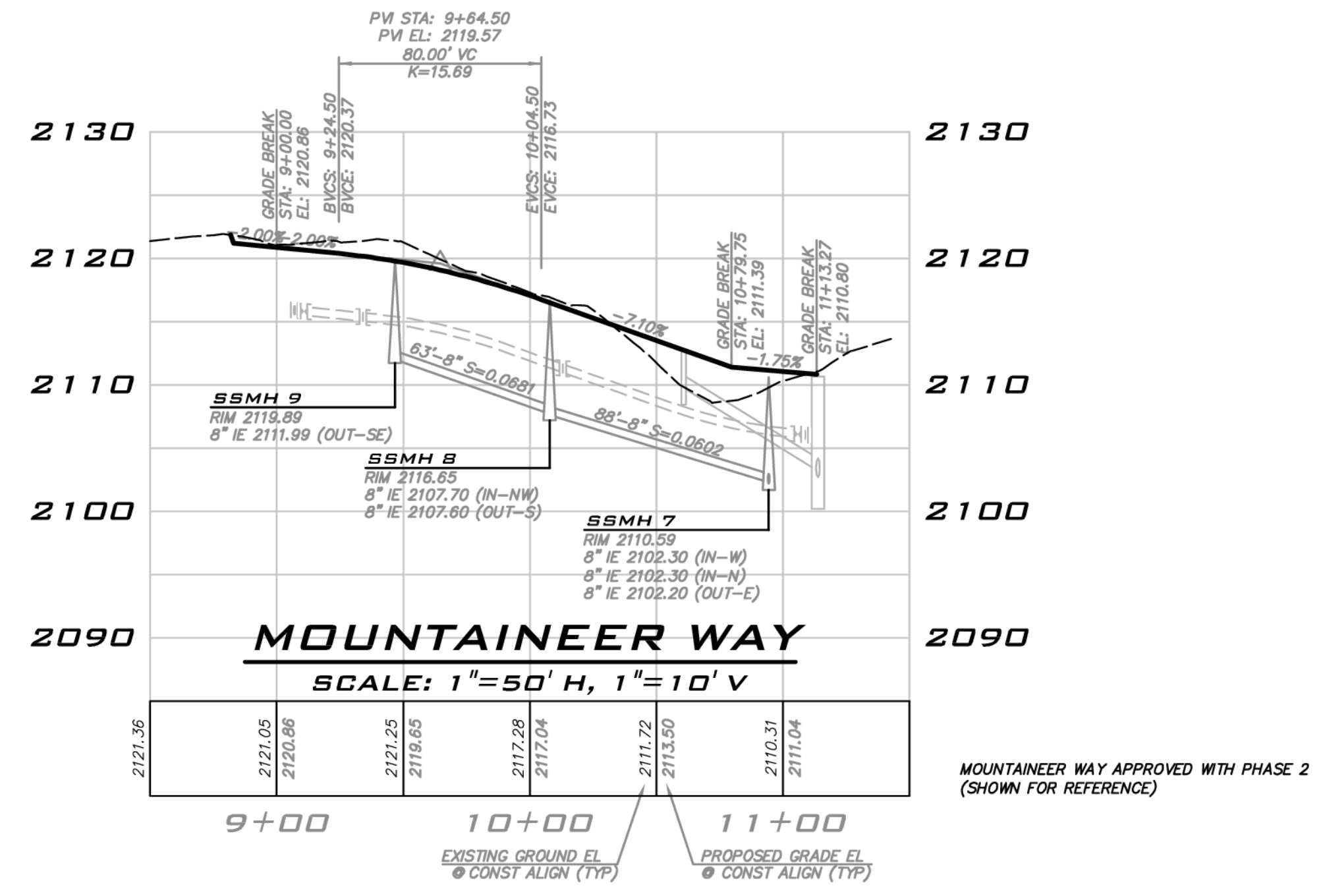
EXISTING UTILITY NOTE

EXISTING UTILITIES ARE SHOWN IN THE APPROXIMATE LOCATION. THERE IS NO GUARANTEE THAT ALL UTILITY LINES ARE SHOWN, OR THAT THE LOCATION, SIZE AND MATERIAL IS ACCURATE. THE CONTRACTOR SHALL UNCOVER ALL INDICATED PIPING WHERE CROSSING, INTERFERENCES, OR CONNECTIONS OCCUR PRIOR TO TRENCHING OR EXCAVATION FOR ANY PIPE OR STRUCTURES, TO DETERMINE ACTUAL LOCATIONS, SIZE AND MATERIAL. THE CONTRACTOR SHALL MAKE THE APPROPRIATE PROVISION FOR PROTECTION OF SAID FACILITIES. THE CONTRACTOR SHALL NOTIFY ONE CALL AT 8-1-1 (WASHINGTON11.COM) AND ARRANGE FOR FIELD LOCATION OF EXISTING FACILITIES BEFORE CONSTRUCTION.



1/19/23
 JOB NUMBER:
19-349
 SHEET NAME:
RD-01

SCALE:
 AS NOTED
 PROJECT MANAGER:
BRETT K PUDISTS, PE
 PROJECT ENGINEER:
DENE KUZARO
 DESIGNER:
AARON LANCE
 ISSUE DATE:
1/19/2023

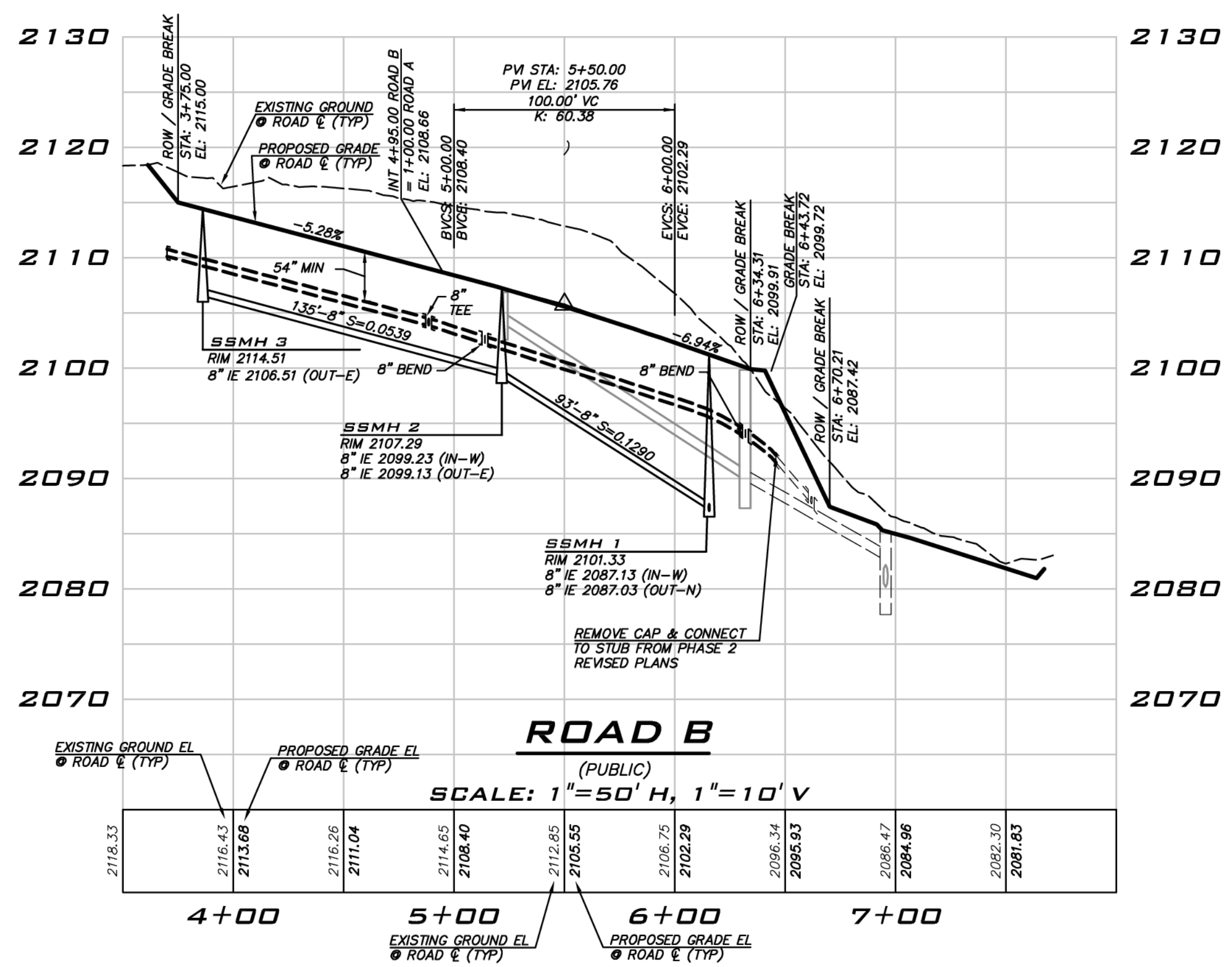
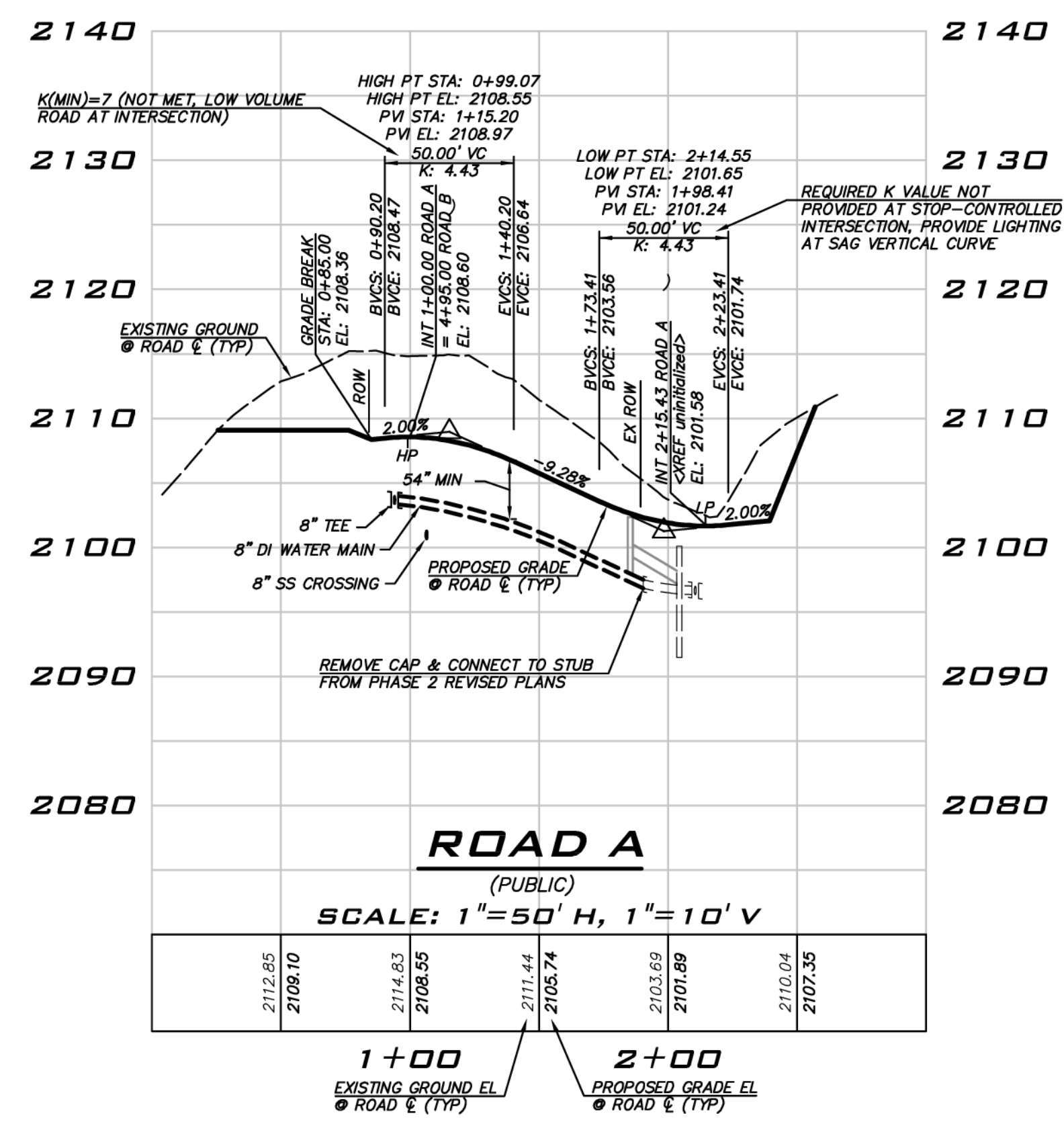


NO	DATE	BY	REVISIONS

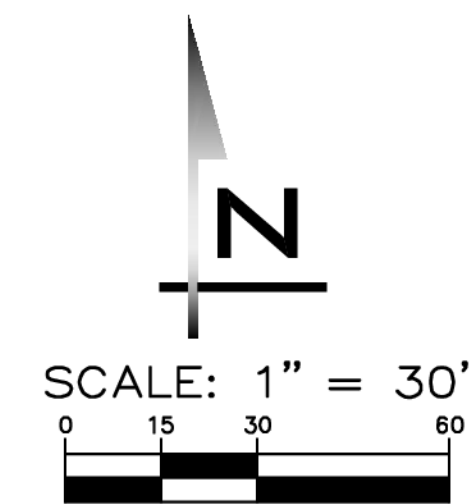
WATER & SEWER PROFILE
CITY HEIGHTS
PHASE 3
PRELIM CLEARING, GRADING & INFRASTRUCTURE PLANS
CITY OF GLE ELUM WASHINGTON



1/19/23
 JOB NUMBER:
19-349
 SHEET NAME:
SP-01
 SHT **14** OF **23**



EXISTING UTILITY NOTE
 EXISTING UTILITIES ARE SHOWN IN THE APPROXIMATE LOCATION. THERE IS NO GUARANTEE THAT ALL UTILITY LINES ARE SHOWN, OR THAT THE LOCATION, SIZE AND MATERIAL IS ACCURATE. THE CONTRACTOR SHALL UNCOVER ALL INDICATED PIPING WHERE CROSSING, INTERFERENCES, OR CONNECTIONS OCCUR PRIOR TO TRENCHING OR EXCAVATION FOR ANY PIPE OR STRUCTURES, TO DETERMINE ACTUAL LOCATIONS, SIZE AND MATERIAL. THE CONTRACTOR SHALL MAKE THE APPROPRIATE PROVISION FOR PROTECTION OF SAID FACILITIES. THE CONTRACTOR SHALL NOTIFY ONE CALL AT 8-1-1 (WASHINGTON11.COM) AND ARRANGE FOR FIELD LOCATION OF EXISTING FACILITIES BEFORE CONSTRUCTION.



BLUELINE
 25 CENTRAL WAY, SUITE 400,
 KIRKLAND, WA 98033
 P: 425.216.4051 F: 425.216.4052
 WWW.THEBLUELINEGROUP.COM

SCALE: AS NOTED
 PROJECT MANAGER:
BRETT K PUDISTS, PE
 PROJECT ENGINEER:
DENE KUZARO
 DESIGNER:
AARON LANCE
 ISSUE DATE:
1/19/2023

NO	DATE	BY

OPEN SPACE PLAN
CITY HEIGHTS
PHASE 3
 PRELIM CLEARING, GRADING & INFRASTRUCTURE PLANS
 WASHINGTON
 CITY OF GLE ELUM

LEGEND

PRIVATE OPEN SPACE

OPEN SPACE REQUIREMENT

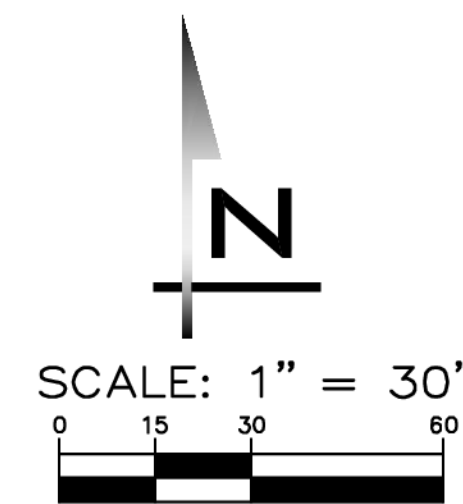
- (DA APPENDIX B, ZONING #3 AND APPENDIX H #1): AT LEAST 35% OF THE PROPERTY (APPROXIMATELY 125 ACRES INCLUSIVE OF AREAS IN THE POWER LINE EASEMENTS) SHALL BE DEDICATED TO OPEN SPACE, NATURAL AREAS, PARKS, RECREATION AREAS, VILLAGE GREENS, COMMONS, OR PUBLIC ASSEMBLY AREAS.
- SEE SHEET SI-01 FOR SUMMARY OF AREAS IN OPEN SPACE, CRITICAL AREAS AND AMENITY AREAS PROVIDED FOR THE CURRENT PHASE.

EXISTING UTILITY NOTE

EXISTING UTILITIES ARE SHOWN IN THE APPROXIMATE LOCATION. THERE IS NO GUARANTEE THAT ALL UTILITY LINES ARE SHOWN, OR THAT THE LOCATION, SIZE AND MATERIAL IS ACCURATE. THE CONTRACTOR SHALL UNCOVER ALL INDICATED PIPING WHERE CROSSING, INTERFERENCES, OR CONNECTIONS OCCUR PRIOR TO TRENCHING OR EXCAVATION FOR ANY PIPE OR STRUCTURES, TO DETERMINE ACTUAL LOCATIONS, SIZE AND MATERIAL. THE CONTRACTOR SHALL MAKE THE APPROPRIATE PROVISION FOR PROTECTION OF SAID FACILITIES. THE CONTRACTOR SHALL NOTIFY ONE CALL AT 8-1-1 (WASHINGTON811.COM) AND ARRANGE FOR FIELD LOCATION OF EXISTING FACILITIES BEFORE CONSTRUCTION.

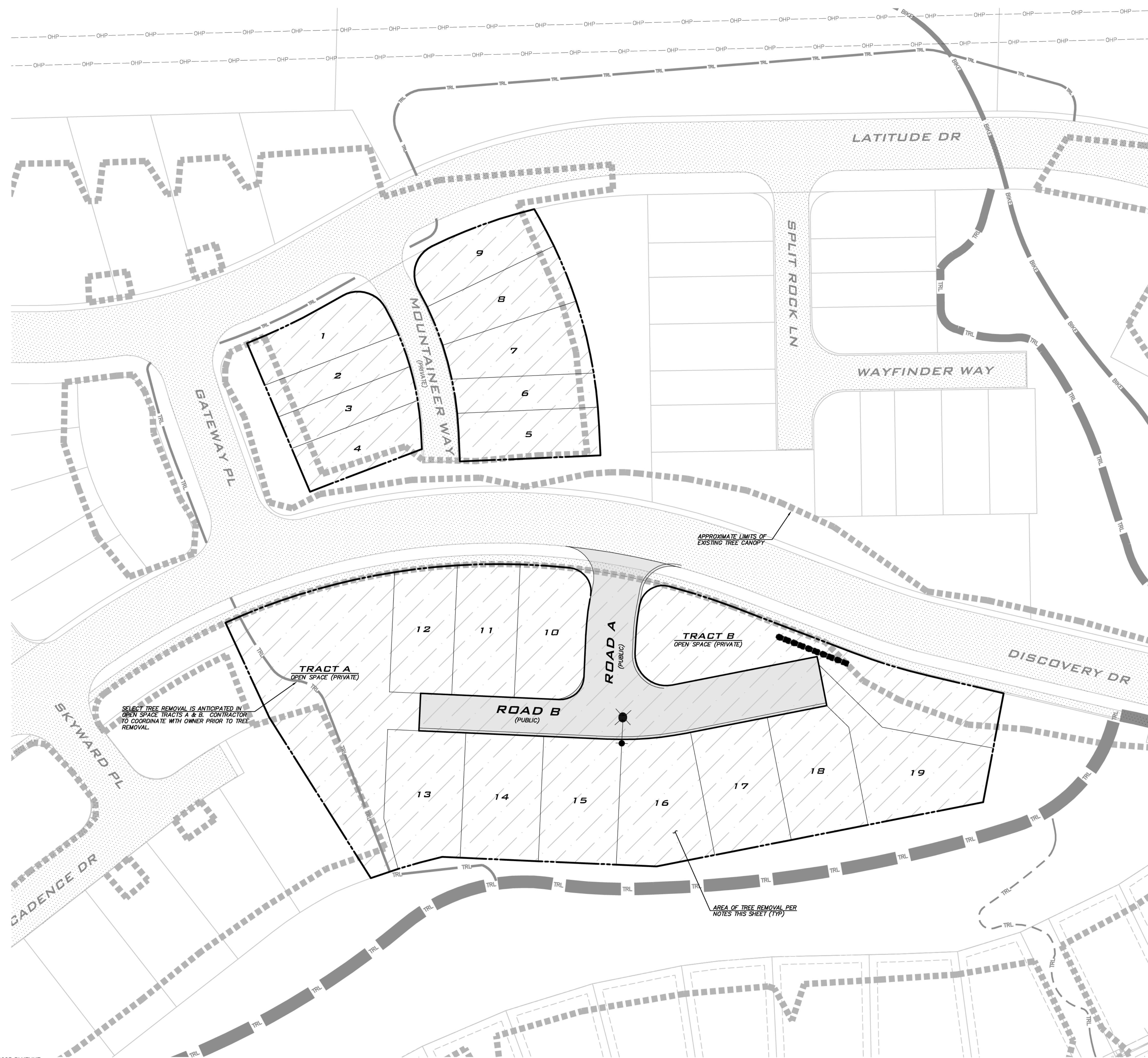
1/19/23
 JOB NUMBER:
19-349
 SHEET NAME:
OS-01
 SHT **16** OF **23**

24x36
 Jan 19, 2023 11:50am User: adance
 C:\Projects\19-349 (City of Gle Elum)\Drawings\OS.dwg
 © 2023 BLUELINE



BLUELINE
 25 CENTRAL WAY, SUITE 400,
 KIRKLAND, WA 98033
 P: 425.216.4051 F: 425.216.4052
 WWW.THEBLUELINEGROUP.COM

SCALE:
 AS NOTED
 PROJECT MANAGER:
 BRETT K PUDISTS, PE
 PROJECT ENGINEER:
 DENE KUZARO
 DESIGNER:
 AARON LANCE
 ISSUE DATE:
 1/19/2023



SELECT TREE REMOVAL IS ANTICIPATED IN OPEN SPACE TRACTS A & B. CONTRACTOR TO COORDINATE WITH OWNER PRIOR TO TREE REMOVAL.

APPROXIMATE LIMITS OF EXISTING TREE CANOPY

AREA OF TREE REMOVAL PER NOTES THIS SHEET (TYP)

LEGEND

AREA OF TREE REMOVAL (TREES TO BE REMOVED AT APPLICANT'S DISCRETION IN ACCORDANCE WITH DA)

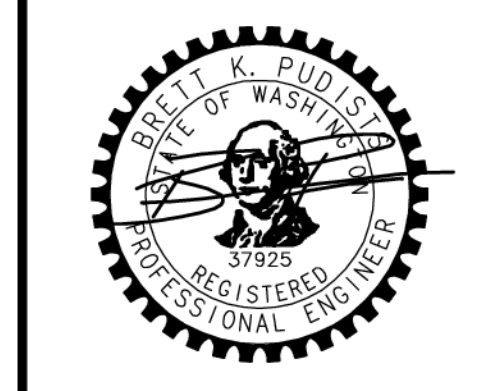
- TREE NOTES**
- (DA APPENDIX B, SUBDIVISIONS #3): TREES IN OPEN SPACE OR PLANNED PUBLIC AREA WITH A DIAMETER IN EXCESS OF 30" DBH SHALL NOT BE REMOVED PRIOR TO CREATION OF A VEGETATION MANAGEMENT AND REVEGETATION AND PLANTING PLAN COMPLETED BY A CERTIFIED ARBORIST
 - SELECT TREES LESS THAN 30" CALIPER INCH MAY BE REMOVED WITHIN OPEN SPACE AREAS SHOWN AS AREA OF TREE RETENTION AS DEEMED NECESSARY BY DEVELOPER PER THE DA AGREEMENT (DA APPENDIX B, SUBDIVISIONS #3).
 - (DA APPENDIX B-ZONING #9) "SIGNIFICANT TREES" PER (CEMC 17.64.040) PERTAINS ONLY TO TREES WITHIN WETLANDS, FISH AND WILDLIFE CONSERVATION AREAS, FREQUENTLY FLOODED AREAS AND GEOLOGICALLY HAZARDOUS AREAS. SUCH TREES MAY BE REMOVED FROM THESE AREAS WHERE REMOVALS ARE MITIGATED THROUGH RELOCATION OR REVEGETATION PURSUANT TO A CRITICAL AREA MITIGATION PLAN.

EXISTING UTILITY NOTE

EXISTING UTILITIES ARE SHOWN IN THE APPROXIMATE LOCATION. THERE IS NO GUARANTEE THAT ALL UTILITY LINES ARE SHOWN, OR THAT THE LOCATION, SIZE AND MATERIAL IS ACCURATE. THE CONTRACTOR SHALL UNCOVER ALL INDICATED PIPING WHERE CROSSING, INTERFERENCES, OR CONNECTIONS OCCUR PRIOR TO TRENCHING OR EXCAVATION FOR ANY PIPE OR STRUCTURES, TO DETERMINE ACTUAL LOCATIONS, SIZE AND MATERIAL. THE CONTRACTOR SHALL MAKE THE APPROPRIATE PROVISION FOR PROTECTION OF SAID FACILITIES. THE CONTRACTOR SHALL NOTIFY ONE CALL AT 8-1-1 (WASHINGTON11.COM) AND ARRANGE FOR FIELD LOCATION OF EXISTING FACILITIES BEFORE CONSTRUCTION.

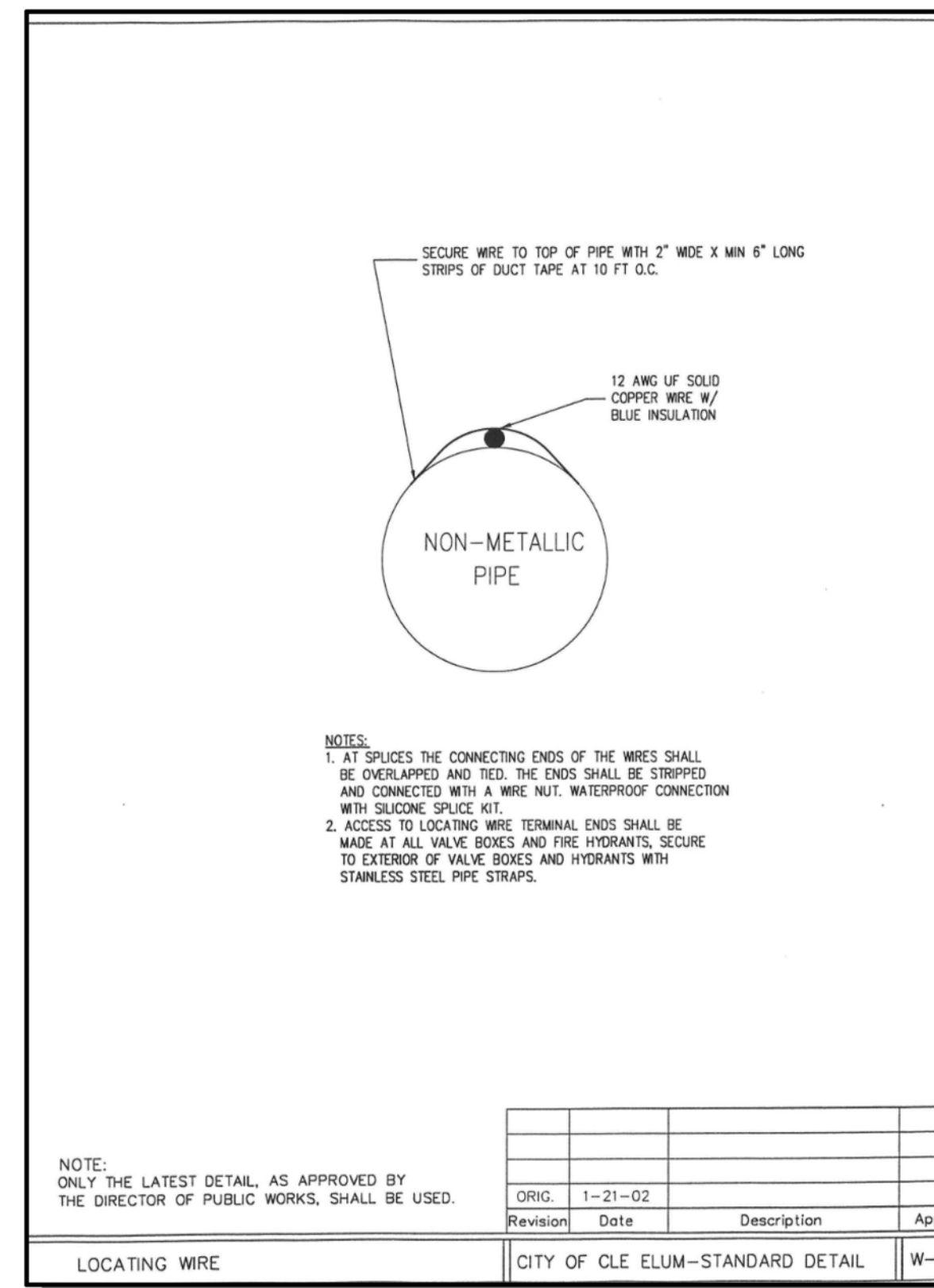
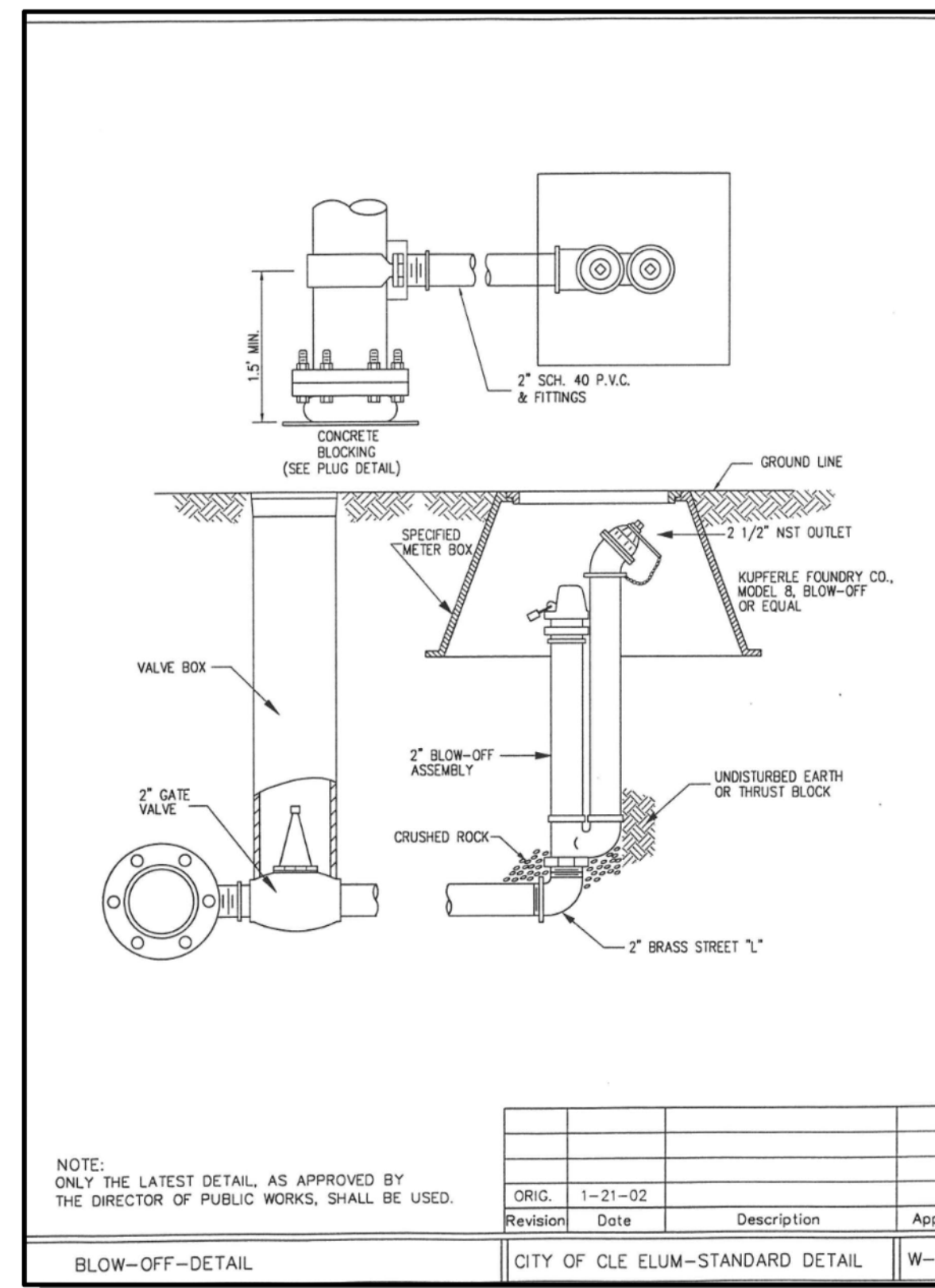
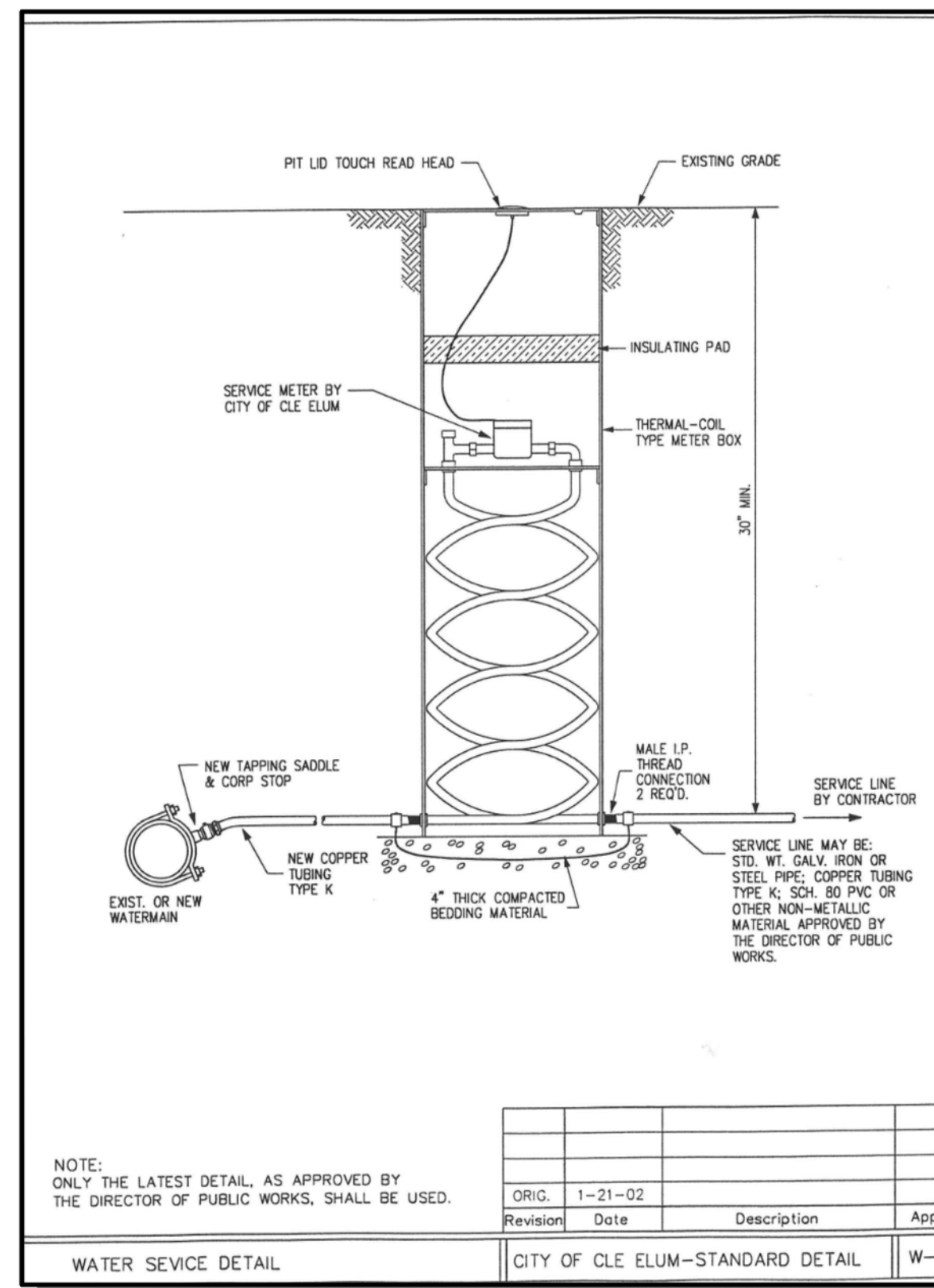
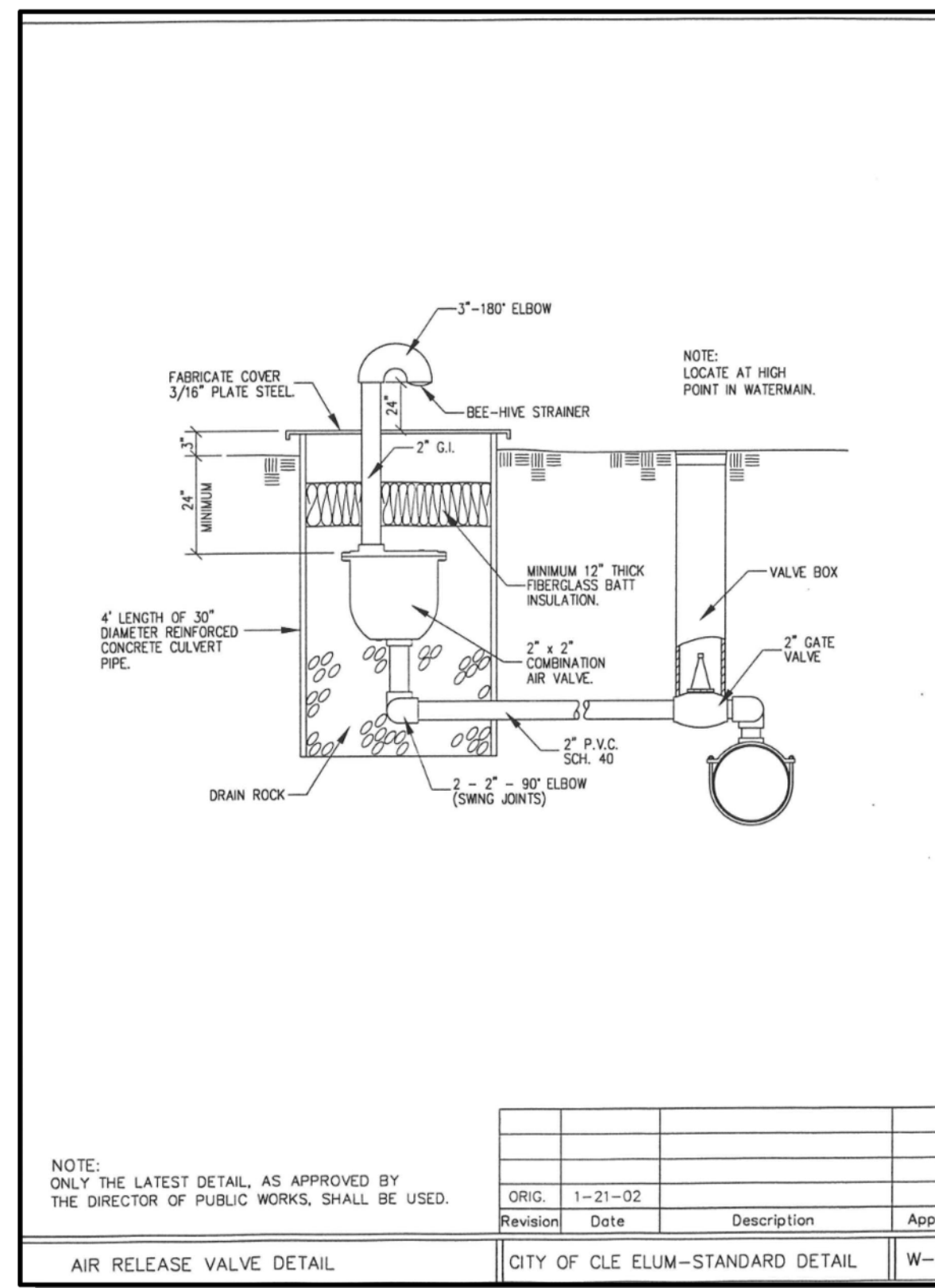
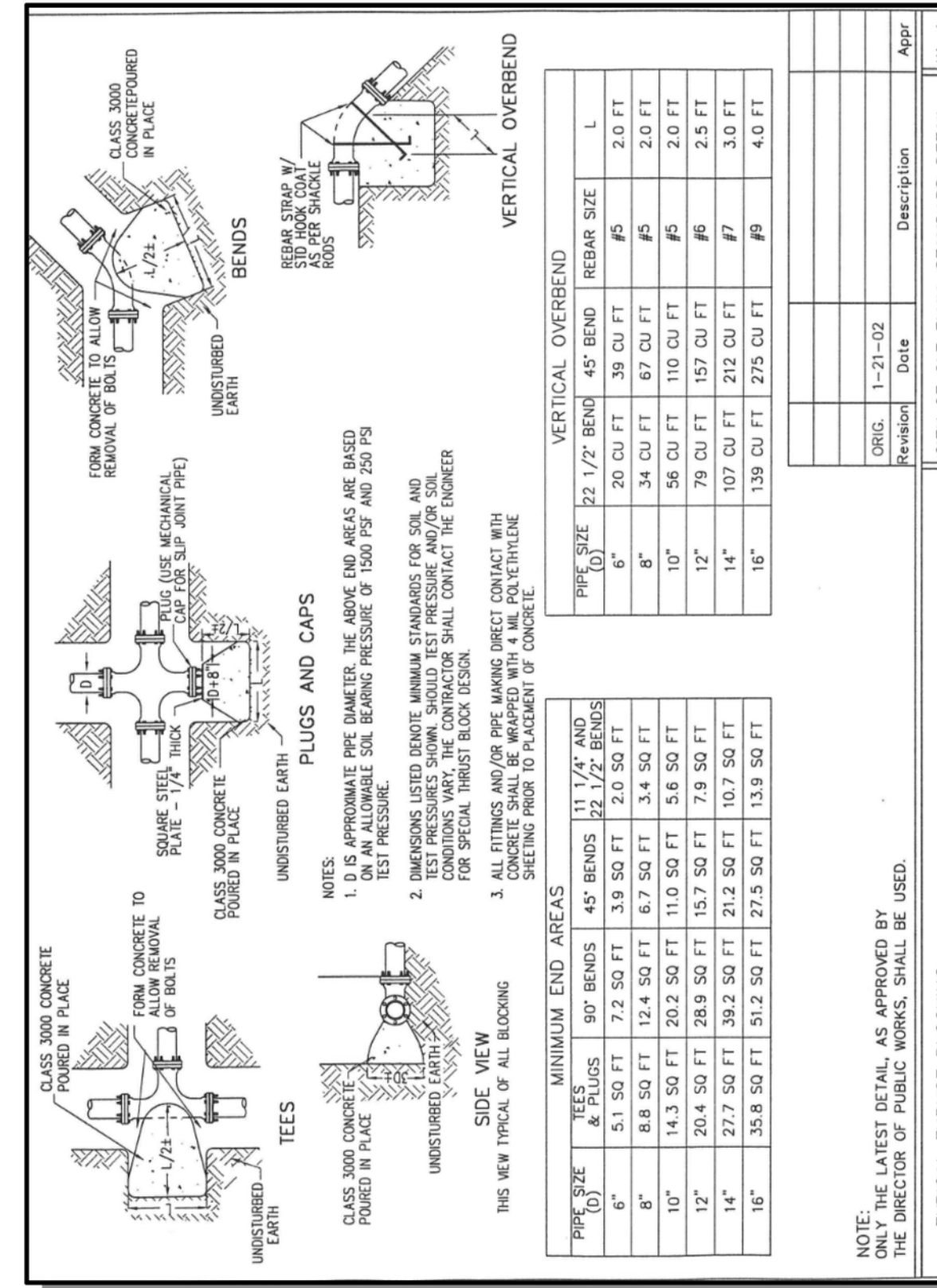
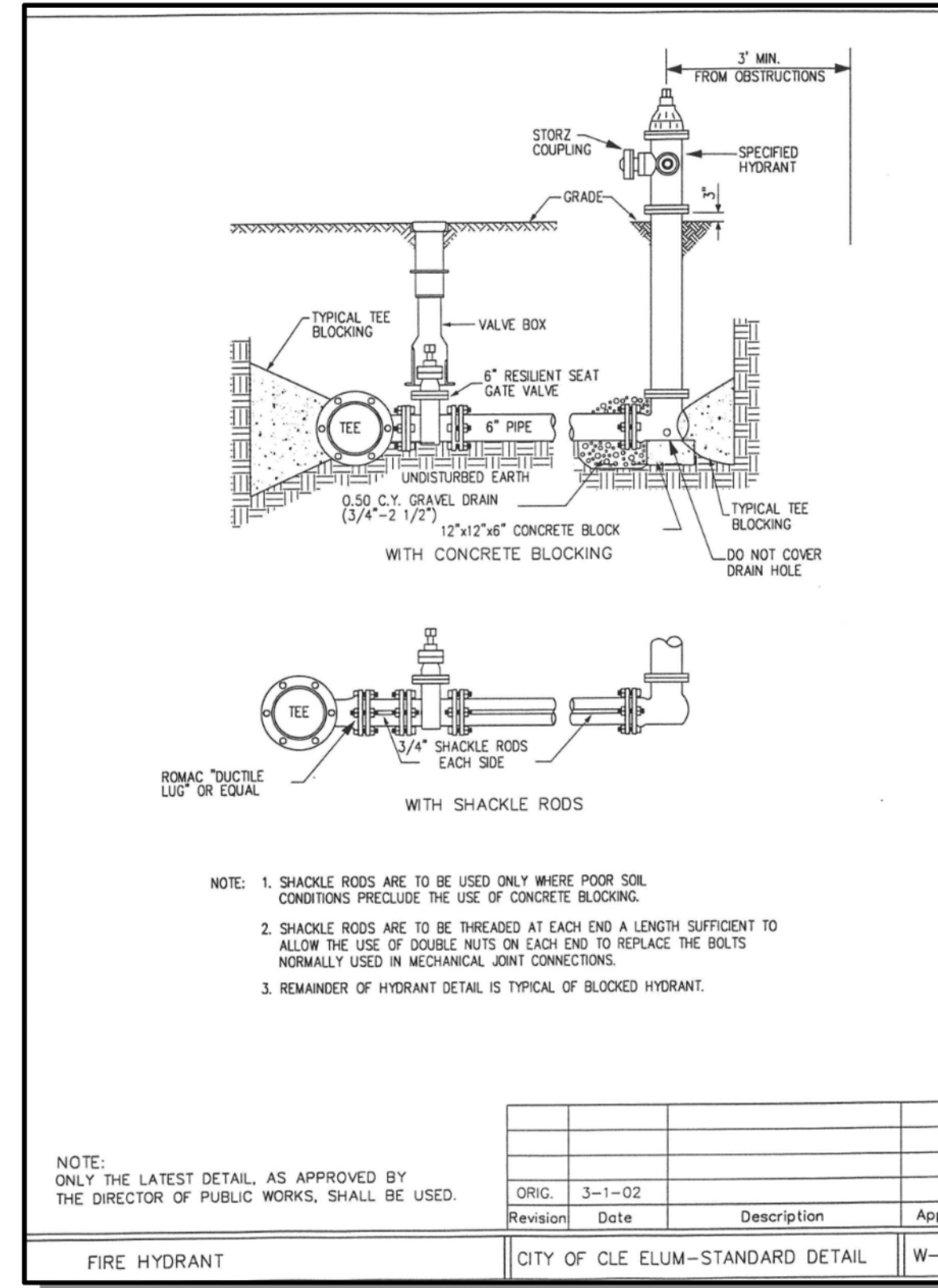
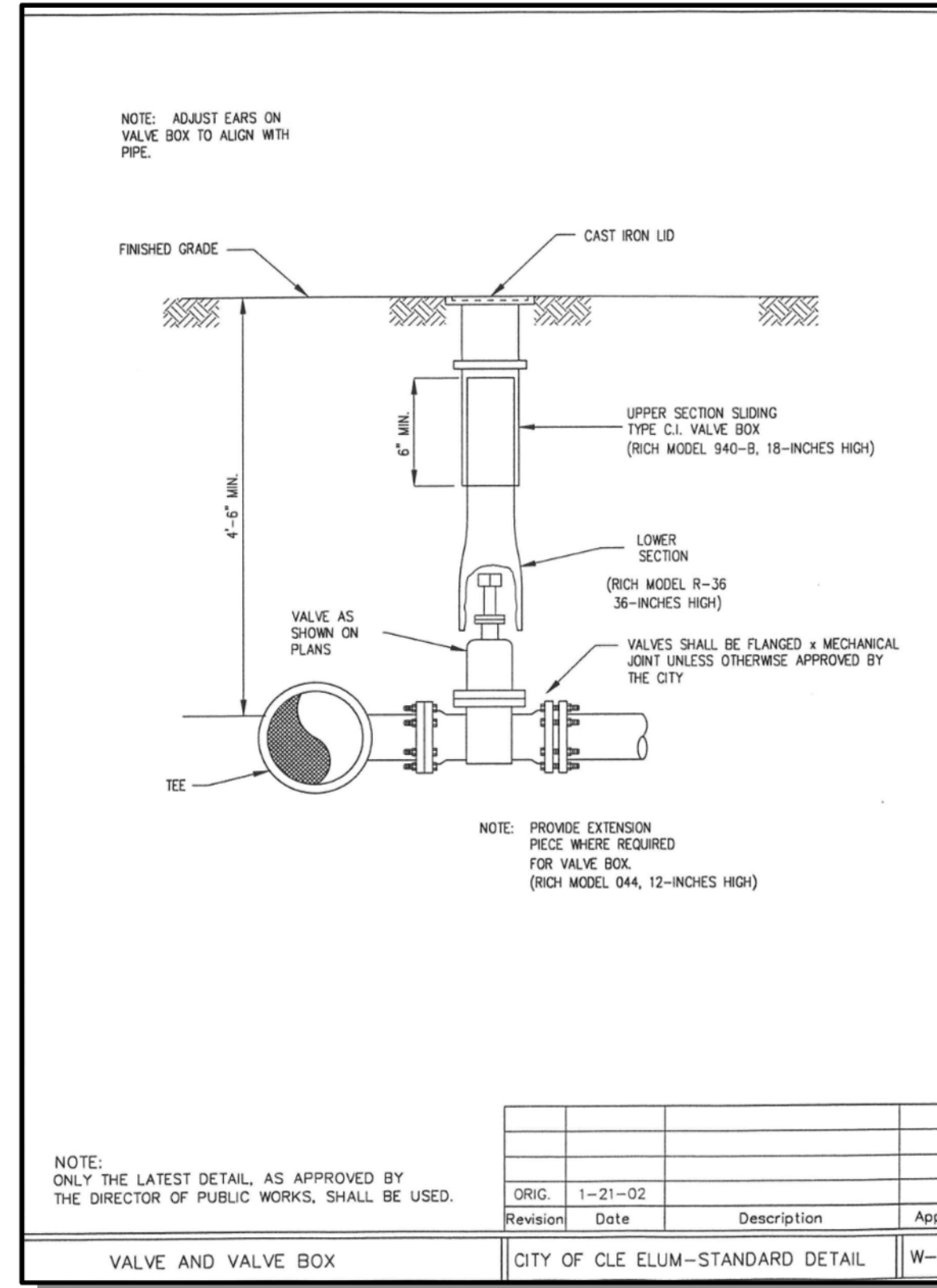
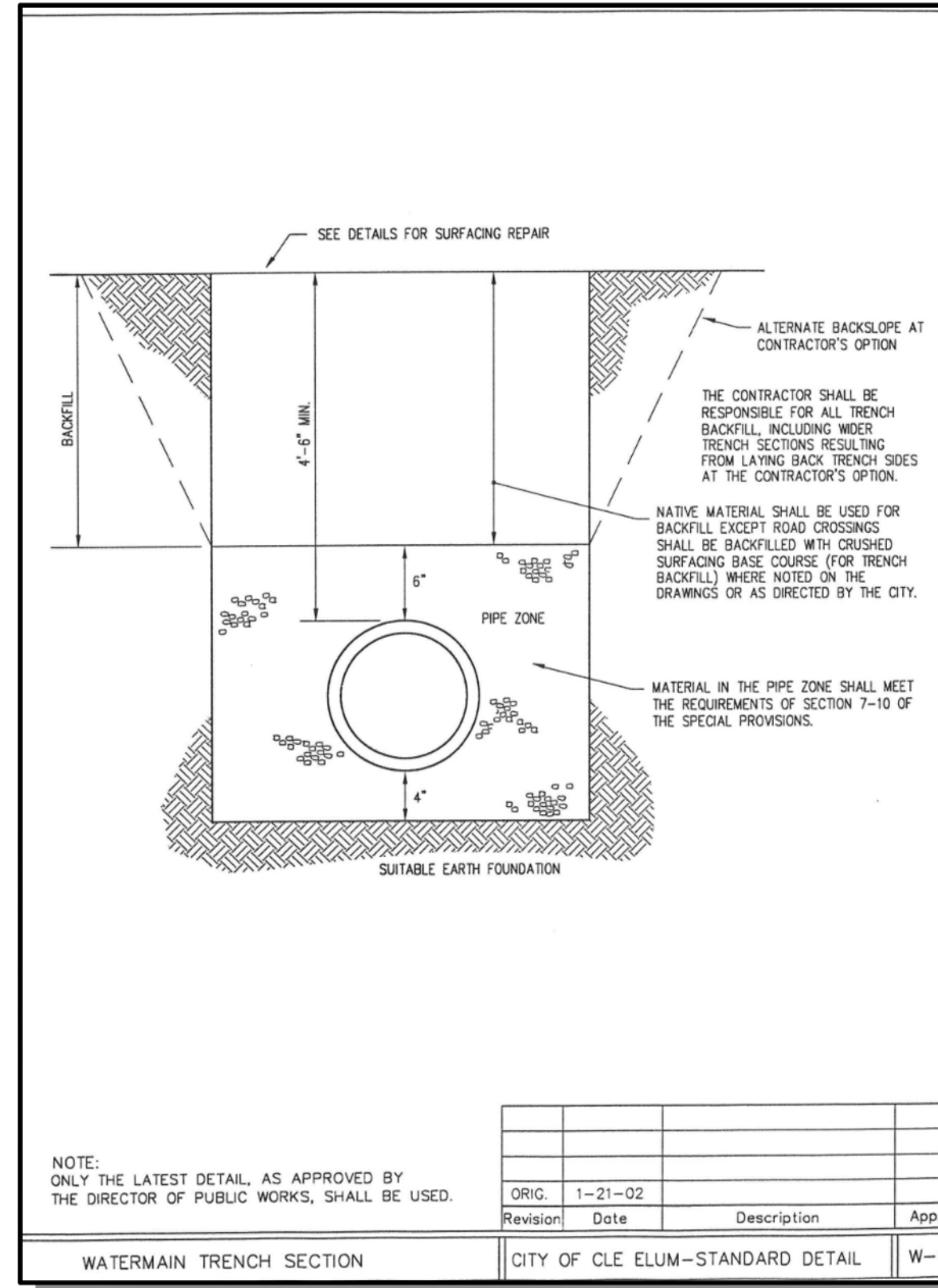
NO	DATE	BY	REVISIONS

TREE PRESERVATION & CLEARING PLAN
CITY HEIGHTS PHASE 3
 PRELIM CLEARING, GRADING & INFRASTRUCTURE PLANS
 WASHINGTON
 CITY OF GLE ELUM



1/19/23
 JOB NUMBER:
19-349
 SHEET NAME:
TR-01
 SHT **17** OF **23**

24x36
 Jan 19, 2023 11:50am User: alance
 C:\Projects\19-349 (City Heights) (Final)\Map\PS1_City19-349-TR.dwg



EXISTING UTILITY NOTE
 EXISTING UTILITIES ARE SHOWN IN THE APPROXIMATE LOCATION. THERE IS NO GUARANTEE THAT ALL UTILITY LINES ARE SHOWN, OR THAT THE LOCATION, SIZE AND MATERIAL IS ACCURATE. THE CONTRACTOR SHALL UNCOVER ALL INDICATED PIPING WHERE CROSSING, INTERFERENCES, OR CONNECTIONS OCCUR PRIOR TO TRENCHING OR EXCAVATION FOR ANY PIPE OR STRUCTURES. TO DETERMINE ACTUAL LOCATIONS, SIZE AND MATERIAL, THE CONTRACTOR SHALL MAKE THE APPROPRIATE PROMISION FOR PROTECTION OF SAID FACILITIES. THE CONTRACTOR SHALL NOTIFY ONE CALL AT 8-1-1 (WASHINGTON11.COM) AND ARRANGE FOR FIELD LOCATION OF EXISTING FACILITIES BEFORE CONSTRUCTION.

BLUELINE
 25 CENTRAL WAY, SUITE 400, KIRKLAND, WA 98033
 P: 425.216.4051 F: 425.216.4052
 WWW.THEBLUELINEGROUP.COM

SCALE: AS NOTED
 PROJECT MANAGER: BRETT K PUDISTIS, PE
 PROJECT ENGINEER: DENÉ KUZARO
 DESIGNER: AARON LANCE
 ISSUE DATE: 1/19/2023

NO	DATE	BY	REVISIONS

DETAILS
CITY HEIGHTS
PHASE 3
 PRELIM CLEARING, GRADING & INFRASTRUCTURE PLANS
 CITY OF CLE ELUM WASHINGTON

1/19/23
 JOB NUMBER: 19-349
 SHEET NAME: DT-01
 SHT 19 OF 23



BLUELINE

25 CENTRAL WAY, SUITE 400,
KIRKLAND, WA 98033
P: 425.216.4051 F: 425.216.4052
WWW.THEBLUELINEGROUP.COM

SCALE:
AS NOTED

PROJECT MANAGER:
BRETT K PUDISTIS, PE

PROJECT ENGINEER:
DENE KUZARO

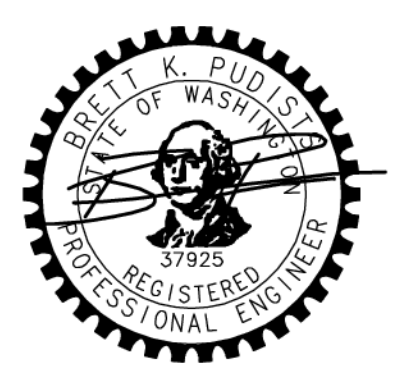
DESIGNER:
AARON LANCE

ISSUE DATE:
1/19/2023

REVISIONS

NO	DATE	BY

DETAILS
CITY HEIGHTS
PHASE 3
PRELIM CLEARING, GRADING & INFRASTRUCTURE PLANS
WASHINGTON
CITY OF GLE ELUM



1/19/23

JOB NUMBER:
19-349

SHEET NAME:
DT-04

SHT **22** OF **23**

FRAME AND VANED GRATE

RECTANGULAR ADJUSTMENT SECTION

PRECAST BASE SECTION

ALTERNATIVE PRECAST BASE SECTION

PIPE MATERIAL	MAXIMUM INSIDE DIAMETER (INCHES)
REINFORCED OR PLAN CONCRETE	12"
ALL METAL PIPE	15"
GROUP # (STD SPEC. SECT. 9-06.20)	12"
SOLID WALL PVC (STD SPEC. SECT. 5-06.1210)	15"
PROFILE WALL PVC (STD SPEC. SECT. 5-06.1220)	15"

* CORRUGATED POLYETHYLENE STORM SEWER PIPE

NOTES

- As acceptable alternatives to the rebar shown in the PRECAST BASE SECTION floors (placed according to the standard specifications), or wire mesh having a minimum area of 0.72 square inches per foot shall be used with the minimum required rebar shown in the ALTERNATIVE PRECAST BASE SECTION. Wire mesh shall not be placed in the knockouts.
- The knockout diameter shall not be greater than 20" (in). Knockouts shall have a wall thickness of 2" (in) minimum to 2.5" (in) maximum. Provide a 1.5" (in) minimum gap between the knockout wall and the outside of the pipe. After the pipe is installed, fill the gap with joint mortar in accordance with Standard Specification Section 9-04.3.
- The maximum depth from the finished grade to the lowest pipe invert shall be 5' (ft).
- The frame and grate may be installed with the flange down, or integrally cast into the adjustment section with flange up.
- The Precast Base Section may have a rounded floor, and the walls may be sloped at a rate of 1:24 or steeper.
- The opening shall be measured at the top of the Precast Base Section.
- All pickup holes shall be grouted full after the basin has been placed.

Julia Anderson 2020.09.01 07:52:50 -07'00'

CATCH BASIN TYPE 1
STANDARD PLAN B-S-20-03
SHEET 1 OF 1 SHEET

APPROVED FOR PUBLICATION
Roark, Steven 2023.01.19 10:58:58 AM PST
DATE: 01/19/2023 10:58:58 AM PST
STATE: WASHINGTON
Washington State Department of Transportation

REINFORCED FILL ROCKERY DETAIL
CITY HEIGHTS
CLE ELUM, WASHINGTON

EXPOSED HEIGHT IN FEET	LAYER NO.	REINFORCEMENT TYPE	REINFORCEMENT LENGTH	HEIGHT (FT)
4 FT	1	NO REINFORCEMENT REQUIRED		
	2	MRARI HP 570	4.0 FT	0.5
6 FT	1	MRARI HP 570	4.0 FT	2.5
	2	MRARI HP 570	5.0 FT	2.5
8 FT	1	MRARI HP 570	4.0 FT	4.5
	2	MRARI HP 570	6.0 FT	4.5
	3	MRARI HP 570	6.0 FT	4.5
10 FT	1	MRARI HP 570	4.0 FT	8.5
	2	MRARI HP 570	6.0 FT	8.5
	3	MRARI HP 570	6.0 FT	8.5
	4	MRARI HP 570	6.0 FT	8.5

NOTE: GEODRID ELEVATION TOLERANCE ± 3" (ALL DIMENSIONS ARE IN FEET)

NOTES:

- ROCKERY CONSTRUCTION SHALL BE COMPLETED IN ACCORDANCE WITH THE ASSOCIATION OF ROCKERY (AR) CONTRACTORS GUIDELINES.
- ROCK USED MUST MEET THE REQUIREMENTS FOR ROCK QUALITY SPECIFIED IN SECTIONS 9-13.1(1) OF THE WSDOT STANDARDS SPECIFICATIONS (2004).
- ALL CAP ROCKS MUST BE SECURE AND NOT ABLE TO BE DISLOOGED BY HAND.
- REFER TO CIVIL GRADING DRAWINGS FOR WALL ALIGNMENT AND ELEVATIONS.
- GEOTEXTILE LENGTH MEASURED FROM BACK OF DRAINAGE COLUMN.
- GEOTEXTILE SHALL BE INSTALLED ON HORIZONTAL SURFACE OF COMPACTED STRUCTURAL FILL AT ELEVATIONS SHOWN ON SCHEDULE.
- GEOTEXTILE SHALL BE PULLED TIGHT BEHIND WALL. STAKE END OF GEOTEXTILE AS REQUIRED TO MAINTAIN TENSION BEFORE COVERING WITH STRUCTURAL FILL.
- PROTECT GEOTEXTILE FROM CONSTRUCTION DAMAGE PER MANUFACTURERS SPECIFICATIONS. CONSTRUCTION EQUIPMENT SHALL NOT TRAVEL DIRECTLY ON GEOTEXTILE. ANY GEOTEXTILE THAT IS DAMAGED SHALL BE REPLACED WITH NEW GEOTEXTILE AT CONTRACTOR'S EXPENSE.
- GEOTEXTILE SHALL BE AS SHOWN ON SCHEDULE. ALL GEOTEXTILE SHALL BE CLEARLY IDENTIFIED AND LABELED IN THE FIELD. ANY UNMARKED ROLLS OR PORTIONS THEREOF THAT CANNOT BE IDENTIFIED SHALL NOT BE USED IN WALL CONSTRUCTION.
- GEOTEXTILE MUST BE CONTINUOUS ALONG THE BACK OF THE WALL, INCLUDING CURVES AND CORNERS.
- ALL STRUCTURAL FILL TO BE PLACED AND COMPACTED PER GEOTECHNICAL REPORT PREPARED BY TERRA ASSOCIATES, INC. PROJECT NO. T-8504-1, DATED JUNE 9, 2020. STRUCTURAL FILL IN REINFORCED ZONE SHALL BE GRANULAR MATERIAL WITH A MAXIMUM AGGREGATE SIZE OF 3 INCHES AND A MAXIMUM OF 30 PERCENT PASSING THE NO. 200 SIEVE (FINES CONTENT) BASED ON THE 3/4" GRAVEL FRACTION.

Terra Associates, Inc.
Consultants in Geotechnical Engineering
Geology and Environmental Earth Sciences

REINFORCED FILL ROCKERY DETAIL
CITY HEIGHTS
CLE ELUM, WASHINGTON

Proj. No. T-8504-1 Date: SEPT 2021 Figure 4

CUT ROCKERY DETAIL
CITY HEIGHTS
CLE ELUM, WASHINGTON

EXPOSED HEIGHT IN FEET	LAYER NO.	REINFORCEMENT TYPE	REINFORCEMENT LENGTH	HEIGHT (FT)
4 FT	1	NO REINFORCEMENT REQUIRED		
	2	MRARI HP 570	4.0 FT	0.5
6 FT	1	MRARI HP 570	4.0 FT	2.5
	2	MRARI HP 570	5.0 FT	2.5
8 FT	1	MRARI HP 570	4.0 FT	4.5
	2	MRARI HP 570	6.0 FT	4.5
	3	MRARI HP 570	6.0 FT	4.5
10 FT	1	MRARI HP 570	4.0 FT	8.5
	2	MRARI HP 570	6.0 FT	8.5
	3	MRARI HP 570	6.0 FT	8.5
	4	MRARI HP 570	6.0 FT	8.5

NOTE: GEODRID ELEVATION TOLERANCE ± 3" (ALL DIMENSIONS ARE IN FEET)

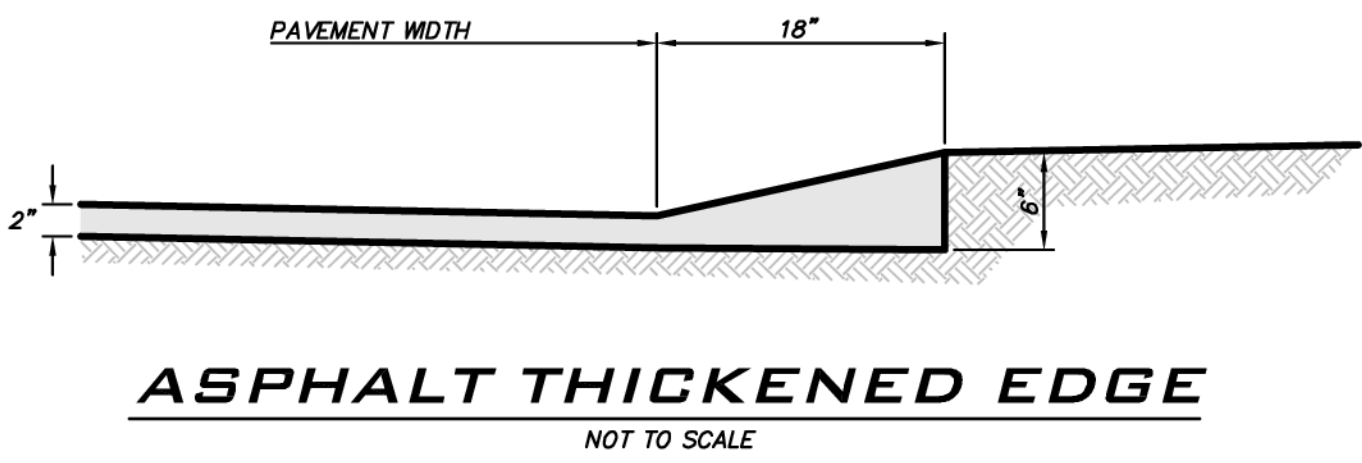
ROCKERY NOTES:

- REFER TO CIVIL GRADING DRAWINGS FOR WALL ALIGNMENTS AND ELEVATIONS.
- ROCKERY CONSTRUCTION SHALL BE COMPLETED IN ACCORDANCE WITH THE ASSOCIATION OF ROCKERY CONTRACTORS GUIDELINES.
- ROCK USED MUST MEET THE REQUIREMENTS FOR ROCK QUALITY SPECIFIED IN SECTION 9-13.1(1) OF THE WSDOT STANDARDS SPECIFICATIONS (2004).
- ALL CAP ROCKS MUST BE SECURE AND NOT ABLE TO BE DISLOOGED BY HAND.

Terra Associates, Inc.
Consultants in Geotechnical Engineering
Geology and Environmental Earth Sciences

CUT ROCKERY DETAIL
CITY HEIGHTS
CLE ELUM, WASHINGTON

Proj. No. T-8504-1 Date: SEPT 2021 Figure 5



EXISTING UTILITY NOTE

EXISTING UTILITIES ARE SHOWN IN THE APPROXIMATE LOCATION. THERE IS NO GUARANTEE THAT ALL UTILITY LINES ARE SHOWN, OR THAT THE LOCATION, SIZE AND MATERIAL IS ACCURATE. THE CONTRACTOR SHALL UNCOVER ALL INDICATED PIPING WHERE CROSSING, INTERFERENCES, OR CONNECTIONS OCCUR PRIOR TO TRENCHING OR EXCAVATION FOR ANY PIPE OR STRUCTURES. TO DETERMINE ACTUAL LOCATIONS, SIZE AND MATERIAL, THE CONTRACTOR SHALL MAKE THE APPROPRIATE PROVISION FOR PROTECTION OF SAID FACILITIES. THE CONTRACTOR SHALL NOTIFY ONE CALL AT 8-1-1 (WASHINGTON11.COM) AND ARRANGE FOR FIELD LOCATION OF EXISTING FACILITIES BEFORE CONSTRUCTION.