







14/42

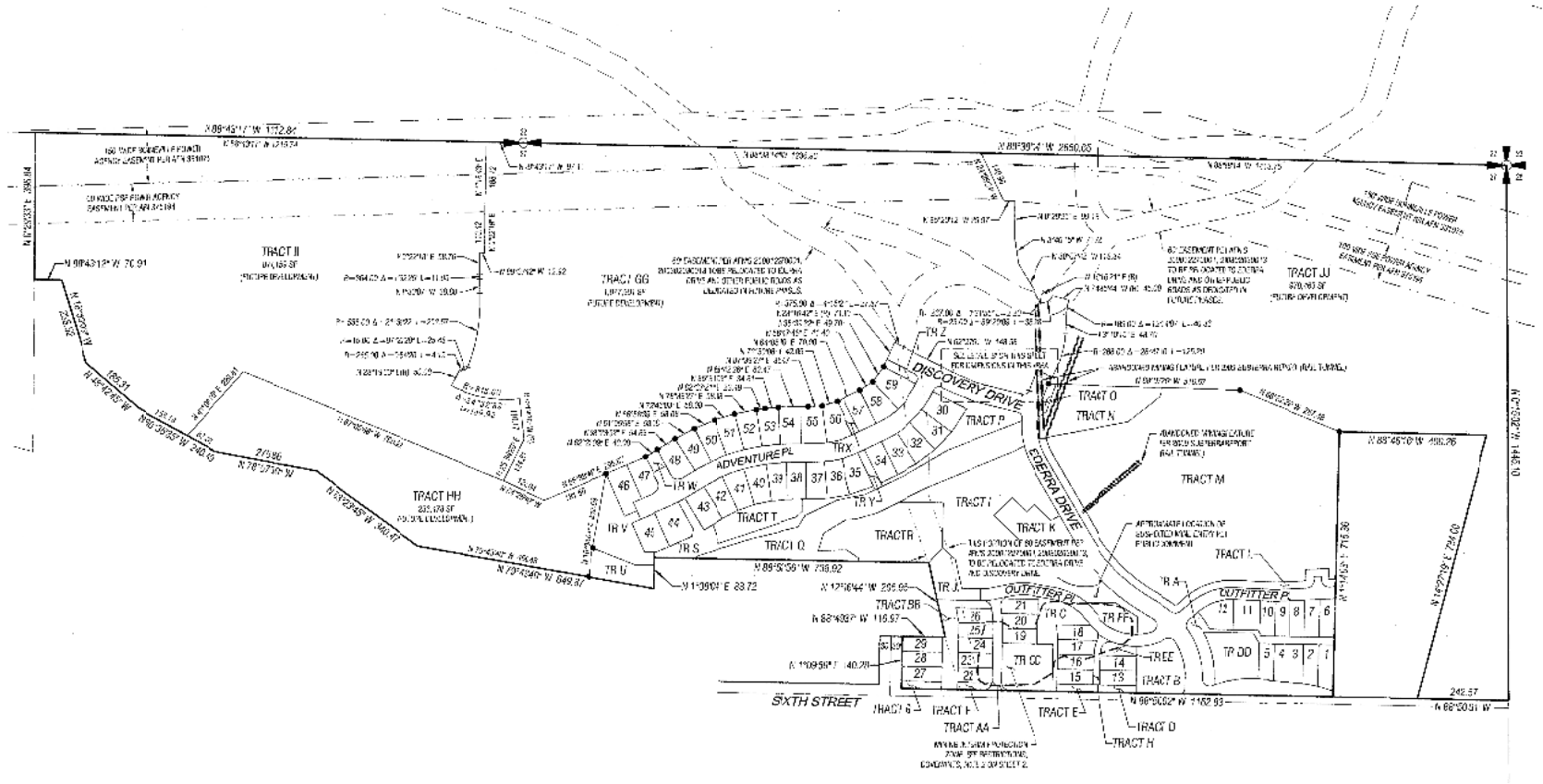
01/19/2023 11:12:55 AM V: 14 P: 42 26230180412  
MAGILMAN SURVEYING PLLC  
1111 1/2 AVENUE SOUTH  
WILSON, WASHINGTON 98072



# CITY HEIGHTS - PHASE I

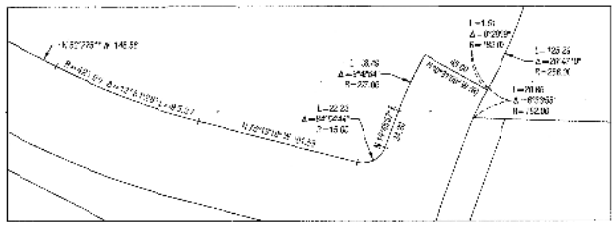
NE1/4 NW1/4 & SE1/4 NE1/4 & SW1/4 NE1/4 & NW1/4 NE1/4 & NE1/4 NE1/4 IN SEC. 27, T. 20 N., R. 15 E., W.M.  
KITKITAS COUNTY, WASHINGTON

VOL/PG  
14/42



BOUNDARY AND TRACT GG, HH, II, JJ DETAIL

DETAIL B  
SCALE 1" = 20'



SCALE: 1" = 200'



- LEGEND
- 20' X 20' NEIGHBORLY PLATTING OFF STATION NO. 3514-4558 7/4/31.
  - ✕ BALDWIN SURVEY STATION NO. 3514-4558 TO BE SET

**MG** MEAD GILMAN  
LAND SURVEYORS

P.O. BOX 285, WOODVILLE, WA 98072  
425.486.1252 | WWW.MEADGILMAN.COM

PROJ. NO. 22022 SHEET 4 OF 10

14/42





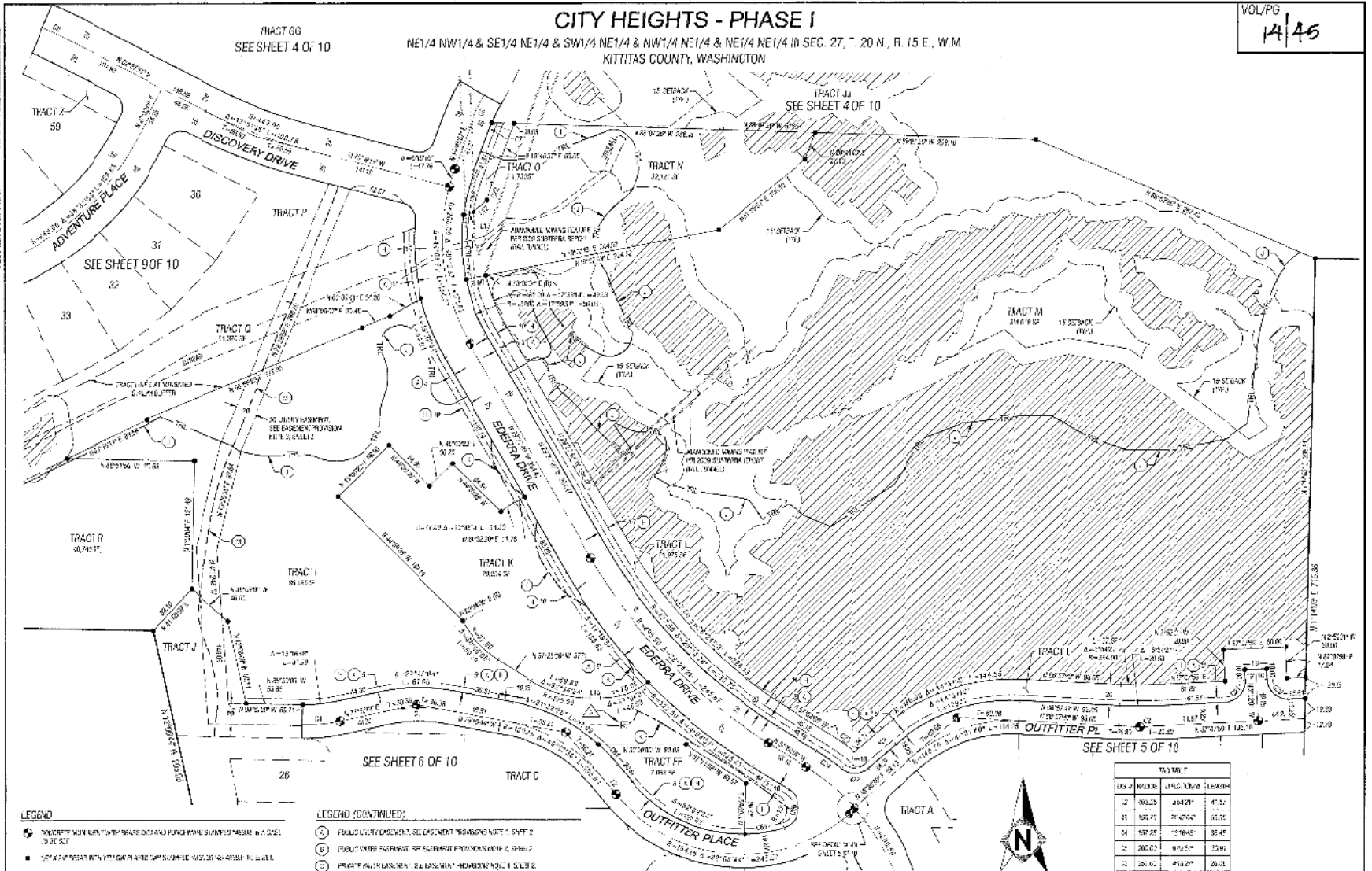
MAPS

01/19/2023 11:12:55 AM V. 14 P. 48 202301180912  
CITY HEIGHTS PHASE I SURVEY REVISIONS PLAT 14/45  
14/45

# CITY HEIGHTS - PHASE I

NE1/4 NW1/4 & SE1/4 NE1/4 & SW1/4 NE1/4 & NW1/4 NE1/4 & NE1/4 NE1/4 IN SEC. 27, T. 20 N., R. 15 E., W.M.  
KITITAS COUNTY, WASHINGTON

VOL/PG  
14/45



### LEGEND

- CONCRETE MONUMENT WITH BEARING AND PLUNGE MARK SHOWN AS BEARING AND PLUNGE TO BE SET
- ✱ CORNER MARK WITH BEARING AND PLUNGE MARK SHOWN AS BEARING AND PLUNGE TO BE SET
- ✱ MONUMENT WITH BEARING AND PLUNGE MARK TO BE SET
- SURVEY POINT LOCATION OF SET STATION
- △ APPROXIMATE LOCATION OF SURFACE MONUMENT WHERE NECESSARY
- ▨ APPROXIMATE AREA OF SET STATION IN L. CASINO PLANS. SEE SET STATION IN WORK SHEET FOR SETTING AND PLUNGE TO BE SET

### LEGEND (CONTINUED)

- ① PUBLIC UTILITY EASEMENT, SEE EASEMENT PROVISIONS NOTE 2, SHEET 2
- ② PUBLIC UTILITY EASEMENT, SEE EASEMENT PROVISIONS NOTE 2, SHEET 2
- ③ PRIVATE UTILITY EASEMENT, SEE EASEMENT PROVISIONS NOTE 2, SHEET 2
- ④ PUBLIC UTILITY EASEMENT, SEE EASEMENT PROVISIONS NOTE 2, SHEET 2
- ⑤ PRIVATE UTILITY EASEMENT, SEE EASEMENT PROVISIONS NOTE 2, SHEET 2
- ⑥ PRIVATE UTILITY EASEMENT, SEE EASEMENT PROVISIONS NOTE 2, SHEET 2
- ⑦ PUBLIC UTILITY EASEMENT, SEE EASEMENT PROVISIONS NOTE 2, SHEET 2
- ⑧ PRIVATE UTILITY EASEMENT, SEE EASEMENT PROVISIONS NOTE 2, SHEET 2
- ⑨ PUBLIC UTILITY EASEMENT, SEE EASEMENT PROVISIONS NOTE 2, SHEET 2
- ⑩ PRIVATE UTILITY EASEMENT, SEE EASEMENT PROVISIONS NOTE 2, SHEET 2
- ⑪ PUBLIC UTILITY EASEMENT, SEE EASEMENT PROVISIONS NOTE 2, SHEET 2
- ⑫ PRIVATE UTILITY EASEMENT, SEE EASEMENT PROVISIONS NOTE 2, SHEET 2
- ⑬ PUBLIC UTILITY EASEMENT, SEE EASEMENT PROVISIONS NOTE 2, SHEET 2
- ⑭ PRIVATE UTILITY EASEMENT, SEE EASEMENT PROVISIONS NOTE 2, SHEET 2
- ⑮ PUBLIC UTILITY EASEMENT, SEE EASEMENT PROVISIONS NOTE 2, SHEET 2
- ⑯ PRIVATE UTILITY EASEMENT, SEE EASEMENT PROVISIONS NOTE 2, SHEET 2
- ⑰ PUBLIC UTILITY EASEMENT, SEE EASEMENT PROVISIONS NOTE 2, SHEET 2
- ⑱ PRIVATE UTILITY EASEMENT, SEE EASEMENT PROVISIONS NOTE 2, SHEET 2
- ⑲ PUBLIC UTILITY EASEMENT, SEE EASEMENT PROVISIONS NOTE 2, SHEET 2
- ⑳ PRIVATE UTILITY EASEMENT, SEE EASEMENT PROVISIONS NOTE 2, SHEET 2

TRACTS L, M, N, O, J, K DETAIL



SCALE: 1" = 60'



TRACT	ACRES	SQ. FT.	PERCENT
2	30.25	1,342,000	47.52
31	186.71	8,170,000	28.35
34	187.25	8,184,000	28.44
32	200.23	8,745,000	30.19
12	20.60	902,000	31.21
100	25.50	1,100,000	37.48
101	25.50	1,100,000	37.48
102	25.50	1,100,000	37.48
103	25.50	1,100,000	37.48
104	25.50	1,100,000	37.48
105	25.50	1,100,000	37.48
106	25.50	1,100,000	37.48
107	25.50	1,100,000	37.48
108	25.50	1,100,000	37.48
109	25.50	1,100,000	37.48
110	25.50	1,100,000	37.48
111	25.50	1,100,000	37.48
112	25.50	1,100,000	37.48
113	25.50	1,100,000	37.48
114	25.50	1,100,000	37.48
115	25.50	1,100,000	37.48
116	25.50	1,100,000	37.48
117	25.50	1,100,000	37.48
118	25.50	1,100,000	37.48
119	25.50	1,100,000	37.48
120	25.50	1,100,000	37.48

**MG** MEAD GILMAN  
LAND SURVEYORS  
P.O. BOX 289, WOODRIDGE, WA 98072  
425.485.1252 | WWW.MEADGILMAN.COM  
PROJ. NO. 22022 SHEET 7 OF 10

14/45

14/14

01/10/2022 11:12:55 AM V: 14 P: 48 202501050012  
2:11 PM C:\P\1414\1414.DWG C:\P\1414\1414.DWG  
2:11 PM C:\P\1414\1414.DWG C:\P\1414\1414.DWG

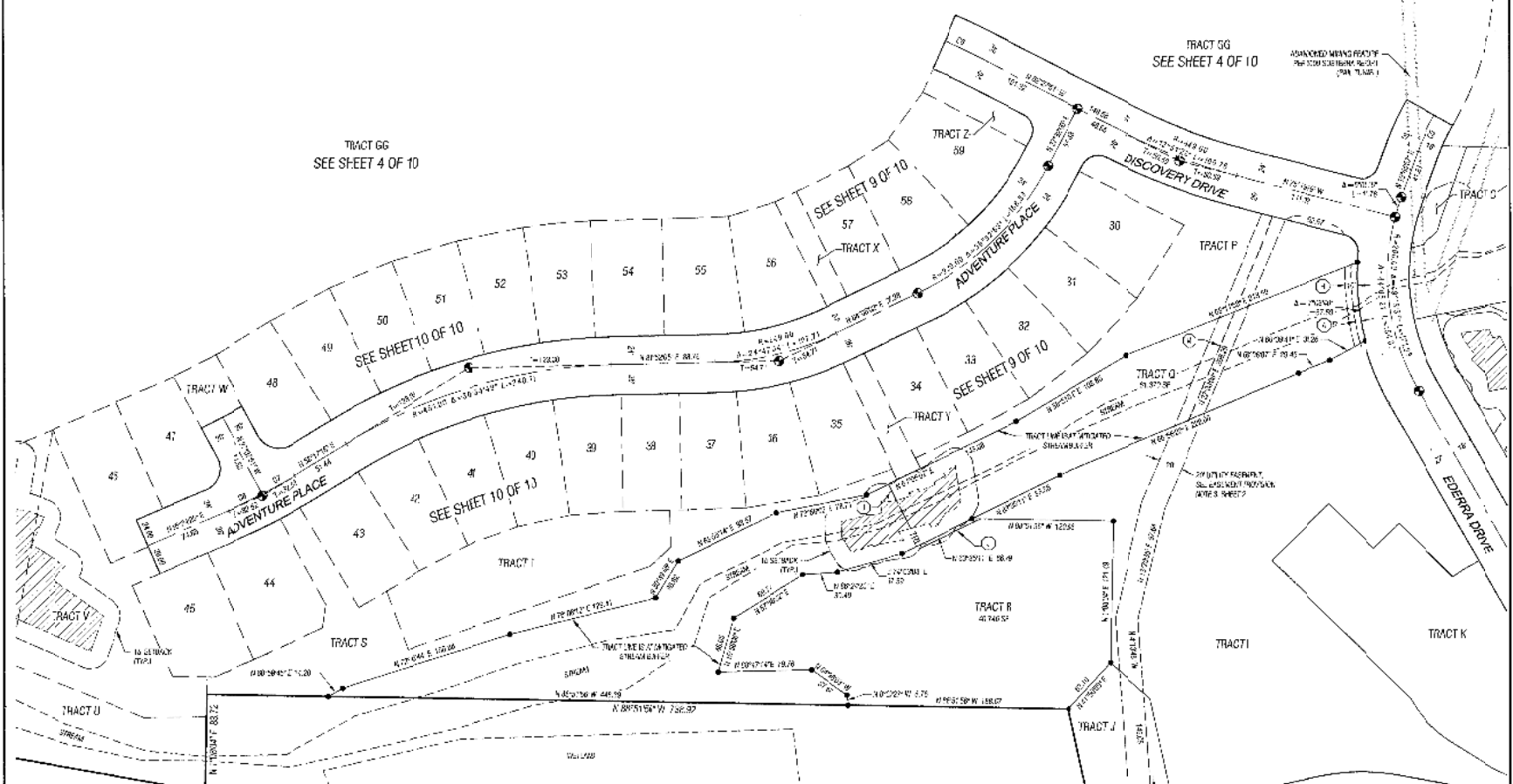


# CITY HEIGHTS - PHASE I

NE1/4 NW1/4 & SE1/4 NE1/4 & SW1/4 NE1/4 & NW1/4 NE1/4 & NE1/4 NE1/4 IN SEC. 27, T. 20 N., R. 15 E., W.M.  
KITITAS COUNTY, WASHINGTON

VOL/PG

14/14



### LEGEND

- ⊙ CONCRETE MONUMENT TO 1/4 CORNER AND COMPARMENT CORNER. 4885" DIA. SET TO 48" DEPT.
- 1/4" DIA. IRON BOLT WITH PLASTIC CAP STAKED. 4885" DIA. SET TO 48" DEPT.
- ✕ 1/4" DIA. IRON WASHERS STAKED. 48" DIA. SET TO 48" DEPT.
- ⊙ 2" DIA. IRON CAP SET STAKED AT CORNER OR POINT.
- ▨ APPROXIMATE AREA OF UTILITY SALES FOR THE UNDERGROUND. THE STREETS SHOWN ARE APPROXIMATE. NOT TO BE RELIED UPON FOR CONSTRUCTION.

### LEGEND (CONTINUED)

- Ⓐ PUBLIC UTILITY EASEMENT, SEE EASEMENT PROVISIONS NOTE 1, SHEET 2.
- Ⓑ PUBLIC UTILITY EASEMENT, SEE EASEMENT PROVISIONS NOTE 1, SHEET 2.
- Ⓒ PRIVATE UTILITY EASEMENT, SEE EASEMENT PROVISIONS NOTE 1, SHEET 2.
- Ⓓ PUBLIC UTILITY EASEMENT, SEE EASEMENT PROVISIONS NOTE 1, SHEET 2.
- Ⓔ PRIVATE UTILITY EASEMENT, SEE EASEMENT PROVISIONS NOTE 1, SHEET 2.
- Ⓕ PRIVATE UTILITY EASEMENT, SEE EASEMENT PROVISIONS NOTE 1, SHEET 2.
- Ⓖ PUBLIC UTILITY EASEMENT, SEE EASEMENT PROVISIONS NOTE 1, SHEET 2.
- Ⓗ PUBLIC UTILITY EASEMENT, SEE EASEMENT PROVISIONS NOTE 1, SHEET 2.
- Ⓘ PUBLIC UTILITY EASEMENT, SEE EASEMENT PROVISIONS NOTE 1, SHEET 2.
- Ⓚ APPROXIMATE CENTERLINE OF 1/4" DIA. IRON BOLT WITH PLASTIC CAP STAKED AT CORNER OR POINT.
- Ⓛ APPROXIMATE CENTERLINE OF 1/4" DIA. IRON WASHERS STAKED AT CORNER OR POINT.
- Ⓜ APPROXIMATE CENTERLINE OF 2" DIA. IRON CAP SET STAKED AT CORNER OR POINT.
- Ⓨ APPROXIMATE CENTERLINE OF 1/4" DIA. IRON BOLT WITH PLASTIC CAP STAKED AT CORNER OR POINT.

### TRACTS D, R DETAIL

TRAC #	SPANS	BEARINGS	LENGTH
20	200.00	S 42° 54'	32.91
19	198.00	S 72° 52'	30.43
17	140.00	S 72° 52'	31.95
24	140.00	S 72° 52'	32.95



**MG** MEAD GILMAN  
LAND SURVEYORS

P.O. BOX 289, WOODINVILLE WA 98072  
425.436.1252 | WWW.MEADGILMAN.COM

PROJ. NO. Z2022 SHEET 8 OF 10

14/14

3/4/2024



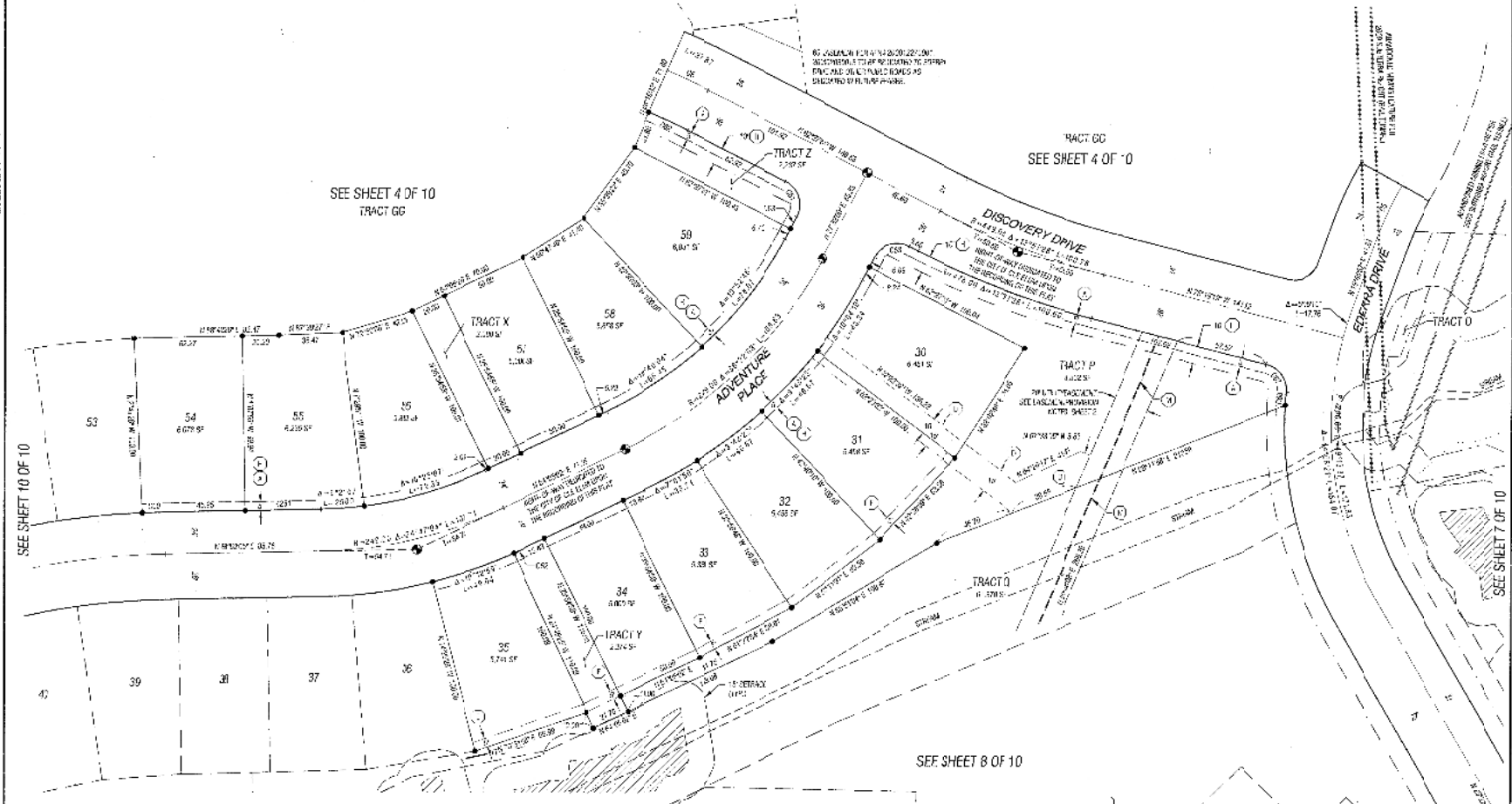
14/47

9/18/2023 11:12:55 AM V: 14 P: 47 20230180012  
FILED: 2023 APR 10 10:59 AM  
COUNTY CLERK: KYLE W. GIBSON  
CLERK OF COURTS: KYLE W. GIBSON  
CLERK OF COURTS: KYLE W. GIBSON  
CLERK OF COURTS: KYLE W. GIBSON

### CITY HEIGHTS - PHASE I

NE1/4 NW1/4 & SE1/4 NE1/4 & SW1/4 NE1/4 & NW1/4 NE1/4 & NE1/4 NE1/4 III SEC. 27, T. 20 N., R. 15 E., W.M.  
KITITIS COUNTY, WASHINGTON

VOL/PG  
14/47



#### LEGEND

- UNAPPROVED EASEMENT OR EASEMENT PROVISIONS NOT SHOWN IN A CASE TO BE OPEN.
- LOT OR PART THEREOF WITH EASEMENT OR EASEMENT PROVISIONS NOT SHOWN IN A CASE TO BE OPEN.
- ✕ EASEMENT OR EASEMENT PROVISIONS NOT SHOWN IN A CASE TO BE OPEN.
- EASEMENT OR EASEMENT PROVISIONS NOT SHOWN IN A CASE TO BE OPEN.
- ▨ EASEMENT OR EASEMENT PROVISIONS NOT SHOWN IN A CASE TO BE OPEN.

#### LEGEND (CONTINUED)

- ① PUBLIC UTILITY EASEMENT, SEE EASEMENT PROVISIONS NOTE 1, SHEET 2.
- ② PUBLIC WATER EASEMENT, SEE EASEMENT PROVISIONS NOTE 2, SHEET 2.
- ③ PUBLIC WATER EASEMENT, SEE EASEMENT PROVISIONS NOTE 4, SHEET 2.
- ④ PUBLIC WATER EASEMENT, SEE EASEMENT PROVISIONS NOTE 5, SHEET 2.
- ⑤ PUBLIC WATER EASEMENT, SEE EASEMENT PROVISIONS NOTE 6, SHEET 2.
- ⑥ PUBLIC WATER EASEMENT, SEE EASEMENT PROVISIONS NOTE 7, SHEET 2.
- ⑦ PUBLIC WATER EASEMENT, SEE EASEMENT PROVISIONS NOTE 8, SHEET 2.
- ⑧ PUBLIC WATER EASEMENT, SEE EASEMENT PROVISIONS NOTE 9, SHEET 2.
- ⑨ PUBLIC WATER EASEMENT, SEE EASEMENT PROVISIONS NOTE 10, SHEET 2.
- ⑩ PUBLIC WATER EASEMENT, SEE EASEMENT PROVISIONS NOTE 11, SHEET 2.
- ⑪ PUBLIC WATER EASEMENT, SEE EASEMENT PROVISIONS NOTE 12, SHEET 2.
- ⑫ PUBLIC WATER EASEMENT, SEE EASEMENT PROVISIONS NOTE 13, SHEET 2.
- ⑬ PUBLIC WATER EASEMENT, SEE EASEMENT PROVISIONS NOTE 14, SHEET 2.
- ⑭ PUBLIC WATER EASEMENT, SEE EASEMENT PROVISIONS NOTE 15, SHEET 2.
- ⑮ PUBLIC WATER EASEMENT, SEE EASEMENT PROVISIONS NOTE 16, SHEET 2.
- ⑯ PUBLIC WATER EASEMENT, SEE EASEMENT PROVISIONS NOTE 17, SHEET 2.
- ⑰ PUBLIC WATER EASEMENT, SEE EASEMENT PROVISIONS NOTE 18, SHEET 2.
- ⑱ PUBLIC WATER EASEMENT, SEE EASEMENT PROVISIONS NOTE 19, SHEET 2.
- ⑲ PUBLIC WATER EASEMENT, SEE EASEMENT PROVISIONS NOTE 20, SHEET 2.

SQUARES		
ACRES	SQUARES	PERCENT
0.1	260.32	0.23%
0.2	520.64	0.46%
0.3	780.96	0.69%
0.4	1041.28	0.92%
0.5	1301.60	1.15%
0.6	1561.92	1.38%
0.7	1822.24	1.61%
0.8	2082.56	1.84%
0.9	2342.88	2.07%
1.0	2603.20	2.30%
1.1	2863.52	2.53%
1.2	3123.84	2.76%
1.3	3384.16	2.99%
1.4	3644.48	3.22%
1.5	3904.80	3.45%
1.6	4165.12	3.68%
1.7	4425.44	3.91%
1.8	4685.76	4.14%
1.9	4946.08	4.37%
2.0	5206.40	4.60%

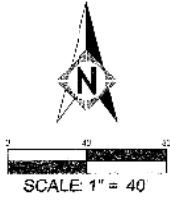


**MG** MEAD GILMAN  
LAND SURVEYORS  
P.O. BOX 288, WOODVILLE, WA 98072  
425.486.1252 | WWW.MEADGILMAN.COM  
PROJ. NO. 22022 SHEET 9 OF 10

14/47

14/48

01/18/2023 11:12:45 AM V: 14 P: 48 2023011500012  
 MEAD GILMAN SURVEYING CORPORATION  
 11000 10th Street, Woodinville, WA 98072  
 (206) 885-1252



SEE SHEET 4 OF 10

### CITY HEIGHTS - PHASE I

NE1/4 NW1/4 & SE1/4 NE1/4 & SW1/4 NE1/4 & NW1/4 NE1/4 & NE1/4 NE1/4 1/4 SEC. 27, T. 20 N., R. 15 E., W.M.  
 KITTITAS COUNTY, WASHINGTON

VOL/PG  
 14/48

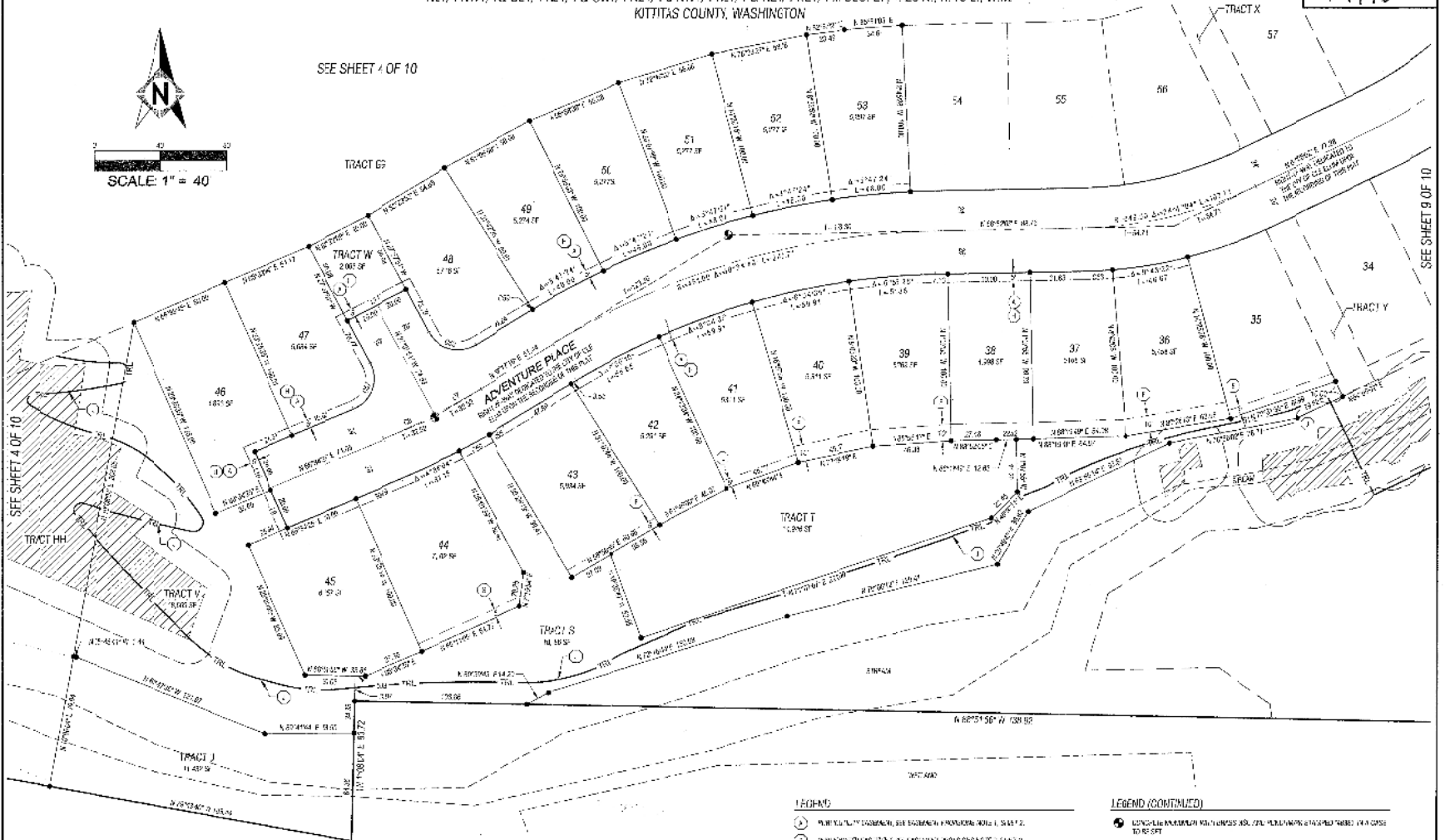


TABLE 2

TRACT NO.	ACRES	AREA (SQ. FT.)
G6	149.70	4112.74
G5	211.10	5794.12
W	20.00	552,000.00
S	20.00	552,000.00
T	20.00	552,000.00
J	20.00	552,000.00
HH	20.00	552,000.00
V	20.00	552,000.00
X	20.00	552,000.00
Y	20.00	552,000.00
Z	20.00	552,000.00



- LEGEND
- 1. PUBLIC UTILITY EASEMENT, SEE EASEMENT PROVISIONS ARTICLE 1, SHEET 2.
  - 2. PUBLIC UTILITY EASEMENT, SEE EASEMENT PROVISIONS ARTICLE 2, SHEET 2.
  - 3. EASEMENT FOR EASEMENT, SEE EASEMENT PROVISIONS ARTICLE 3, SHEET 2.
  - 4. PUBLIC UTILITY EASEMENT, SEE EASEMENT PROVISIONS ARTICLE 4, SHEET 2.
  - 5. EASEMENT FOR EASEMENT, SEE EASEMENT PROVISIONS ARTICLE 5, SHEET 2.
  - 6. EASEMENT FOR EASEMENT, SEE EASEMENT PROVISIONS ARTICLE 6, SHEET 2.
  - 7. EASEMENT FOR EASEMENT, SEE EASEMENT PROVISIONS ARTICLE 7, SHEET 2.
  - 8. EASEMENT FOR EASEMENT, SEE EASEMENT PROVISIONS ARTICLE 8, SHEET 2.
  - 9. EASEMENT FOR EASEMENT, SEE EASEMENT PROVISIONS ARTICLE 9, SHEET 2.
  - 10. EASEMENT FOR EASEMENT, SEE EASEMENT PROVISIONS ARTICLE 10, SHEET 2.
  - 11. EASEMENT FOR EASEMENT, SEE EASEMENT PROVISIONS ARTICLE 11, SHEET 2.
  - 12. EASEMENT FOR EASEMENT, SEE EASEMENT PROVISIONS ARTICLE 12, SHEET 2.
  - 13. EASEMENT FOR EASEMENT, SEE EASEMENT PROVISIONS ARTICLE 13, SHEET 2.
  - 14. EASEMENT FOR EASEMENT, SEE EASEMENT PROVISIONS ARTICLE 14, SHEET 2.
  - 15. EASEMENT FOR EASEMENT, SEE EASEMENT PROVISIONS ARTICLE 15, SHEET 2.
  - 16. EASEMENT FOR EASEMENT, SEE EASEMENT PROVISIONS ARTICLE 16, SHEET 2.
  - 17. EASEMENT FOR EASEMENT, SEE EASEMENT PROVISIONS ARTICLE 17, SHEET 2.
  - 18. EASEMENT FOR EASEMENT, SEE EASEMENT PROVISIONS ARTICLE 18, SHEET 2.
  - 19. EASEMENT FOR EASEMENT, SEE EASEMENT PROVISIONS ARTICLE 19, SHEET 2.
  - 20. EASEMENT FOR EASEMENT, SEE EASEMENT PROVISIONS ARTICLE 20, SHEET 2.

- LEGEND (CONTINUED)
- 21. EASEMENT FOR EASEMENT, SEE EASEMENT PROVISIONS ARTICLE 21, SHEET 2.
  - 22. EASEMENT FOR EASEMENT, SEE EASEMENT PROVISIONS ARTICLE 22, SHEET 2.
  - 23. EASEMENT FOR EASEMENT, SEE EASEMENT PROVISIONS ARTICLE 23, SHEET 2.
  - 24. EASEMENT FOR EASEMENT, SEE EASEMENT PROVISIONS ARTICLE 24, SHEET 2.
  - 25. EASEMENT FOR EASEMENT, SEE EASEMENT PROVISIONS ARTICLE 25, SHEET 2.
  - 26. EASEMENT FOR EASEMENT, SEE EASEMENT PROVISIONS ARTICLE 26, SHEET 2.
  - 27. EASEMENT FOR EASEMENT, SEE EASEMENT PROVISIONS ARTICLE 27, SHEET 2.
  - 28. EASEMENT FOR EASEMENT, SEE EASEMENT PROVISIONS ARTICLE 28, SHEET 2.
  - 29. EASEMENT FOR EASEMENT, SEE EASEMENT PROVISIONS ARTICLE 29, SHEET 2.
  - 30. EASEMENT FOR EASEMENT, SEE EASEMENT PROVISIONS ARTICLE 30, SHEET 2.

**MG** MEAD GILMAN  
 LAND SURVEYORS  
 P.O. BOX 289, WOODINVILLE, WA 98072  
 425.486.1252 | WWW.MEADGILMAN.COM  
 PROJ. NO. 22022 SHEET 10 OF 10

14/48

SEE SHEET 9 OF 10