



UPPER KITTITAS COUNTY

COMMUNITY REC CENTER

PERMIT SET

REV	DATE	DESCRIPTION

PROJ NO. 22-000471  
 DRAWN L. HAWKS  
 PROJ LEADER D. IRELAND  
 DATE 3/12/24  
 © ALS C ARCHITECTS, P.C.

PLANTING PLAN

L-200

PLANTING PLAN KEY:

ROCK MULCH TYPE 1: USED AT BUILDING FACES AND TO CREATE FIRE BREAKS BETWEEN PLANTINGS

PLANTING KEY: SEE L-201 FOR SPECIES

TREE, TYP.: SEE FULL PLANTING SCHEDULE ON L-201

BR NATIVE MIX BROADCAST: NATIVE GRASSES  
 SEE 32 92 00 TURF AND GRASSES  
 IRRIGATE FOR ESTABLISHMENT ONLY.

HS NATIVE MIX HYDROSEED: NATIVE GRASSES  
 SEE 32 92 00 TURF AND GRASSES & 32 92 16 HYDROSEEDING  
 PERMANENT SPRAY IRRIGATION

SW STORMWATER HYDROSEED: NATIVE HYDROSEED  
 SEE 32 92 00 TURF AND GRASSES & 32 92 16 HYDROSEEDING  
 IRRIGATE FOR ESTABLISHMENT ONLY.

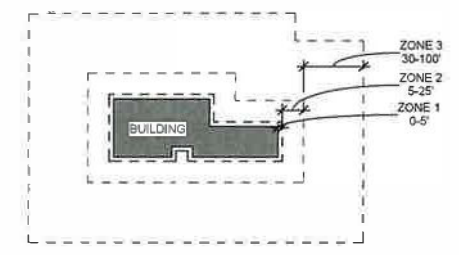
LWN LAWN: DROUGHT TOLERANT BLEND OF KENTUCKY BLUEGRASS,  
 FINE FESCUES AND TALL FESCUE. HYDROSEED,  
 PERMANENT SPRAY IRRIGATION.

- NOTES:
- SEE L-201 FOR PRELIMINARY PLANT LIST.
  - CONTRACTOR TO SALVAGE TOP 6" OF EXISTING SITE TOPSOIL FOR RE-USE. CONTRACTOR SHALL AMEND SALVAGED SOILS PER SPECIFICATIONS.
  - ALL PLANTED AREAS, EXCEPT FOR STORMWATER PLANTINGS, SHALL RECEIVE SALVAGED SITE TOPSOIL PER SPECIFICATIONS.
  - STORMWATER BASINS TO RECEIVE TOPSOIL PER CIVIL SPECIFICATIONS.
  - IRRIGATION: SEE NOTES ABOVE FOR IRRIGATION FOR EACH PLANTING TYPE. CONTRACTOR TO USE DEMO'D EXISTING SITE TREES FOR ARBORIST WOOD CHIP MULCH AT PLANTINGS.
  - ALL PLANTINGS NOT INSTALLED IN ROCK MULCH TO BE INSTALLED WITH 3" WOOD CHIP MULCH UNLESS NOTED OTHERWISE.
  - PRIOR TO THE PLANTING OF ANY MATERIALS, COMPACTED SOILS SHALL BE TRANSFORMED TO A FRIABLE CONDITION. ON ENGINEERED SLOPES, ONLY AMENDED PLANTING HOLES NEED MEET THIS REQUIREMENT.
  - CONTRACTOR TO SALVAGE, STORE AND TRANSPLANT 3'-6" TALL EXISTING DOUG FIR TREES FROM THE SITE FOR RE-INSTALLATION IN SELECT LOCATIONS PER PLAN LOCATION TBD AND QTY PER PLANT SCHEDULE.

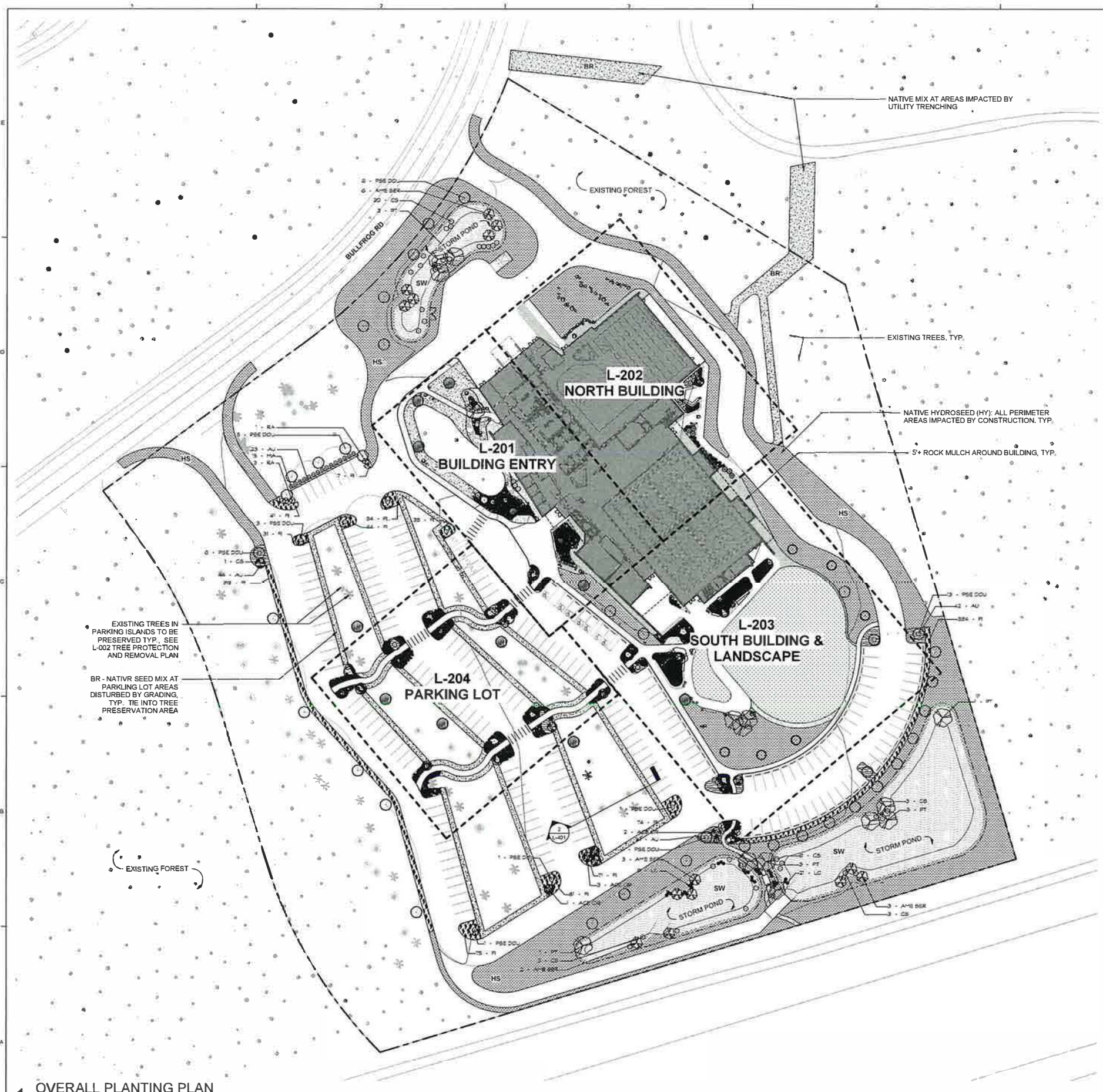
FIRE WISE NOTES:

IT IS RECOMMENDED BUT NOT REQUIRED THAT THE PLANTING FOR THE PROJECT MEET FIRE WISE STANDARDS. DEFENSIBLE SPACE STANDARDS VARY PER SOURCE AND LOCAL. SEE BELOW SUMMARY OF GUIDELINES BY THE NATIONAL FIRE PROTECTION ASSOCIATION (NFPA).

DEFENSIBLE SPACE DIAGRAM



- ZONE 1: 0-5'
- NO TREES OR SHRUBS
  - IN-ORGANIC MULCH
  - FIRE RESISTANT PLANTS ONLY
- ZONE 2: 5-30'
- TREES/SMALL CLUMPS OF TREES TO HAVE MIN. 18' BETWEEN CANOPIES
  - SPACED OUT OR SMALL GROUPS OF SHRUBS (2X SIZE SPACING TYP.)
  - TREE AND SHRUBS IN THIS ZONE SHOULD BE LIMITED TO SMALL CLUSTERS OF A FEW EACH TO BREAK UP THE CONTINUITY OF THE VEGETATION ACROSS THE LANDSCAPE
  - ELIMINATE CONTINUOUS GROUND FUEL AND LADDER FUEL
  - TREE PLACEMENT SHOULD BE PLANNED TO ENSURE THE MATURE CANOPY IS NO CLOSER THAN 10' TO THE EDGE OF THE STRUCTURE.
- ZONE 3: 30-100'
- MAINTAIN WELL SPACED TREES
  - 30-60'; (MIN. 12' SPACE BETWEEN CANOPIES)
  - 60-100'; (MIN. 6' SPACE BETWEEN CANOPIES)
  - ELIMINATE LADDER FUELS
  - MINIMIZE GROUND/SURFACE FUELS



1 OVERALL PLANTING PLAN  
 1" = 40'-0"

