



City of Cle Elum Climate Element

Public Engagement Plan

Adopted

August 13, 2024



Table of Contents

Table of Contents

Background.....	2
Purpose	3
Climate Policy Advisory Team Roles and Responsibilities	3
Public Engagement Strategy.....	3
Project Webpage	3
Public Meetings.....	3
Tribal Engagement Strategy.....	5
Inclusive Outreach	5
Project Schedule.....	8

Background

The WA Legislature passed House Bill 1181 into law in 2023 which requires Washington Cities to update their Comprehensive Plan to build community resilience and reduce greenhouse gas emissions that contribute to global climate change. This law integrates climate planning into Washington’s Growth Management Act (GMA) by including the following:

- Adds a GMA climate change and resiliency goal to: “ensure that comprehensive plans, development regulations, polices, plans and strategies under RCW 36.70A.201 and chapter 47.80 RCW adapt to and mitigate the effects of a changing climate; support reductions in greenhouse gas emissions and per capita vehicle miles traveled; prepare for climate impact scenarios; foster resiliency to climate impacts and natural hazards; protect and enhance environmental, economic, and human health and safety, and enhance environmental justice.”

The WA State Department of Commerce developed an interim guidance document in December 2023 for cities to follow as they work towards implementation.

The City of Cle Elum received a \$100,000 grant from Commerce in 2023, funded by Washington’s Climate Commitment Act.

The WA Department of Commerce climate planning grant is supported with funding from Washington’s Climate Commitment Act. The CCA supports Washington’s climate action efforts by putting cap-and-invest dollars to work reducing climate pollution, creating jobs, and improving public health. Information about the CCA is available at www.climate.wa.gov



Information about the CCA is available at www.climate.wa.gov

Purpose

Early and continuous public engagement is an important component of any long-range planning effort. The purpose of this Public Engagement Plan is to reach a diverse population in equitable and meaningful ways. Through public engagement, the city hopes to better understand how the effects of climate change are felt throughout the community. The plan provides for robust public participation which is vital to creating an inclusive and usable Climate Element.

Climate Policy Advisory Team Roles and Responsibilities

Creating and seating members onto a Climate Policy Advisory Team (CPAT) is the first step toward the creation of a new Climate Element. The group will meet periodically throughout the duration of the project, which is scheduled to run through May 2025. Policy team member responsibilities will include:

- Advising staff on project priorities;
- Assist with development of the public participation plan and vision statement;
- Reviewing and providing feedback on key project deliverables;
- Developing goal and policy recommendations; and,
- Encouraging community members to participate in the public process.

A press release was issued in April 2024 to invite interested residents to apply to join the group. Potential CPAT member applications were reviewed by city staff prior to appointment. The CPAT is composed of the following individuals:

Name	Organization	Interest
Jon Cornelius	Planning Commission	Sustainability
Ingrid Vimont	Hospital District Commissioner	Healthcare
Sharon Stuart	Small Business Owner	FEMA, Coordination
Phil Hess (advisory)	Cle Elum Fire Advisory	Forest Practices

Public Engagement Strategy

The city proposes to engage the public via through several methods. Public comments will assist the CPAT and the city as the plan is developed. All public engagement will be included as an appendix to the final Climate Element.

Project Webpage

The city established a project webpage dedicated to the Climate Element. Draft documents will be available for public review at various points throughout the planning period. Interested stakeholders will be able to sign up to be included in a mailing list to receive regular updates throughout the planning period. Notices of upcoming public meetings will be posted online when scheduled, and linked on the City's Facebook page. <https://cleelum.gov/climate-commitment/>

Public Survey

The city will create and distribute a public survey to understand public opinion and priorities. The survey will be available online and in paper format. It is anticipated that the survey will be available in the fall of 2024.

Public Meetings

The city anticipates a wide variety of public and stakeholder engagement opportunities throughout this process. Members of the public are invited to submit written comment about the Climate Element via email or in writing. Public meetings 2-4, along with the final council adoption, will be advertised in the Northern Kittitas County Tribune. A total of four public meetings are scheduled, in addition to the final adoption at City Council, as follows:

Meeting 1 – Project kickoff

The project kickoff meeting was held on April 9, 2024, at the City Council Business Meeting. A rough outline will be presented including some background information, formation of the CPAT, the importance of meaningful public engagement, necessary steps to complete the Climate Element, and a rough timeline.

Interested stakeholders are encouraged to attend the kickoff meeting to discuss next steps and provide contact information so they can be informed about key timelines and deliverables.

Meeting 2 – Showcase data exhibits

Meeting 2 will include the presentation of a significant amount of climate data. The initial phase of this project includes using a climate mapping tool developed by the University of Washington to identify and explore potential climate hazards. A secondary component of this meeting will be presenting a compilation of existing goals and policies that deal, either directly or indirectly, with climate resilience found in the city's comprehensive plan, shoreline master program, critical areas ordinance, and work completed for the Kittitas County hazard mitigation plan.

Meeting 3 – Review planning process and present new goals and policies

Meeting 3 will outline a review of the planning process to-date and include the presentation of new or modified goals and policies designed to fill climate resiliency gaps. This will be the final public meeting prior to development of the draft plan.

Meeting 4 – Present draft Climate Element and receive final public comment

The final scheduled public meeting is where the draft Climate Element will be presented to the Planning Commission. The draft will include a summary of the previous public engagement meetings along with a list of all comments received. This will be the final meeting to submit public comments prior to presentation of the Climate Element to City Council for adoption.

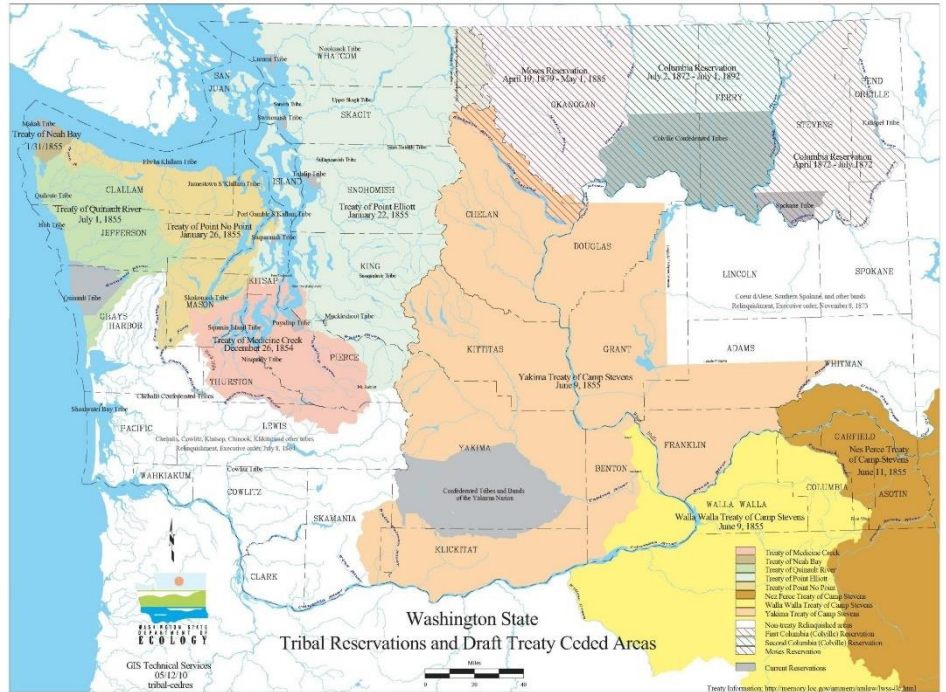
Final adoption

Once all public comments have been received and implemented into the draft Climate Element, it will be presented to City Council for adoption at an open public meeting.

In order to encourage participation and engage a wide range of stakeholders and interested parties, public meetings will be scheduled in the evening, where practical, and will include light refreshments. Meeting dates and times will be advertised on the City's website as they are scheduled.

Tribal Engagement Strategy

New GMA requirements for Tribal Coordination were established in 2022 by House Bill 1717. RCW 36.70A.040 allows tribes to voluntarily participate in the local comprehensive planning process. The City of Cle Elum currently engages with the Snoqualmie Tribe, Colville Tribe and the Yakama Nation through the environmental review process. Additional engagement during this Climate Update process will occur if requested by affected tribes.



Inclusive Outreach

Demographics

The City of Cle Elum has a population of 2,157 people, 7% of whom are Hispanic or Latino. The city has 1,116 households and an average household size of 2.76 persons. English is the primary language spoken at home at 93.6%, 5.6% of homes speak Spanish.

The median age in Cle Elum is 48.6. 16.1% of the population is under 18 years old and 20.9% of the population is over the age of 65.



The median household income in Cle Elum is \$56,645 which is below both Kittitas County (\$66,800) and WA State (\$91,306). Approximately 14% of Cle Elum residents have a bachelor's degree or higher.

The city has a 56.5% employment rate, with the top 3 sectors being

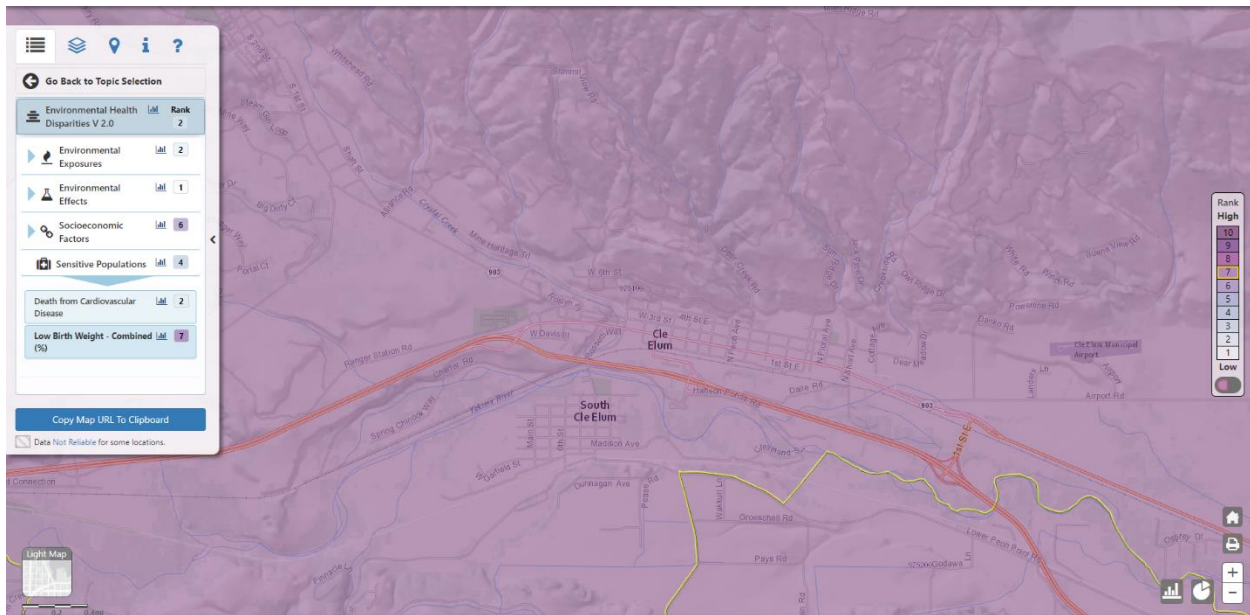
Construction (19.2%), Arts, entertainment, recreation, accommodation, and food services (17.9%), and Retail trade (12.1%).



About 59.7% of homes are owned in the city limits. The median gross rent for rental housing is \$1,116 per month. [Cle Elum city, Washington - Census Bureau Profile](#)

WA State Department of Health

The Washington State Department of Health developed a mapping tool for health disparities that displays location-based information to help identify health disparities in a community - [Information by Location | Washington Tracking Network \(WTN\)](#). The mapping tool includes a variety of datasets showing information on health outcomes, social determinants of health, and economic determinants of health. Overall, the City of Cle Elum ranks 2/10 for Environmental Health Disparities. The identified environmental exposures, environmental effects, socioeconomic factors, and sensitive population information will be discussed further in the Climate Element. The City of Cle Elum lies within Census Tract 530379-75100.



Environmental Exposures

For overall Environmental Exposures, the City of Cle Elum ranks 2/10. However, the city ranks 9/10 for Ozone Concentration.

Environmental Effects

The City of Cle Elum ranks 1/10 for Environmental Effects. However, the city ranks 7/10 for Lead Risk from Housing.

Socioeconomic Factors

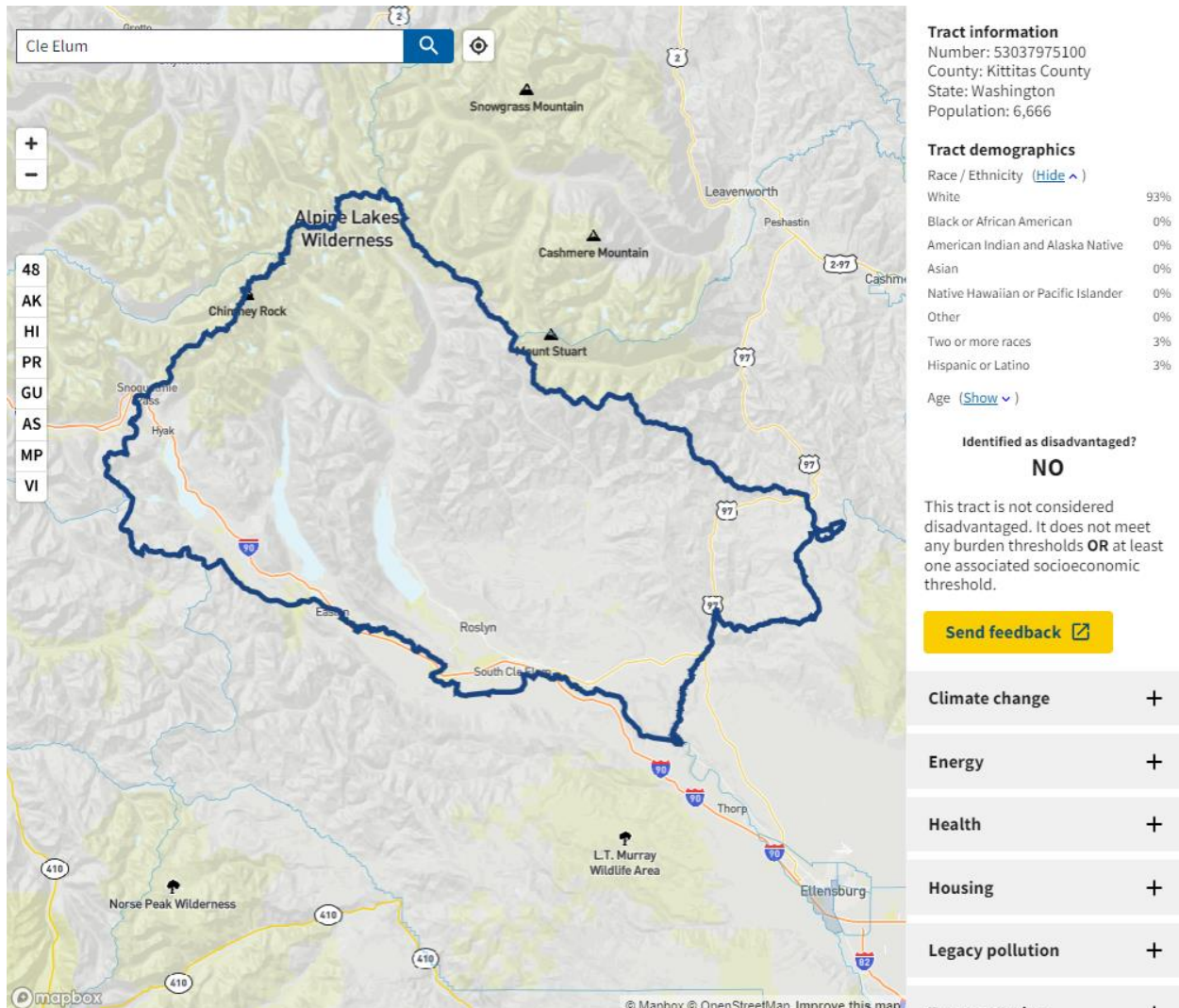
The City of Cle Elum ranks 6/10 for Socioeconomic Factors, including: No High School Diploma (7/10), Population Living in Poverty (8/10), and Transportation Expense (9/10), Unaffordable Housing (6/10) and Unemployed (6/10).

Sensitive Populations

The City of Cle Elum ranks 4/10 for Sensitive Populations. This health disparity metric looks at Low Birth Weight (7/10).

White House Council on Environmental Quality

The White House Council on Environmental Quality developed a [Climate and Economic Justice Screening Tool](#) that examines overburdened and underserved areas at the census tract level. Cle Elum is located in Census Tract 530379-75100, which is not identified as disadvantaged.



Based on the Demographics, the Department of Health Information by Location Tool, and the White House Council on Environmental Quality Climate and Economic Justice Screening Tool the City of Cle Elum has developed the following Outreach Goals and Outcomes:

Outreach Goal 1:

Engage the community at-large so that all residents affected by climate change can voice their opinion and contribute to the process.

Outcome 1.1:

Receive a wide variety of comments and opinions from the community.

Outcome 1.2:

Identify alternative methods of outreach and communication, which may change throughout the project timeline, to reach the highest number of residents and interested stakeholders.

Outreach Goal 2:

Through equitable public engagement, identify segments of the community who may be more affected by climate change.

Outcome 2.1:

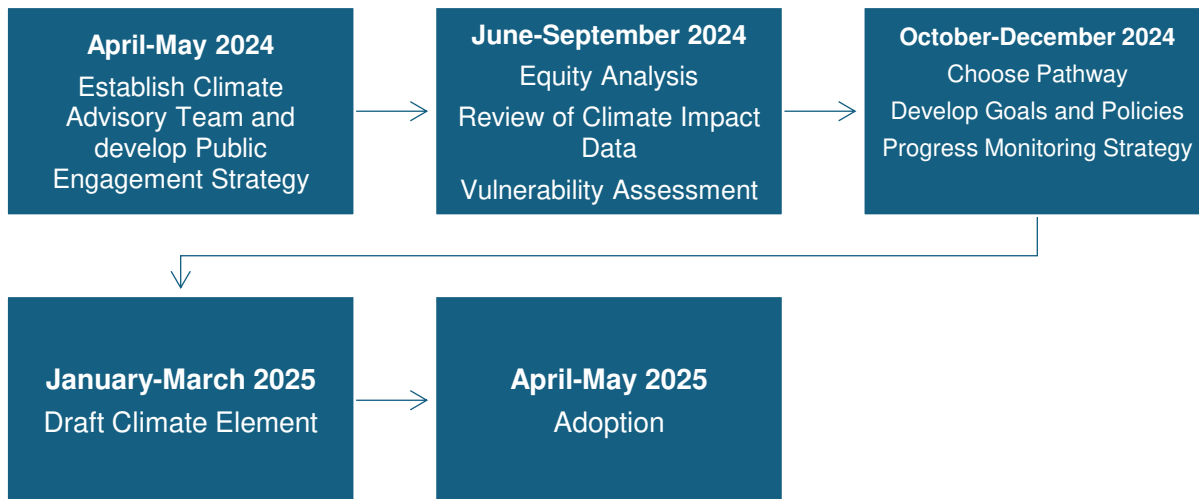
Ensure that any barriers to achieving meaningful outreach to certain segments of the community such as language, internet access, time-of-day (for public meetings), or others are remedied through appropriate accommodations.

Outcome 2.2:

If necessary based on community requests, provide both an in-person and electronic option for public meetings.

Project Schedule

The city anticipates this effort to take around 13 months to complete. The public meetings outlined above will roughly follow the schedule below. Adoption of the completed Climate Element will ensure that the city is compliant with HB 1181.



Contact: Colleda Monick, City Planner, at planning@cleelum.gov