

# Cle Elum Climate Element

*Progress Report*

*and*

*Summary of Identified Hazards*

# Process

- Kickoff Meeting – April 9, 2024
- Climate Policy Advisory Team (CPAT)
- Public Engagement Strategy
- Draft Climate Resiliency Element
- Adoption

Figure 2: Climate Element Guidance



Figure: Dept. of Commerce Climate Element Planning Guidance – Dec. 2023

# Climate Policy Advisory Team

- 4 Members: Jon Cornelius, Sharon Stuart, Ingrid Vimont, Phil Hess (Advisory)
- Meetings:
  - June 17, 2024
    - Introductions and Review Process
  - July 22, 2024
    - Review and Rank Identified Climate Hazards
    - Review and Recommend Public Engagement Plan
  - August 21, 2024
    - Brainstorm Materials and FAQ for 09/24/24 Meeting at Sr. Center

# Public Engagement

- Public Engagement Plan Adopted 08/13/24
- Public Meeting at Senior Center 09/24/24
- Webpage is live and includes new documents when ready for public review
- FAQ and Posterboards





## City of Cle Elum Climate Element FAQ

The City of Cle Elum is developing a Climate Element for its Comprehensive Plan. The Climate Policy Advisory Team (CPAT) is working with the consultant team at HLA Engineering and Land Surveying, Inc to develop the plan in conformance with state requirements.



### 1. Why is Cle Elum creating a Climate Element?

The Washington State legislature passed House Bill 1181 in 2023 which requires municipalities to add a climate chapter, addressing climate resilience, to their comprehensive plan.

### 2. What is a Comprehensive Plan?

The Comprehensive Plan is a requirement of the Washington State Growth Management Act. It is a 20-year plan to outline the future growth of the city, based on future population, housing, land use, capital facilities, and other projections.

### 3. What is Climate Resilience?

Climate Resilience is the process of anticipating, preparing for, and adapting to changes in the climate and minimizing negative impacts to natural systems, infrastructure, and communities.

### 4. What is the Planning Area and Timeline?

The planning area is the Cle Elum City limits. The timeline to create the Climate Element of the Comprehensive Plan is June 2025, based on grant requirements.

### 5. What Climate impacts are projected for Cle Elum?

The CPAT is reviewing potential impacts related to Wildfires, Drought, Heat, Flooding, and Precipitation.

### 6. Can I keep my Gas Stove?

Yes! The recent conversations and edits to the building code regarding gas stoves and appliances is not a component of this project. Those changes were made by the Washington State Building Code Council – <https://sbcc.wa.gov> Nothing in the Climate Element will reference a prohibition on gas appliances or a requirement to retrofit existing structures to remove gas appliances.

### 7. Why is this important?

Developing a Climate Element is a state mandate, and the CPAT acknowledges that may not sit well with some Cle Elum residents. However, since we do need to complete this work, we want to draft something that is relevant to the needs of Cle Elum.

The creation of the Climate Element will maintain the city's compliance with the Growth Management Act which in turn will allow for the city to pursue grant funding for future implementation projects.

### 8. What projects?

This is where we need your help. We want to include goals and policies to support future projects that will help Cle Elum grow and prosper. One such project the CPAT has discussed is the creation of a Community Wildfire Protection Plan (CWPP).

### 9. How will this impact me?

This project will create a Climate Element of the Comprehensive Plan that will include goals and policies for the City to potentially implement in the future, if funding is available. Some items that the Advisory Team has discussed are policies to create/develop Evacuation Routes, Identify funding for Backup Communications and Medical Plans, and developing a city-focused Community Wildfire Protection Plan. The Climate Element will not require the citizens of Cle Elum to endure any financial hardships such as installing EV chargers or Solar Panels in their home.

### 10. What do you need from me and when do you need it?

The development of the Climate Element is an open process and we want your comments and suggestions. Public engagement is an important component of this project, and at the end of the process, we want to develop a Climate Element that suits the needs of Cle Elum.

Public comment can be submitted anytime at the contact information below. There will also be opportunities to attend public meetings and hearings which will be scheduled in the future.

### 11. What impact does my feedback have?

All comments and feedback will be compiled into an appendix of the Climate Element. The comments will be reviewed by staff, the CPAT, and the City Council, and will help to shape the final document.

### 12. How can I stay informed?

Updates will be provided on the project website, when available - <https://cleelum.gov/climate-commitment/>

If you have any questions, please contact [planning@cleelum.gov](mailto:planning@cleelum.gov)

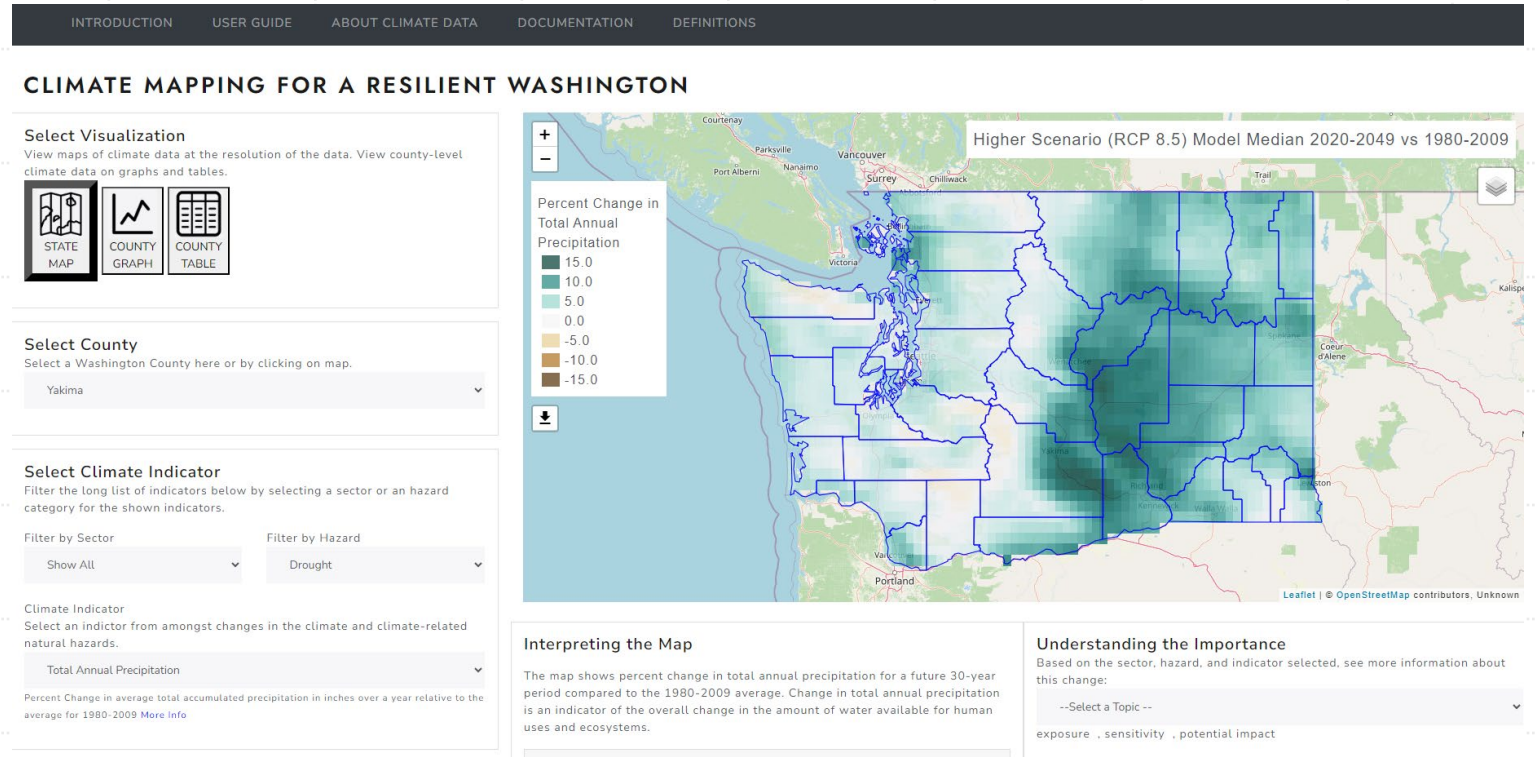


The WA Department of Commerce climate planning grant is supported with funding from Washington's Climate Commitment Act. The CCA supports Washington's climate action efforts by putting cap-and-invest dollars to work reducing climate pollution, creating jobs, and improving public health. Information about the CCA is available at [www.climate.wa.gov](http://www.climate.wa.gov).

# UW Climate Mapping Tool

The University of Washington College of the Environment has created an online “Climate Mapping for a Resilient Washington” webtool that includes data and information on the expected changes in the climate and related natural hazards that can be customized for hazard- and sector-specific climate impacts. The selected data is then presented by explaining the exposure, sensitivity, and potential impact of any particular hazard as it relates to the following ranked sectors:

- Emergency Management
- Agriculture/Forestry
- Water Resources
- Transportation
- Human Health
- Economic Development
- Buildings and Energy
- Waste Management
- Zoning and Development
- Ecosystems
- Cultural Resources and Practices



[Washington County Climate Projections \(uw.edu\)](https://uw.edu/washington-county-climate-projections)

# Using the Tool

The webtool is very user-friendly and available for the public to identify and learn more about climate hazards. The different hazards can be selected through a drop-down filter, and each hazard has its own set of climate indicators. These can also be filtered by sector. For mapping future projections, we used the higher scenario and a time horizon of 2020-2049. The generate map can be downloaded for future use and analysis, and additional narrative information is also available.

## Select Climate Indicator

Filter the long list of indicators below by selecting a sector or an hazard category for the shown indicators.

Filter by Sector ⓘ

Show All

Filter by Hazard

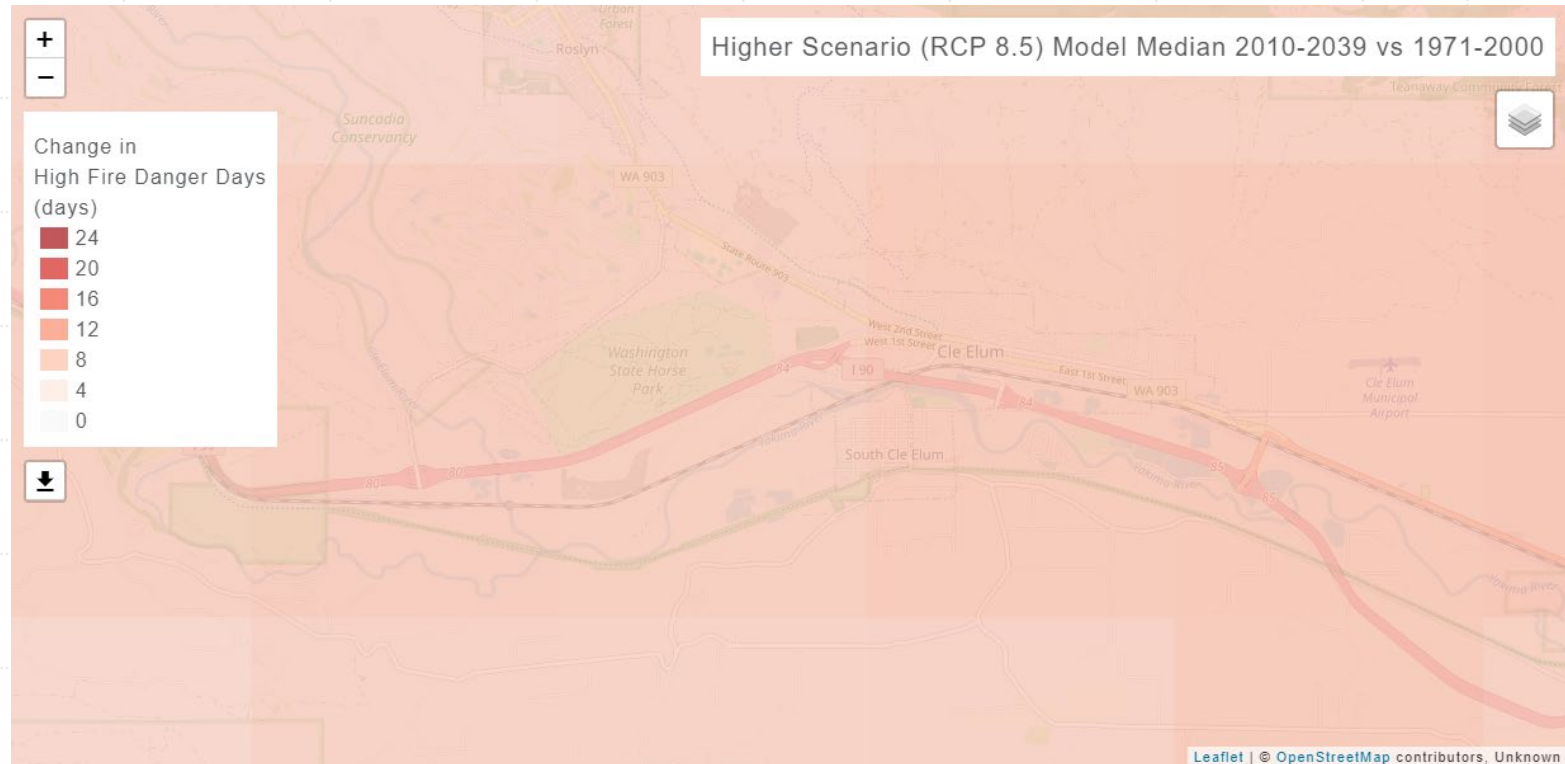
Wildfire

Climate Indicator

Select an indicator from amongst changes in the climate and climate-related natural hazards.

Wildfire Danger

Change in the number of days per year, relative to 1971 - 2000, with high fire potential based on dry fuels, fuel moisture below the 20th percentile. [More Info](#)

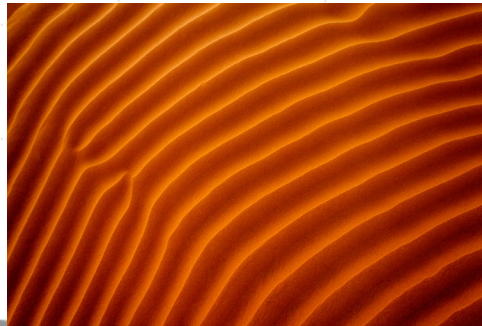
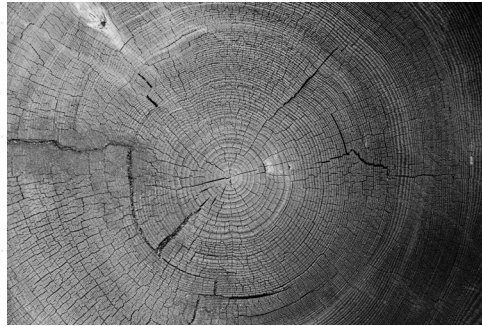


[Washington County Climate Projections \(uw.edu\)](#)



# Ranked Hazards in Cle Elum

- Wildfire
- Drought
- Extreme Heat
- Flooding
- Extreme Precipitation





## City of Cle Elum Climate Element Identified Hazards



Source: Seattle PI: Cle Elum Wildfire burns 70 homes, buildings—2012

**Wildfire**—Wildfire activity has a direct effect on Cle Elum due to its proximity to forestlands in the Cle Elum Ranger District. Nearby wildfires can cause a direct impact to city operation and daily life.

### Impacts:

- Business Interruption
- Limited Outdoor Activities
- Health Hazards: Smoke and Heat
- Loss of buildings and Infrastructure

### Ideas:

- Community Wildfire Protection Plan
- Identify Evacuation Routes
- Increase Emergency Notifications
- Develop Backup Medical Plans

**Drought**—Drought looks at changes in precipitation patterns throughout the year and the subsequent effect on available water supplies. Reduced snowpack in the winter can translate to decreased streamflows in the summer, and less available water for municipal use.

### Impacts:

- Increased Demand for Water Usage
- Lower Streamflows
- Increased Need for Emergency Services

### Ideas:

- Encourage Low-Impact Development
- Include Drought-Resistant Vegetation in City Projects, Where Feasible



Source: Apple Valley News Now: \$5 million federal grant to mitigate drought in Cle Elum Reservoir—2023



For more information, visit <https://cleelum.gov/climate-commitment/>

Send comments to [planning@cleelum.gov](mailto:planning@cleelum.gov)



The WA Department of Commerce climate planning grant is supported with funding from Washington's Climate Commitment Act. The CCA supports Washington's climate action efforts by putting cap-and-invest dollars to work reducing climate pollution, creating jobs, and improving public health. Information about the CCA is available at [www.climate.wa.gov](http://www.climate.wa.gov).

## City of Cle Elum Climate Element Identified Hazards



Source: Cle Elum Downtown Association: Pioneer Days—2024

**Extreme Heat**—Extreme Heat is an indicator on heat stress for people, ecosystems and infrastructure.

### Impacts:

- Damaged Vegetation and Infrastructure
- Increased Demand on Emergency Services—Heat Stroke, Exhaustion
- Greater Demand for Air Conditioning and Cooling

### Ideas:

- Grant Opportunities to Increase Air Conditioning Efficiency
- Shade Structures/Trees in Parks and Along Pedestrian Routes

### Flooding/Extreme Precipitation—

Flooding looks at increases in annual peak streamflows and the return interval of the 25-year storm.

Extreme Precipitation looks at changes in the intensity of precipitation on the built environment.

### Impacts:

- Increased Infrastructure and Property Damage
- Increased Demand for Emergency Services
- Service Delays and Alteration of Normal Travel Routes

### Ideas:

- Enhanced Emergency Management Notifications
- Development Controls in Flood-Prone Areas
- Increased Stormwater Capacity Requirements



Source: Ellensburg Daily Record/Cameron Porter—Toumey River on Red Bridge Road—2018



For more information, visit <https://cleelum.gov/climate-commitment/>

Send comments to [planning@cleelum.gov](mailto:planning@cleelum.gov)



The WA Department of Commerce climate planning grant is supported with funding from Washington's Climate Commitment Act. The CCA supports Washington's climate action efforts by putting cap-and-invest dollars to work reducing climate pollution, creating jobs, and improving public health. Information about the CCA is available at [www.climate.wa.gov](http://www.climate.wa.gov).



# Next Steps

- Develop Goals and Policies to address Identified Hazards

- Ideas:

- Develop a Community Wildfire Protection Plan
- Identify Evacuation Routes
- Encourage Low-Impact Development
- Provide shade structures/trees in parks and along pedestrian routes
- Enhance Emergency Management Notifications

- Finalize Vision Statement:

*“Proactively support goals and policies that contribute to a more sustainable and resilient city. Cle Elum recognizes its history as an Era Town and is taking steps in the present to ensure that future generations can celebrate this important cultural and historic heritage.”*

- Future Public Engagement Opportunities

- Meeting to further examine identified hazards
- Meeting to discuss and review potential goals and policies
- SEPA Review
- Meeting and Hearing to review draft Climate Element

# Cle Elum Climate Element



September 24, 2024

"The WA Department of Commerce climate planning grant is supported with funding from Washington's Climate Commitment Act. The CCA supports Washington's climate action efforts by putting cap-and-invest dollars to work reducing climate pollution, creating jobs, and improving public health. Information about the CCA is available at [www.climate.wa.gov](http://www.climate.wa.gov)."