



Habitat
for Humanity®
Seattle–King & Kittitas Counties



**every
one**

deserves a decent
place to live.

**Floral Ave Development
May 2026**

Our Model



Neighborhood Revitalization

Stabilizing affordable neighborhoods and helping working families and elderly households by providing repairs.



Financial Empowerment

By selecting and educating families who are ready for homeownership, 99.3% complete our program.



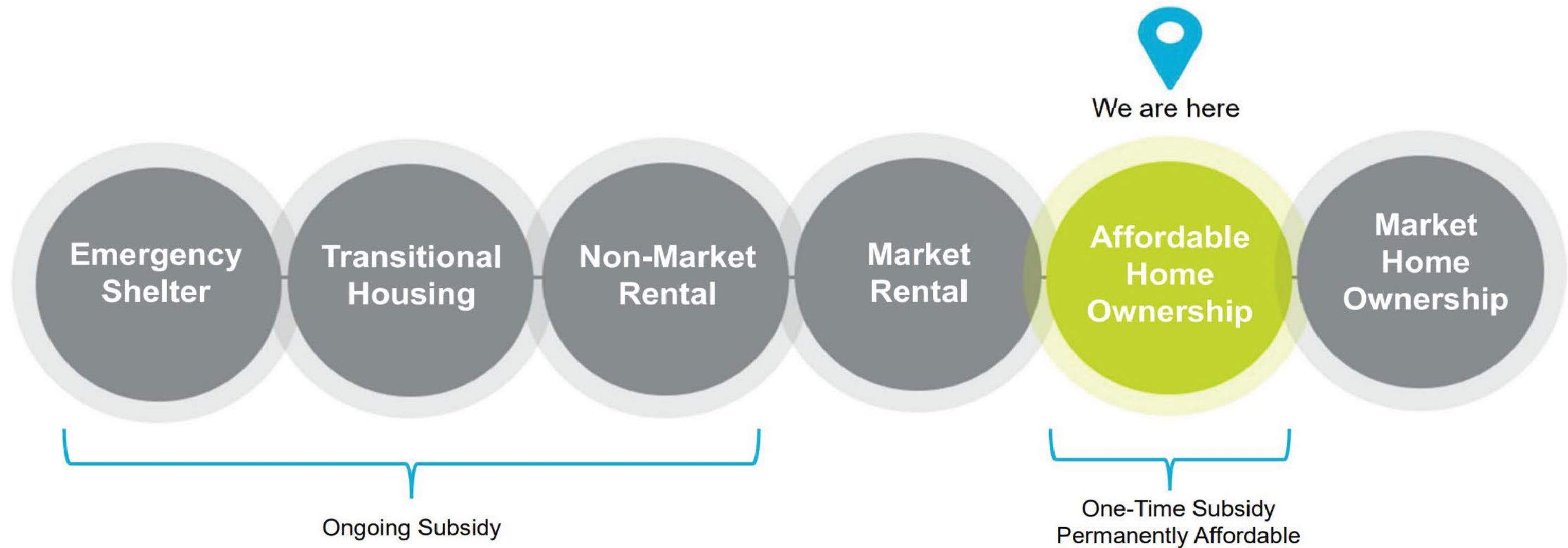
Housing Permanence

Through homeownership, we target long-term change. Not just for single families, but for future communities.



Permanent Affordability

The Habitat Model



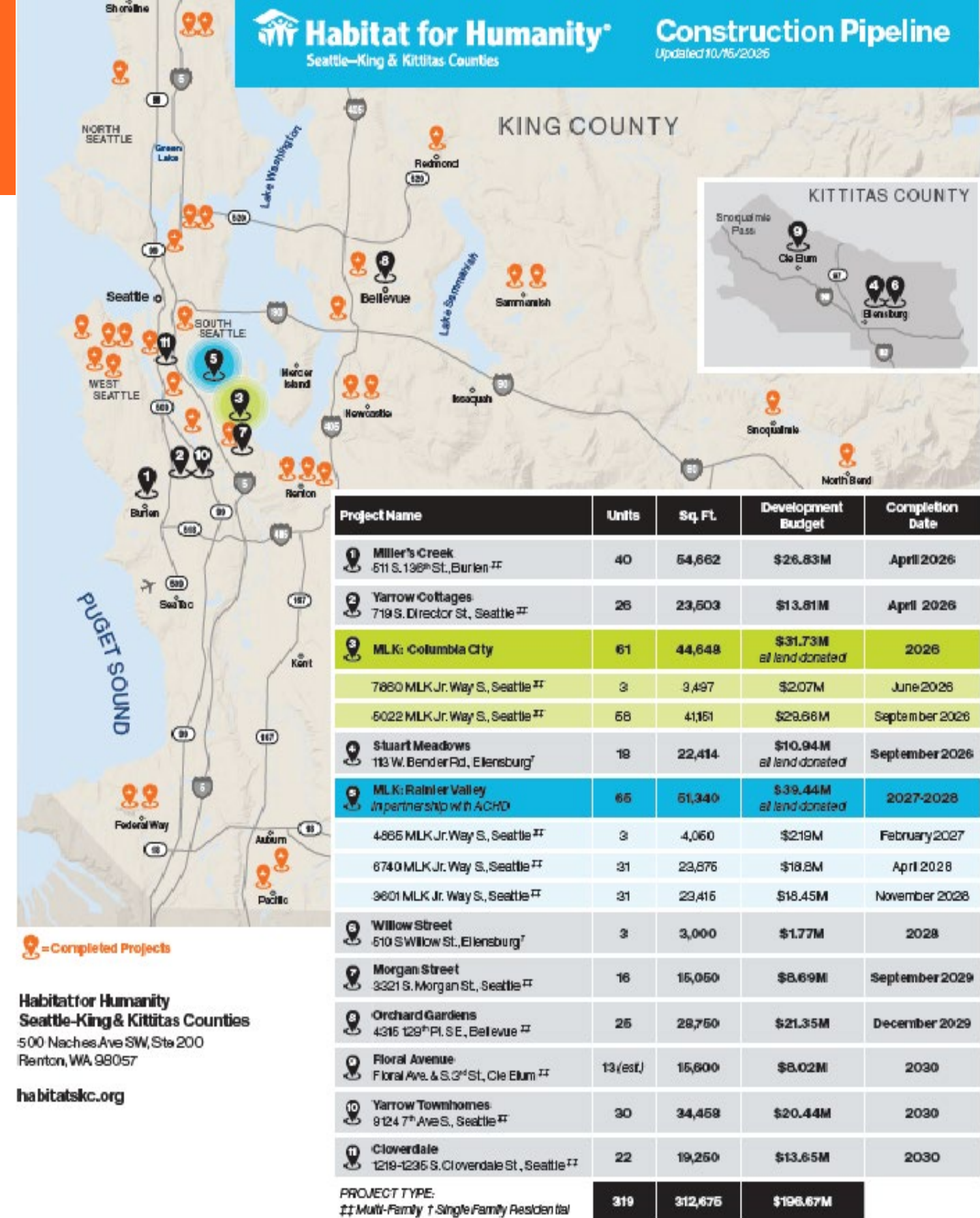
Permanent Affordability

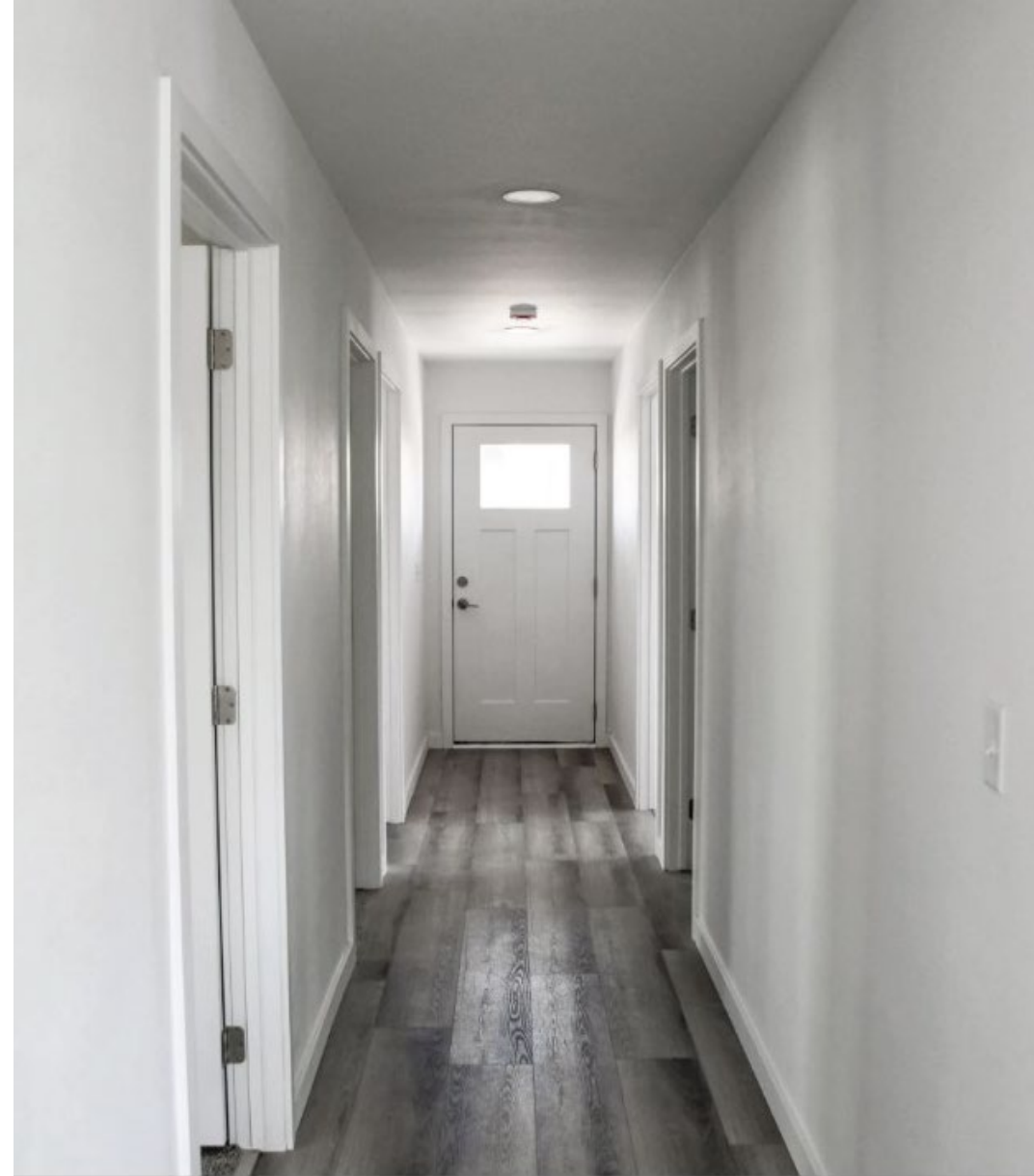
- Habitat homes are affordable to households under 80% AMI and limited appreciation of 1.5% per year.
- This ensures that homeowners for generations will benefit from the opportunity to have an affordable home.
- When a homeowner chooses to sell, Habitat buys it back, makes necessary repairs, and selects a new homebuyer.



Our Experience

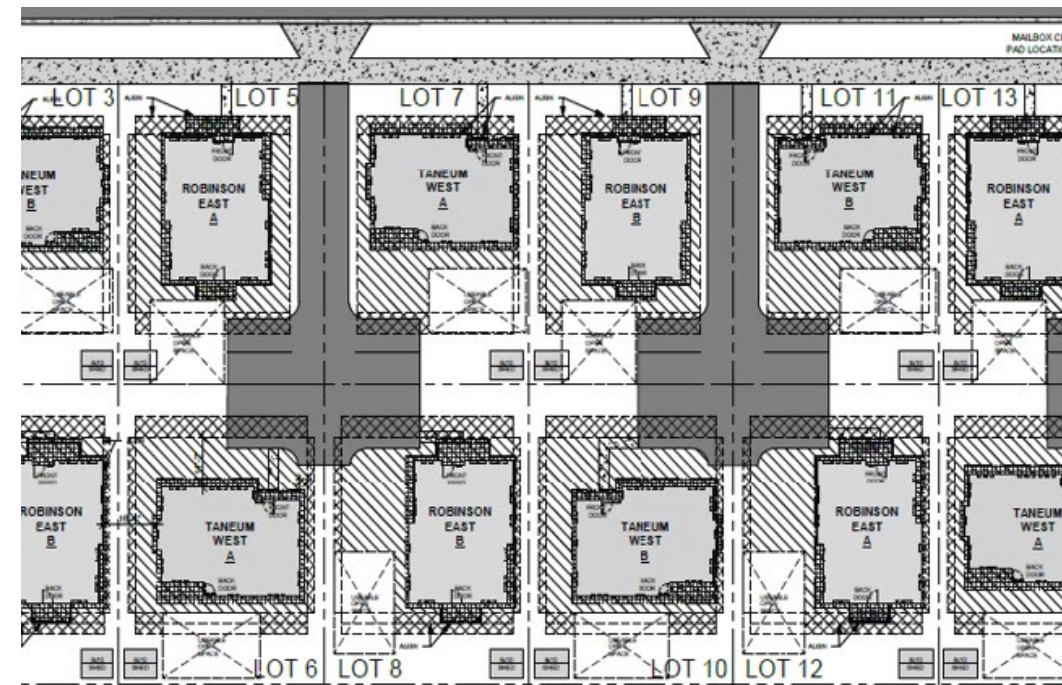
- Founded in 1986
- Non-profit home developer
- 458 homes built to date (and counting)
- Serving more than 1,700 people in more than 520 households.
- We have invested in our staff and capacity, with a goal to increase our impact.
- Expanding our impact – 38 homes built in 2025, 67 homes will be completed in 2026, 76 homes in 2027
- We build townhomes, condo buildings, and single family homes
- 319 homes in our current pipeline





Stuart Meadows

- 18 New Homes
- 3 Bedroom
- Construction completion 2026
- Currently selecting buyers for last 6 homes!



Upcoming Kittitas Development



• Willow Street – Ellensburg 3 homes – Est. 2027



• Floral Ave – Cle Elum 16 Homes

Estimated Development Schedule

Site Control

Complete

Design/Permitting

Q1 2025 – Q2 2027

Begin Construction

Q2 2027 (if fully funded)

Certificate of Occupancy

Q2 2030





About HSKKC: www.habitatskc.org

Homeownership opportunities:
www.buyhabitat.org

We envision a world where everyone has a safe, decent, and affordable place to live.



Floral Ave Development

Site Design

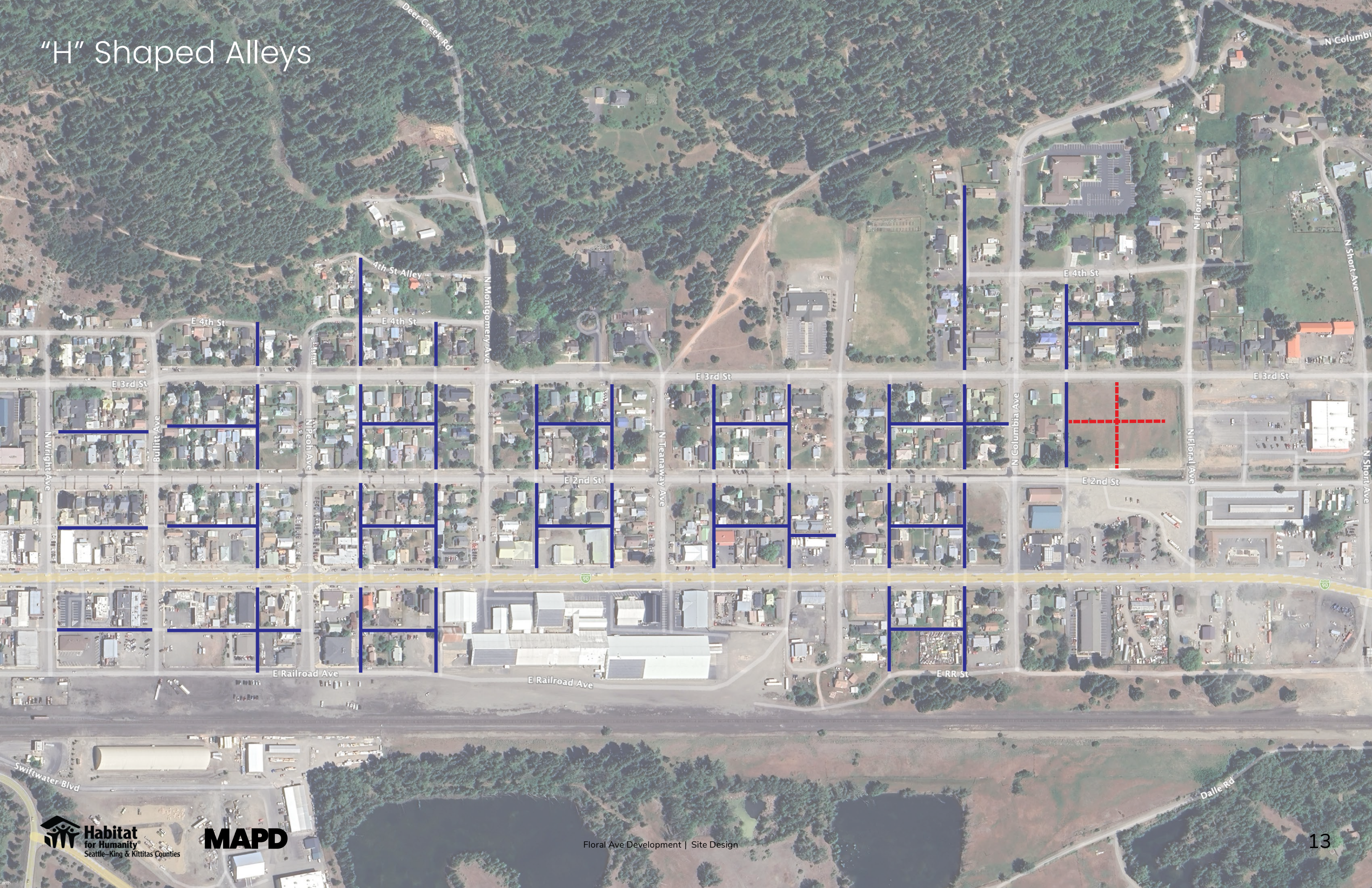


MAPD MANASTASH ARCHITECTURE
PLANNING & DEVELOPMENT

Location



"H" Shaped Alleys



Site

E THIRD ST

EXISTING 20' ALLEY
RIGHT-OF-WAY

FLORAL AVE

E SECOND ST

Base Condition



Critical Areas



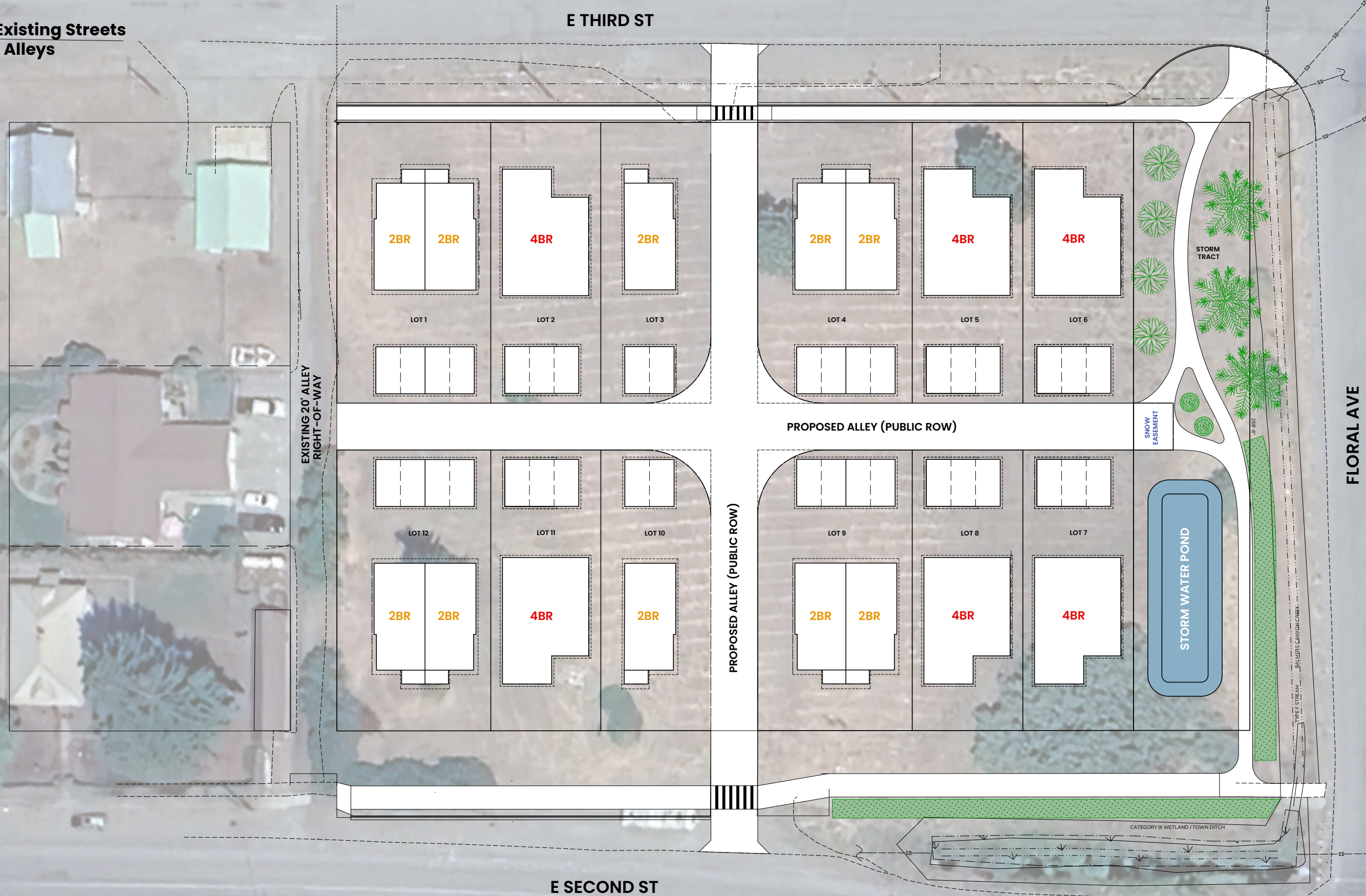
No-Action Scheme

- 14 Total Units
- 6 Front Doors off New Street, 8 off Existing Streets
- 20 Parking Spaces off New Alleys, 14 off Existing Alley



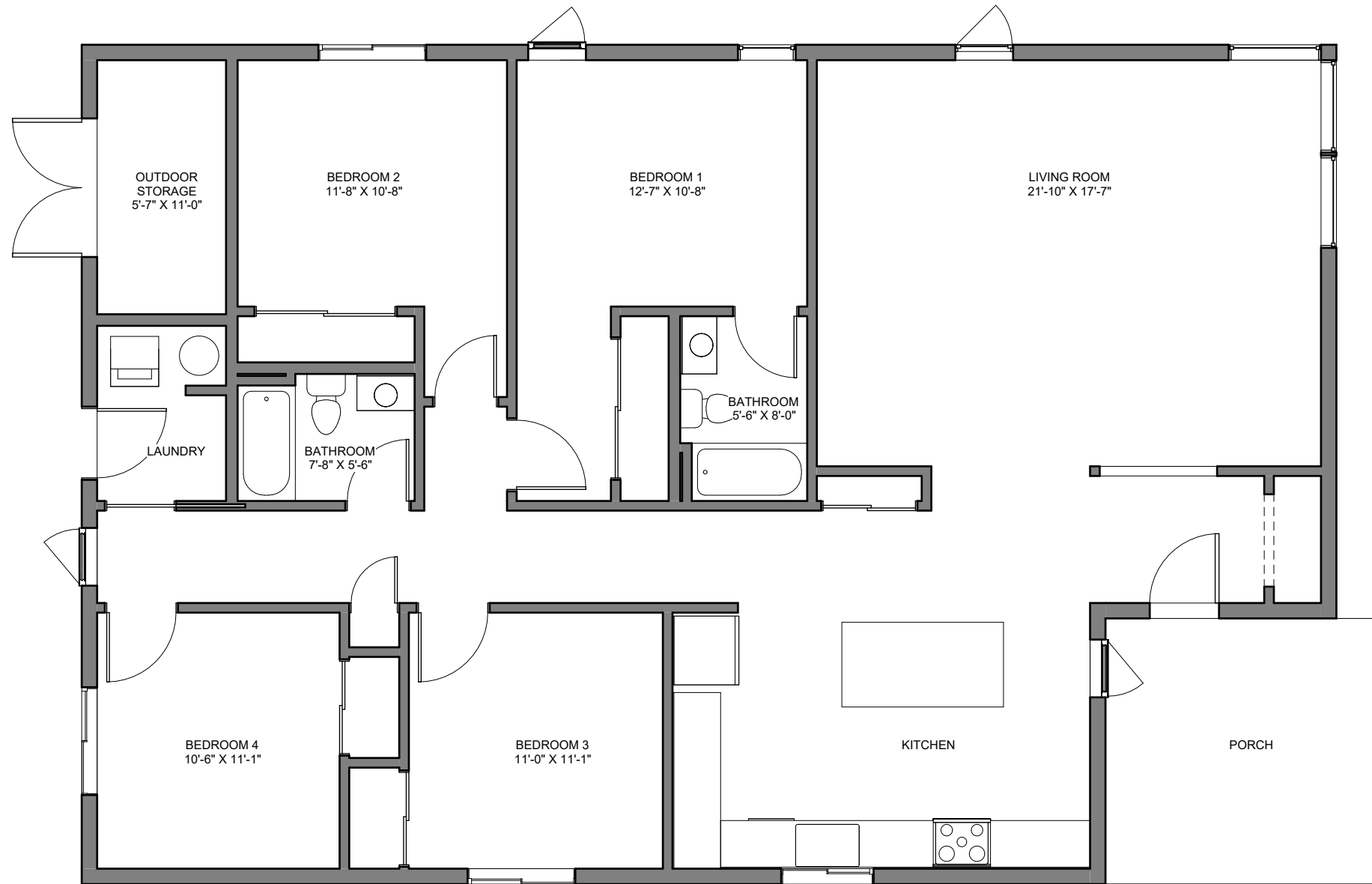
Preferred Scheme

- 16 Total Units
- All Front Doors off Existing Streets
- All Parking off New Alleys



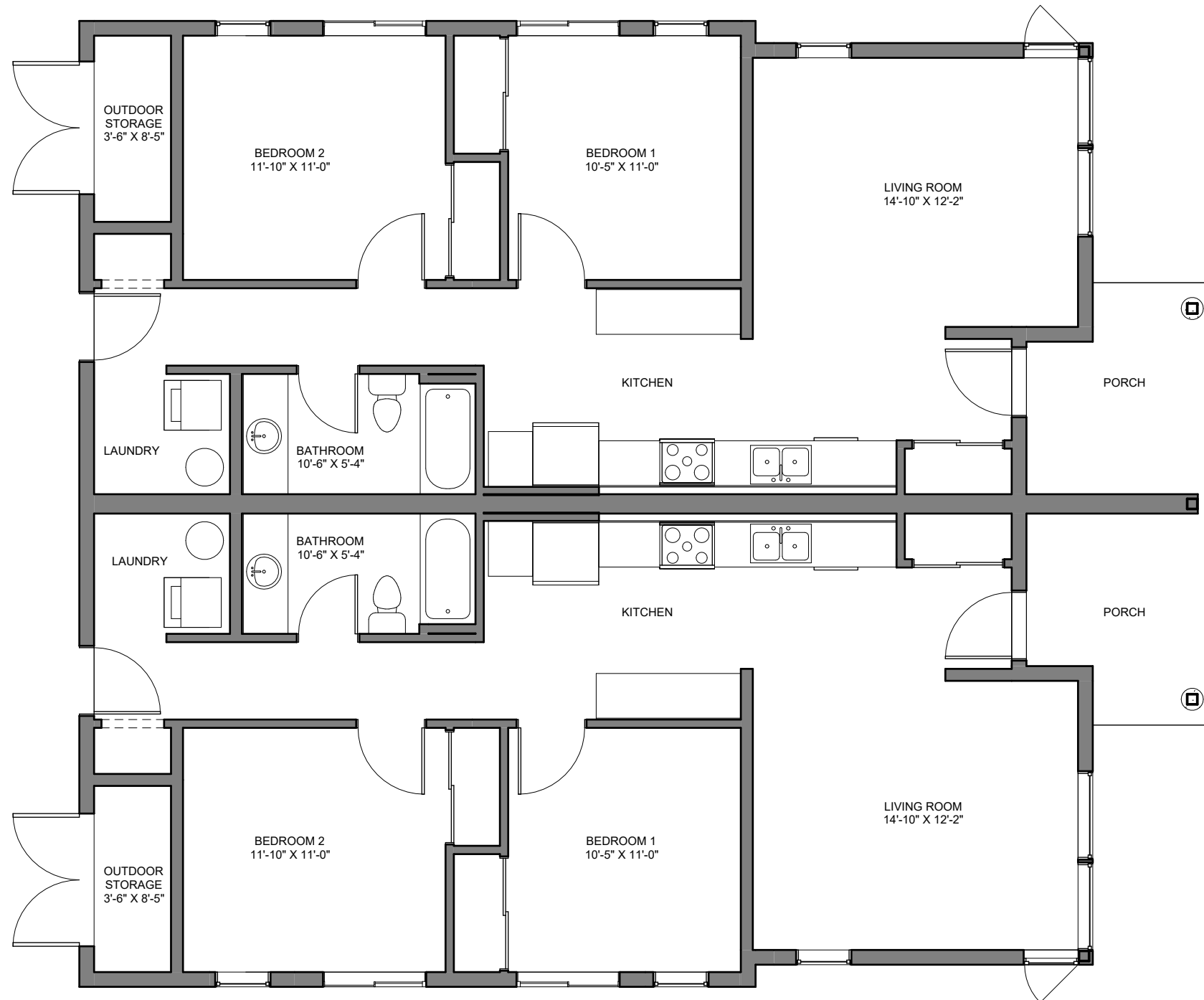
4 Bedroom Plan

- 1,670 Net SF
- 2 Full Bath
- Outdoor Storage
- 3-Car Carport (not shown)



2 x 2 Bedroom Duplex Plan

- 853 Net SF
- 1 Full Bath
- Outdoor Storage
- 2-Car Carport (each, not shown)





 **Habitat**
for Humanity®
Seattle-King & Kittitas Counties

MAPD MANASTASH ARCHITECTURE
PLANNING & DEVELOPMENT